

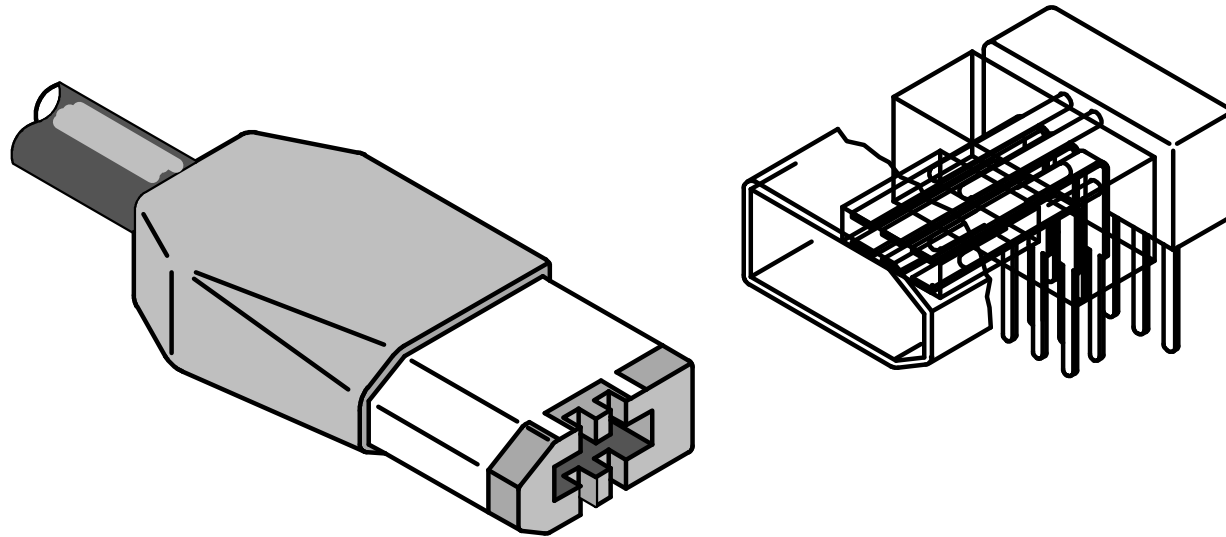
An idea for 1394b cable detection

4/30/98
Kyozo Saito
Tohoku Alps Co., Ltd.
kyozo_s@gw3.alps.co.jp

By the way, who is Alps?

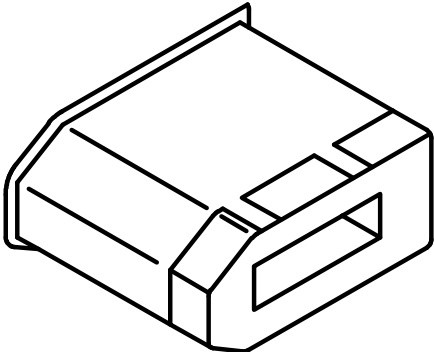
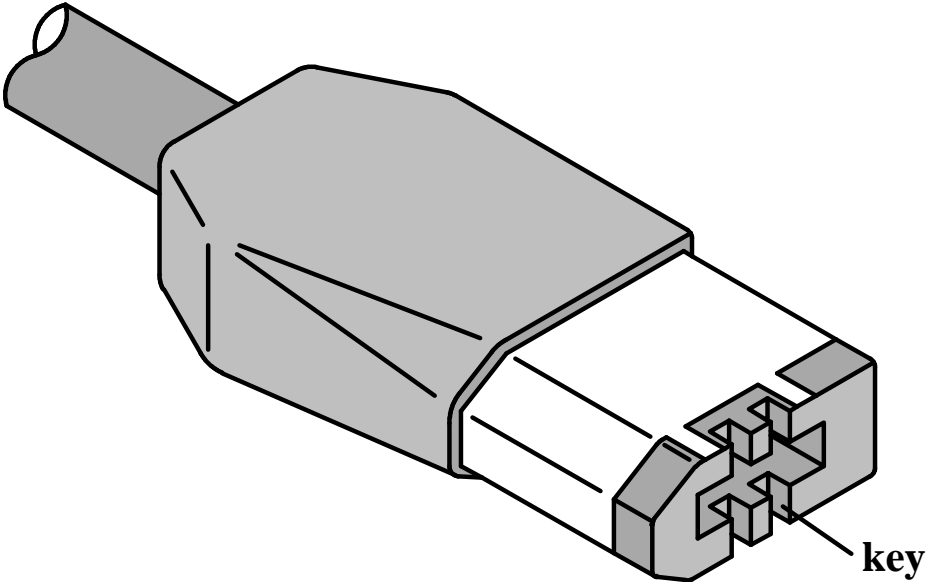
- Manufacturer of electronics components
(switches, potentiometers, ..., KBDs, mice, printers)**
- Established in 1948**
- \$4B Sales WW ('97)**
- 30 manufacturing sites in 10 countries**
- ISO9001 & 14000 Conformable**
- Parent of Alpine**

Keyed plug and detection switch

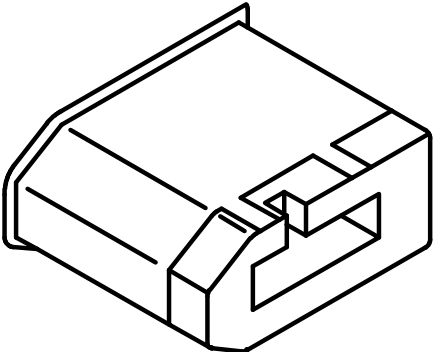


IEEE1394b Plug

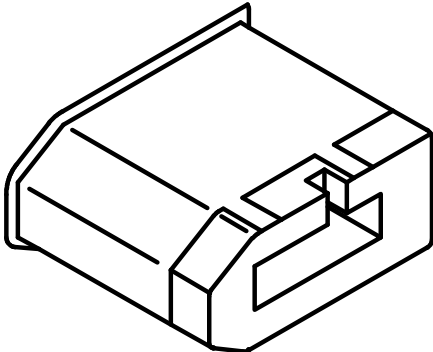
ALPS
April 30, 1998



- 400Mbps (1995)



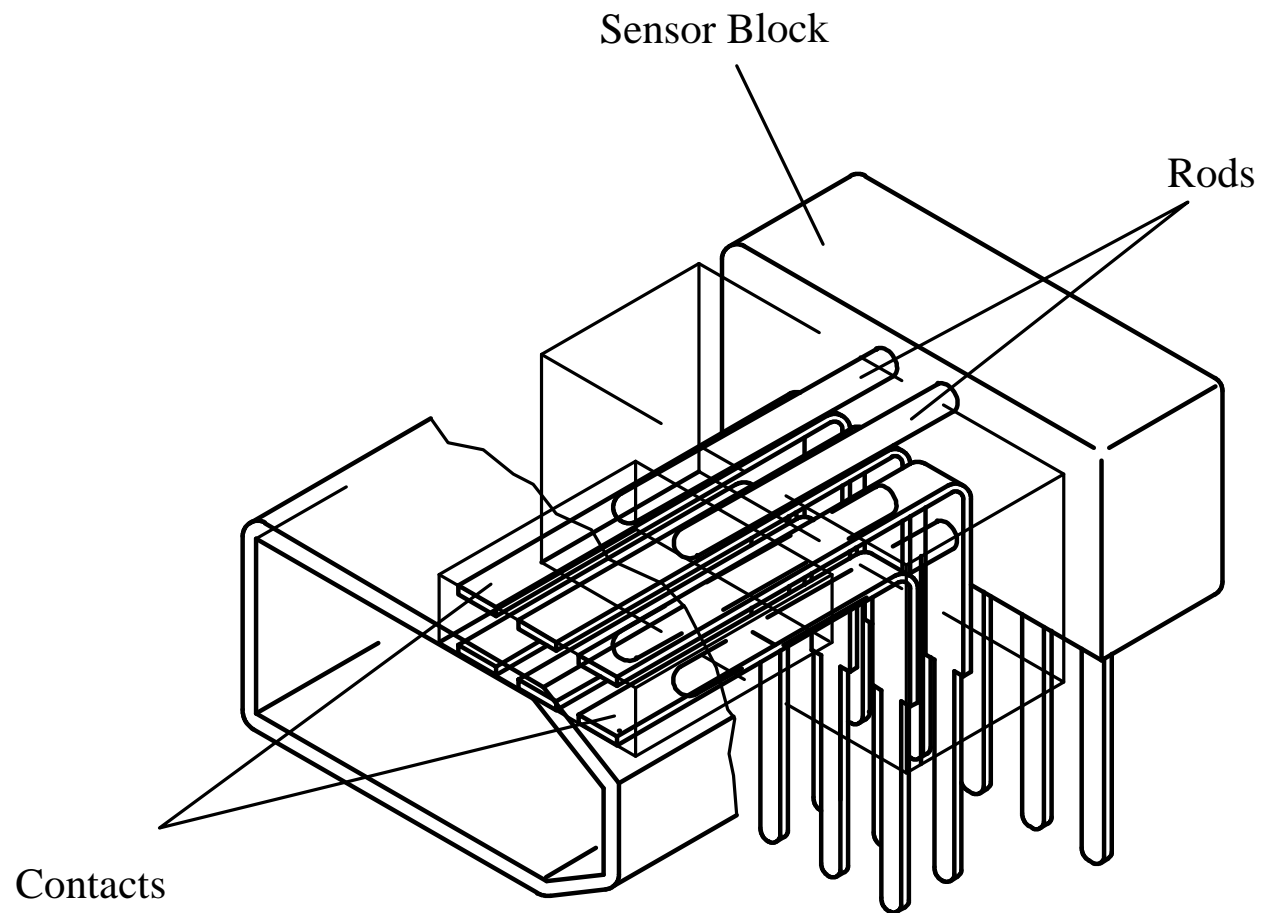
- 800Mbps



- 1600Mbps

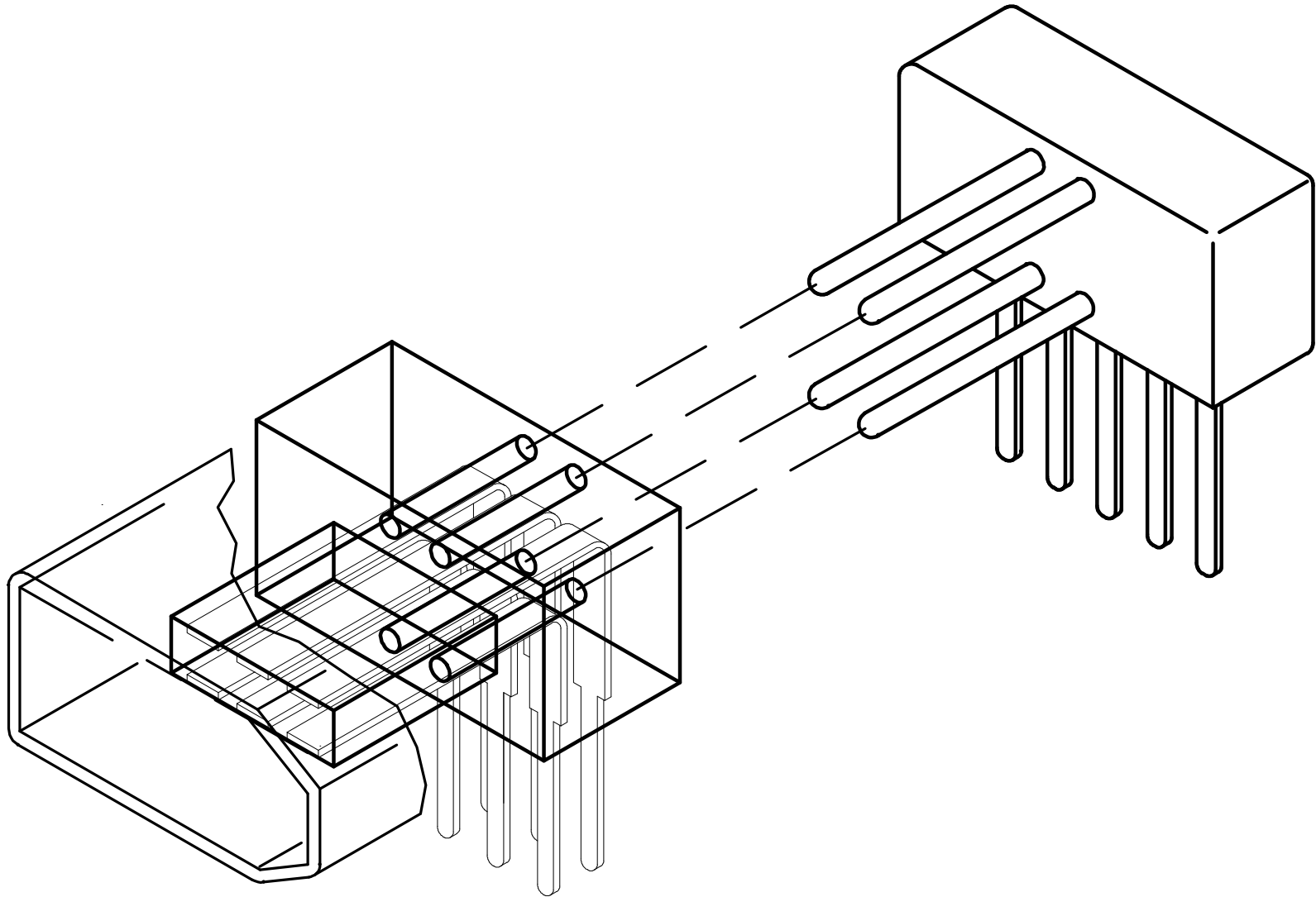
IEEE1394b Receptacle

ALPS
April 30, 1998



IEEE1394b Receptacle

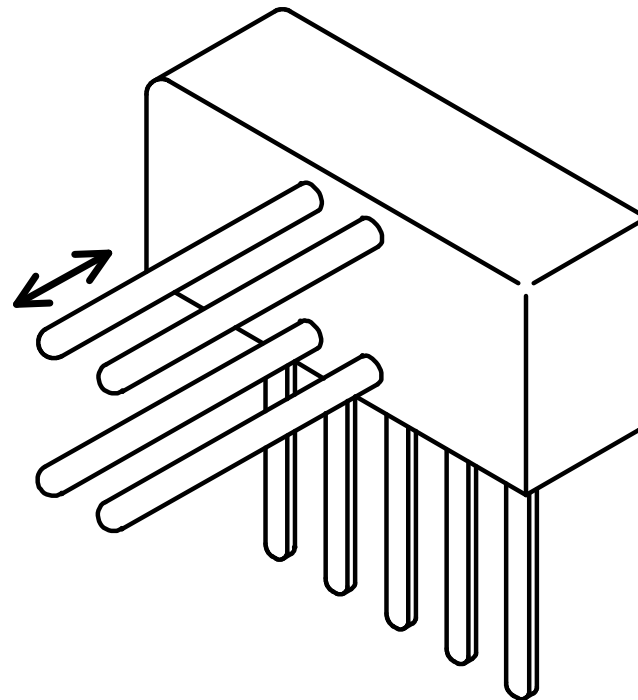
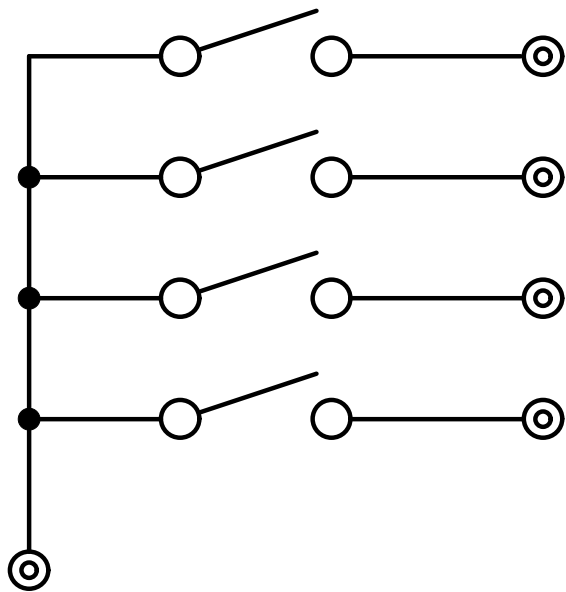
ALPS
April 30, 1998



Detection switch

ALPS
April 30, 1998

PUSH ON or PUSH OFF

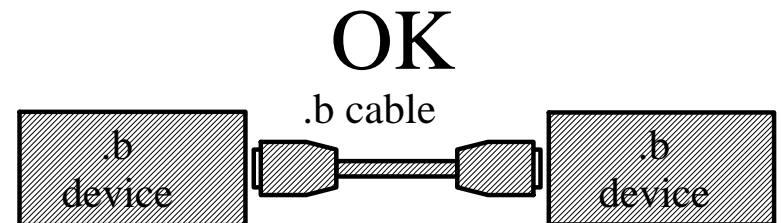
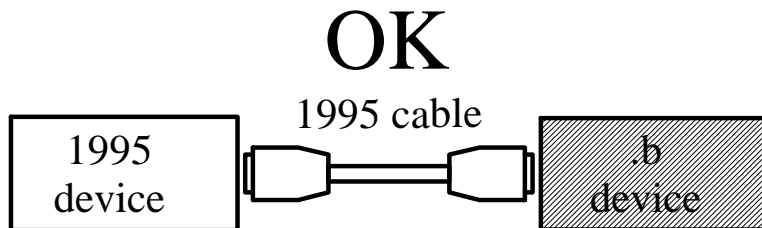
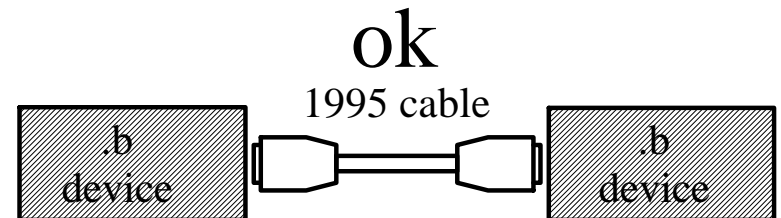
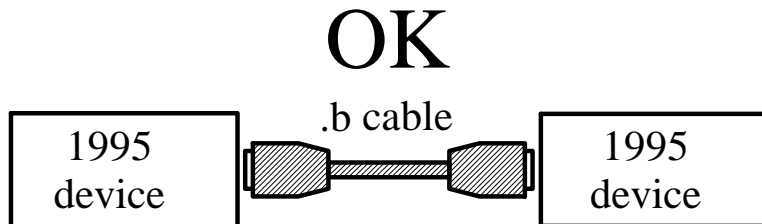
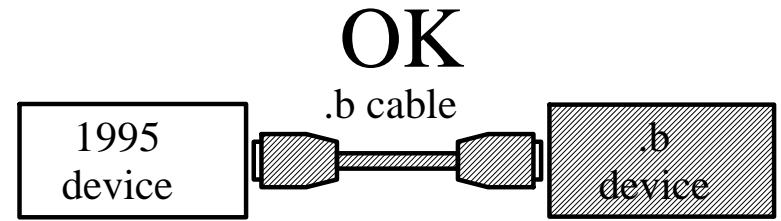
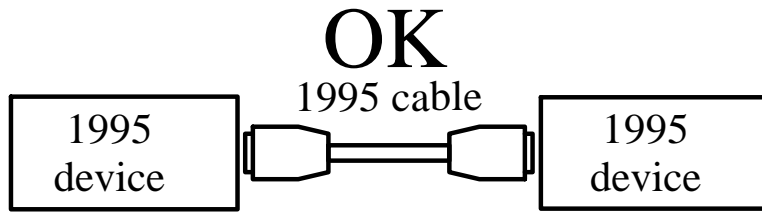


Advantages

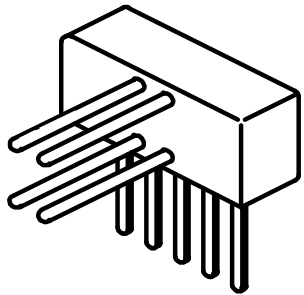
- Full backward compatible**
- Semi forward compatible**
- Less market confusion**
- Proven technology**
- Less investment**
- Fail safe**

Compatibility

ALPS
April 30, 1998

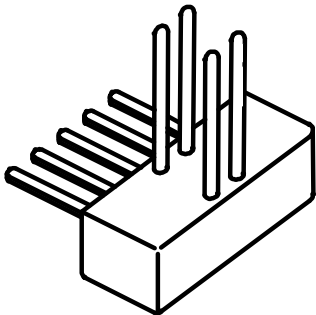


Proven technology



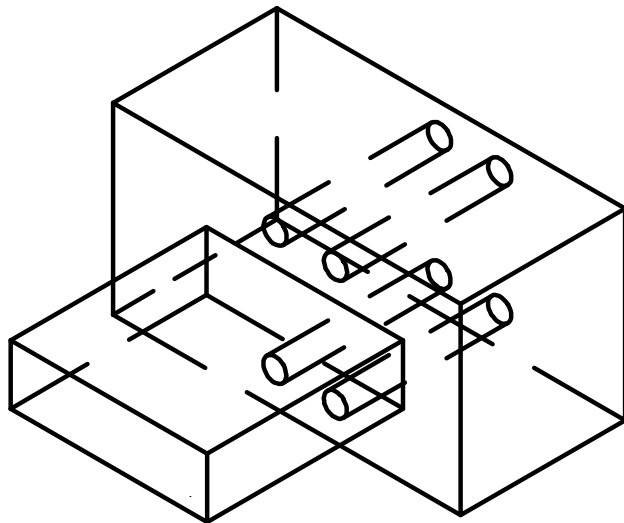
Similar switches are being used for;

- Floppy drives
- Compact cassette players
- Mini Disk players
- DVC
- DAT

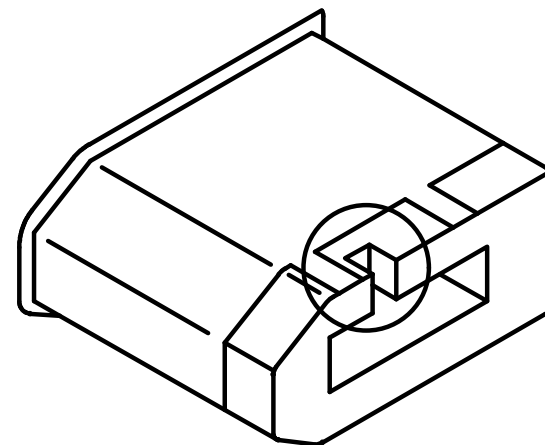


Less investment

through holes and keys are enough



mold inside receptacle



plug

Fail safe

The .b device regards the cable as 1995 then uses lower speed

