

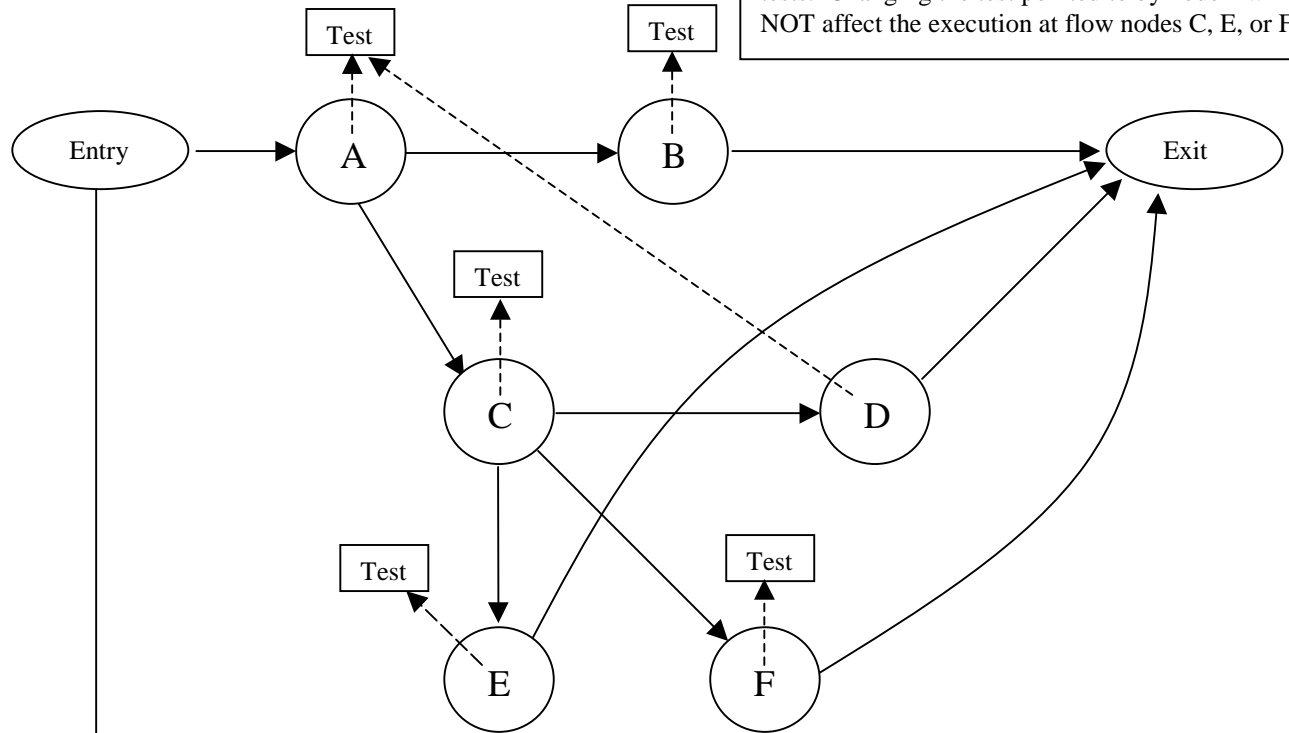
<sup>1</sup> Pre-actions are carried out in "Actions on Entry" bubbles; post-actions are carried out in one of the "Actions on Pass", "Actions on Fail", or "Actions on <tagN>" bubbles.

<sup>2</sup> Each *Method Test* and *FlowNode* contains a pre-action section. One of the actions on *Entry* can be to bypass the test. The decision to bypass or not is controlled by (bool\_expr). If (bool\_expr) is FALSE, the test is executed. If (bool\_expr) is TRUE, the test is bypassed and no post-actions are executed. For *MethodTest*, there is only one exit port, so the *NoPostActionExit* statement does not need to select the exit port. For *FlowNode*, there are N exit ports (each of which has a <condition\_name> tag), so the *NoPostActionExit* statement also includes a <condition\_name>, which specifies the exit port from which to exit.

<sup>3</sup> May represent any test method:  
Testblock default method = traverse testflow nodes and file (execute) tests

<sup>4</sup> In the STIL syntax (syntax.asc), the arbiter is the *Condition* <bool\_expr> statement in the FlowNode Port Exit block.

## Directed Graph of Testflow nodes



Flow nodes A and D point to the same test.  
Changing that test will affect execution at both flow nodes.  
Flow nodes B, C, E, and F each point to separate tests. Changing the test pointed to by node B will NOT affect the execution at flow nodes C, E, or F

Directed graph is inside test block

Method Test

Method Group

Method Flow

Inheritance