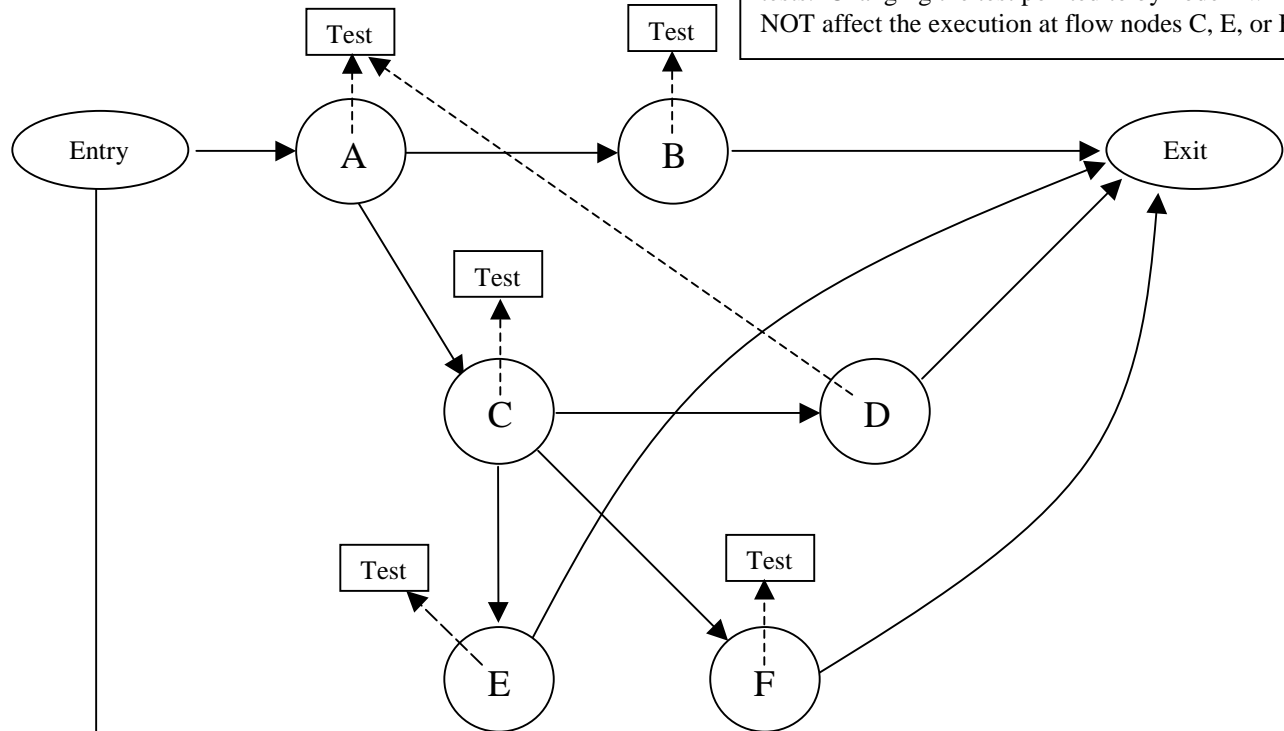


<sup>1</sup> Each test flow node and test contains a pre-action section. One of the pre-actions can be to bypass the test. The decision to bypass or not is controlled by (Logic Expr). If (Logic Expr) is not present, the test is executed. If (Logic Expr) is present and == FALSE, the test is executed. If (Logic Expr) is present and == TRUE, the test is bypassed.

<sup>2</sup> May represent any test method:  
Testblock default method = traverse testflow nodes and file (execute) tests

## Directed Graph of Testflow nodes

Flow nodes A and D point to the same test.  
Changing that test will affect execution at both flow nodes.  
Flow nodes B, C, E, and F each point to separate tests. Changing the test pointed to by node B will NOT affect the execution at flow nodes C, E, or F



Directed graph is inside test block

