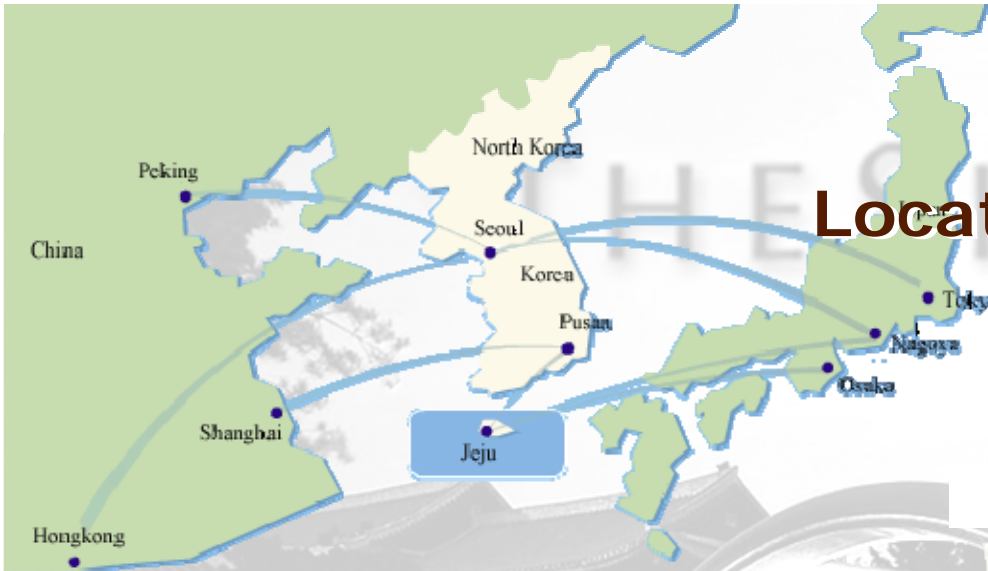


IEEE802.1 and 802.3 joint meeting proposal

September 17th ~20th, 2007

- **Period**
 - September 17th ~ 20th, 2007
 - Not available: Week of 24th (Korean Thanks Giving Holidays)
- **Locations**
 - Hotel Shilla, Seoul
- **Cost**
 - Room rate: US\$200 (Breakfast included)
 - Registration Fee: US\$400 (4 Lunches and one social included)
- **Sponsor**
 - Samsung Electronics, ETRI, and TTA
- **Contact: Geoffrey M. Garner (IEEE802.1AS editor)**
Hyunsurk(Eric) Ryu (eric_ryu@samsung.com)

Location



At the center of Seoul



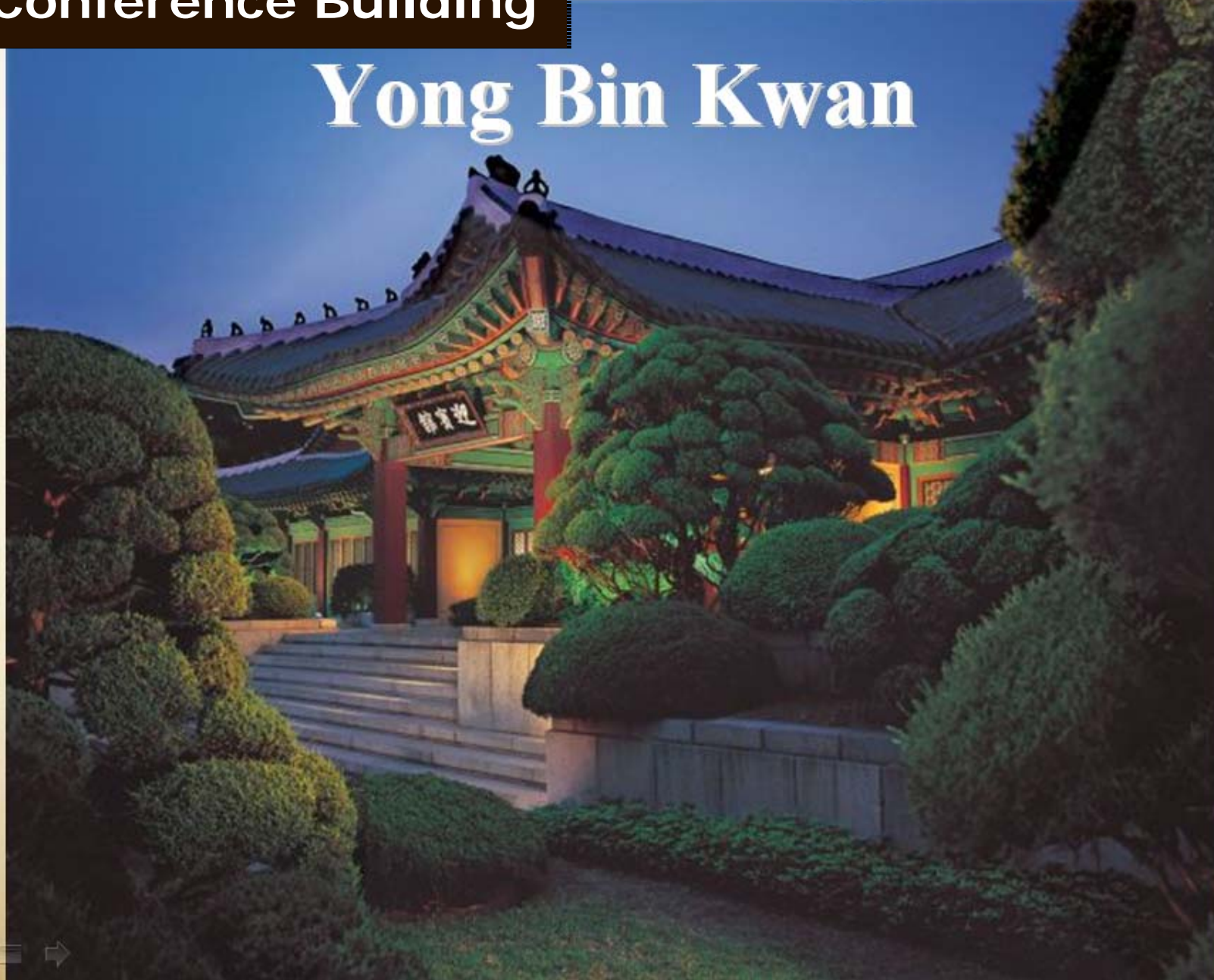
Distance and time to Major Urban Area

Major Areas	Distance	Time (minutes)	Traffic Means
Incheon International Airport	68 km	Approx. 60	Car
Gimpo Airport	30 km	Approx. 40	Car
Trade Center (Samseong-dong)	15 km	Approx. 30	Car
Financial Street in Yeouido	15 km	Approx. 30	Car
Downtown	7 km	Approx. 10	Subway
Shopping Streets in Itaewon	4 km	Approx. 10	Car
Shopping Streets in Apgujeong	6 km	Approx. 10	Subway
Seoul Railway Station	7 km	Approx. 10	Subway

Conference Building

THE SHILLA

Yong Bin Kwan



Conference rooms for main meetings

THE SHILLA



THE SHILLA

Conference rooms for small group

Executive Conference Center

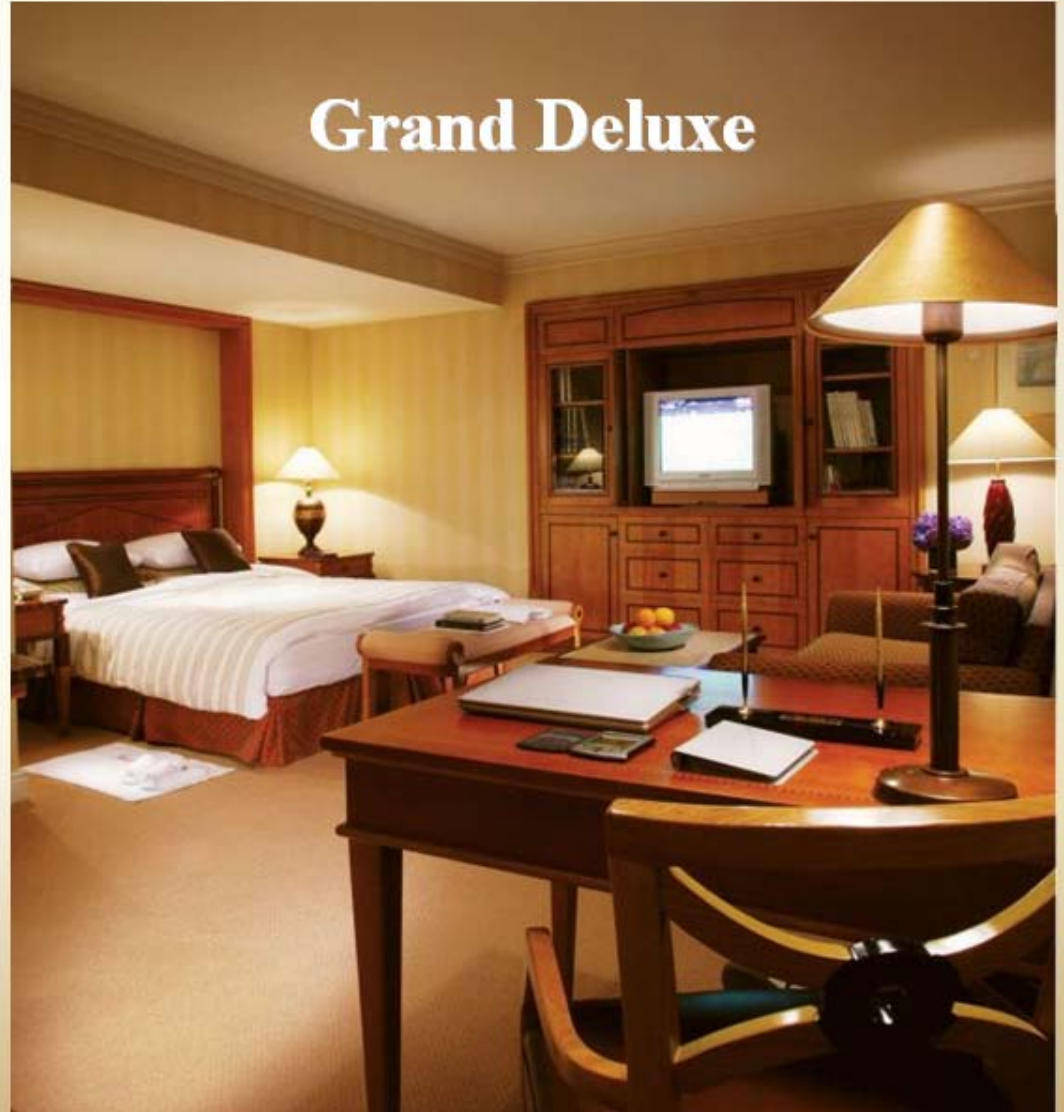


Guest Rooms

Deluxe



Grand Deluxe



Restaurants

