

Project	IEEE 802.16 Broadband Wireless Access Working Group < <a href="http://ieee802.org/16">http://ieee802.org/16</a> >	
Title	MS Initial Ranging with Non-transparent RS	
Date	2006-01-08	
Submitted		
Source(s)	<p>Kanchei (Ken) Loa, Yung-Ting Lee,          Yi-Hsueh Tsai, Heng-Iang Hsu,          Chih-Chiang Hsieh, Shiann-Tsong Sheu,          Frank C.D. Tsai, Youn-Tai Lee,          Hua-Chiang Yin,          Institute for Information Industry          8F., No. 218, Sec. 2, Dunhua S. Rd.,          Taipei City, Taiwan.</p>	<p>Voice: +886-2-2739-9616  <a href="mailto:loa@iii.org.tw">loa@iii.org.tw</a></p>
	<p>Hang Zhang, Peiyong Zhu, Mo-Han          Fong, Wen Tong, David Steer, Gamini          Senarath, Derek Yu, Mark Naden, G.Q.          Wang          Nortel          3500 Carling Avenue          Ottawa, Ontario K2H 8E9</p>	<p>Voice: +1 613 7631315  <a href="mailto:WenTong@nortel.com">WenTong@nortel.com</a>  <a href="mailto:pyzhu@nortel.com">pyzhu@nortel.com</a></p>
	<p>Yu Ge, Peng-Yong Kong, Chen-Khong          Tham          21 Heng Mui Keng Terrace          Singapore 119613</p>	<p>Voice: +65-6874.1950          Fax: +65-6775.5014  <a href="mailto:geyu@i2r.a-star.edu.sg">geyu@i2r.a-star.edu.sg</a></p>
	[add co-authors here]	
Re:	IEEE 802.16j-06/034: "Call for Technical Proposals regarding IEEE Project P802.16j"	
Abstract	This contribution proposes procedures for MS initial ranging with non-transparent RS	
Purpose	Text proposal for 802.16j Baseline Document	
Notice	This document has been prepared to assist IEEE 802.16. It is offered as a basis for discussion and is not binding on the contributing individual(s) or organization(s). The material in this document is subject to change in form and content after further study. The contributor(s) reserve(s) the right to add, amend or withdraw material contained herein.	
Release	The contributor grants a free, irrevocable license to the IEEE to incorporate material contained in this contribution, and any modifications thereof, in the creation of an IEEE Standards publication; to copyright in the IEEE's name any IEEE Standards publication even though it	

---

may include portions of this contribution; and at the IEEE's sole discretion to permit others to reproduce in whole or in part the resulting IEEE Standards publication. The contributor also acknowledges and accepts that this contribution may be made public by IEEE 802.16.

---

Patent Policy and Procedures	<p>The contributor is familiar with the IEEE 802.16 Patent Policy and Procedures &lt;<a href="http://ieee802.org/16/ipr/patents/policy.html">http://ieee802.org/16/ipr/patents/policy.html</a>&gt;, including the statement "IEEE standards may include the known use of patent(s), including patent applications, provided the IEEE receives assurance from the patent holder or applicant with respect to patents essential for compliance with both mandatory and optional portions of the standard." Early disclosure to the Working Group of patent information that might be relevant to the standard is essential to reduce the possibility for delays in the development process and increase the likelihood that the draft publication will be approved for publication. Please notify the Chair &lt;<a href="mailto:chair@wirelessman.org">mailto:chair@wirelessman.org</a>&gt; as early as possible, in written or electronic form, if patented technology (or technology under patent application) might be incorporated into a draft standard being developed within the IEEE 802.16 Working Group. The Chair will disclose this notification via the IEEE 802.16 web site &lt;<a href="http://ieee802.org/16/ipr/patents/notices">http://ieee802.org/16/ipr/patents/notices</a>&gt;.</p>
------------------------------------	--

---

# MS Initial Ranging with Non-transparent RS

## Introduction

This contribution describes MS initial ranging with non-transparent RS under centralized scheduling scheme. In order to facilitate the incorporation of this proposal into IEEE 802.16j standard, specific changes to the baseline working document IEEE 802.16j-06/026r1 are listed below.

## Text Proposal

### 6.3.9.16 Support for network entry and initialization in relay mode

#### 6.3.9.16.2 MS network entry procedures in non-transparent RS systems

In MS network entry procedures in non-transparent RS systems, MS scans for downlink channel and establishes synchronization with the non-transparent RS, then obtains transmission parameters from UCD message as described in 6.3.9.1 through 6.3.9.4.

The initial ranging process shall begin by sending an initial-ranging CDMA ranging code on the UL allocation dedicated for that purpose (for more details see 6.3.10.3).

### 6.3.10.3 OFDMA based ranging

#### 6.3.10.3.4 Relaying support for OFDMA based ranging

##### 6.3.10.3.4.2 MS initial ranging and automatic adjustments with non-transparent RS

When RS receives the CDMA ranging code, it shall send RNG\_RSP message to MS on the access link.

After RS received a CDMA ranging code resulting in continue status, it may transmit an RLY\_RC-REP message to the serving MR-BS through the relay path. Once RS receives a CDMA ranging code resulting in success status, it shall transmit RLY\_RC-REP message to the serving MR-BS through the relay path. The RLY\_RC-REP message is defined in xxx. When RS receives multiple CDMA ranging codes in the ranging subchannel of a frame, the RLY\_RC-REP message sent by the RS to serving MR-BS may contain information of multiple received codes.

Upon receiving RLY\_RC-REP message from a subordinate RS, the MR-BS may send an RLY-BST message to the RS via the relay path. The RLY-BST message is defined in xxx. Afterward, the RS should construct RNG-RSP from received RLY-BST message and send it to the corresponding MS. Once the MR-BS receives RLY\_RC-REP with success status, the RLY-BST sent to the RS may also contain the information about anonymous bandwidth allocation, original ranging code, and ranging slot.

Upon receiving an RNG-REQ message with the initial ranging CID from MS, the RS shall send a RLY\_CA-REP message containing the RNG-REQ message to the serving MR-BS through the relay path. The RLY\_CA-REP is defined in xxx.

Once the MR-BS receives the RLY\_CA-REP containing RNG-REQ message with initial ranging CID, the MR-BS shall assign Basic and Primary management CIDs to the correspondent MS, and transmit an RLY-BST message containing those necessary information to the RS. Afterward, the RS shall send RNG-RSP with the

initial ranging CID to the MS based on the received RLY-BST message.

After assigning the basic and primary management CID to an MS, the MS and MR-BS shall continue network entry process as described in the 6.3.9.7 through 6.3.9.13 using MS's management CIDs. The RS shall relay management messages between them.

The message sequence charts (Table xxx and Table yyy) and flow charts (Figure xxx, Figure yyy, and Figure zzz) define the ranging and adjustment process that shall be followed by compliant RSs and MR-BSs. For CDMA ranging process between RS and MS, details are defined in 6.3.10.3.

Table xxx – RLY-BST message format

<u>Syntax</u>	<u>Size</u>	<u>Notes</u>
<u>RLY-BST Message Format(){</u>		
<u>Management Message Type = xx</u>	<u>8 bits</u>	
<u>Encoded Information</u>	<u>variable</u>	<u>TBD</u>
<u>}</u>		

Table xxx – RLY\_RC-REP message format

<u>Syntax</u>	<u>Size</u>	<u>Notes</u>
<u>RLY_RC-REP Message Format(){</u>		
<u>Management Message Type = xx</u>	<u>8 bits</u>	
<u>TLV Encoded Information</u>	<u>variable</u>	<u>TLV specific</u>
<u>}</u>		

Table xxx – RLY\_RC-REP message encodings

	<u>Type</u> <u>(1 byte)</u>	<u>Length</u>	<u>Value</u> <u>(Variable-length)</u>	<u>PHY</u> <u>Scope</u>
<u>Timing Adjust</u>	<u>TBA</u>	<u>4</u>	<u>Tx timing offset adjustment (signed 32-bit). The amount of time required to adjust MS transmission so the bursts will arrive at the expected time instance at the RS. Units are PHY specific (see 10.3). The SS shall advance its burst transmission time if the value is negative and delay its burst transmission if the value is positive.</u>	<u>OFDMA</u>
<u>Power Level Adjust</u>	<u>TBA</u>	<u>1</u>	<u>Tx Power offset adjustment (signed 8-bit, 0.25 dB units). Specifies the relative change in transmission power level that the MS is to make in order that transmissions arrive at the RS at the desired power. When subchannelization is employed, the subscriber shall interpret the power offset adjustment as a required change to the transmitted power density.</u>	<u>OFDMA</u>
<u>Offset Frequency Adjust</u>	<u>TBA</u>	<u>4</u>	<u>Tx frequency offset adjustment (signed 32-bit, Hz units). Specifies the relative change in transmission</u>	<u>OFDMA</u>

			<u>frequency that the MS is to make in order to better match the RS. (This is fine-frequency adjustment within a channel, not reassignment to a different channel.). The MS shall increase its transmit frequency if the value is positive and decrease its transmit frequency if the value is negative.</u>	
<u>Ranging Status</u>	<u>TBA</u>	<u>1</u>	<u>Used to indicate whether uplink messages are received within acceptable limits by RS.</u> <u>1 = continue, 2 = abort, 3 = success</u>	<u>OFDMA</u>
<u>Received Ranging Code Attributes</u>	<u>TBA</u>	<u>4</u>	<u>Bits 31:22 – Used to indicate the OFDM time symbol reference that was used to transmit the ranging code.</u> <u>Bits 21:16 – Used to indicate the OFDMA subchannel reference that was used to transmit the ranging code.</u> <u>Bits 15:8 – Used to indicate the ranging code index that was sent by the MS.</u> <u>Bits 7:0 – The 8 least significant bits of the frame number of the OFDMA frame where the MS sent the ranging code.</u>	<u>OFDMA</u>

Table xxx: Ranging and automatic adjustment procedure in non-transparent RS systems (Conventional)

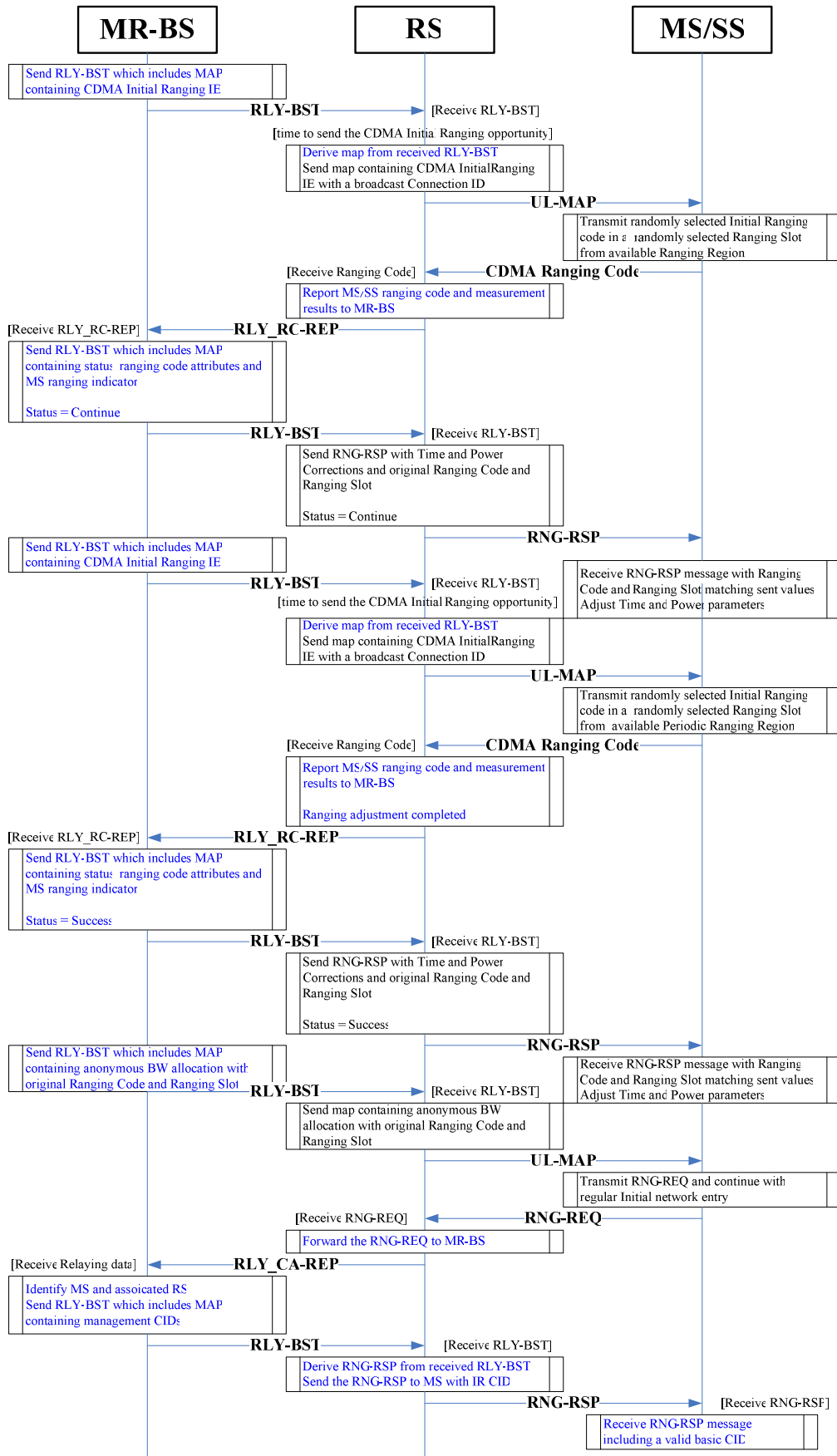
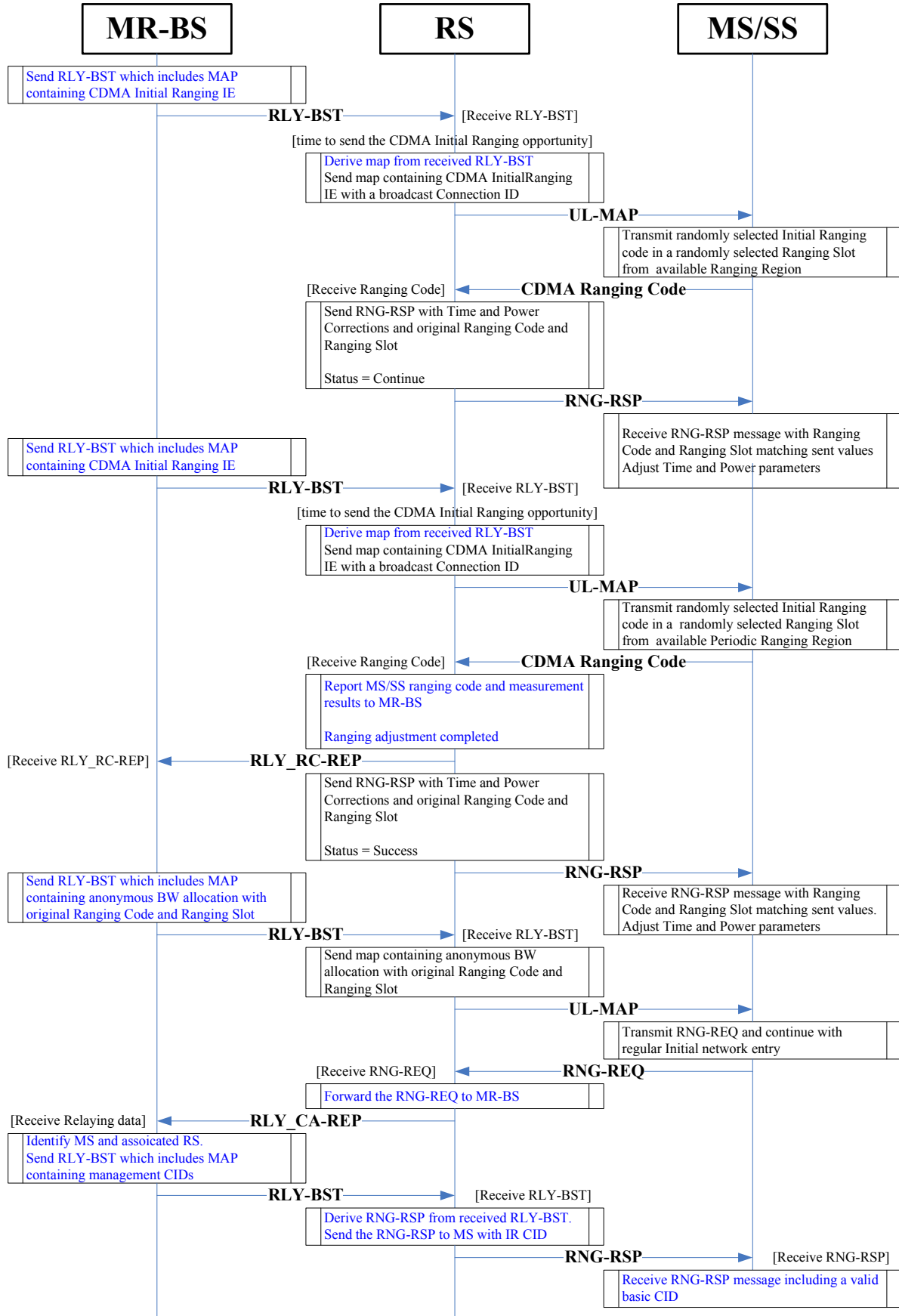


Table yyy: Ranging and automatic adjustment procedure in non-transparent RS systems (RS-assisted)



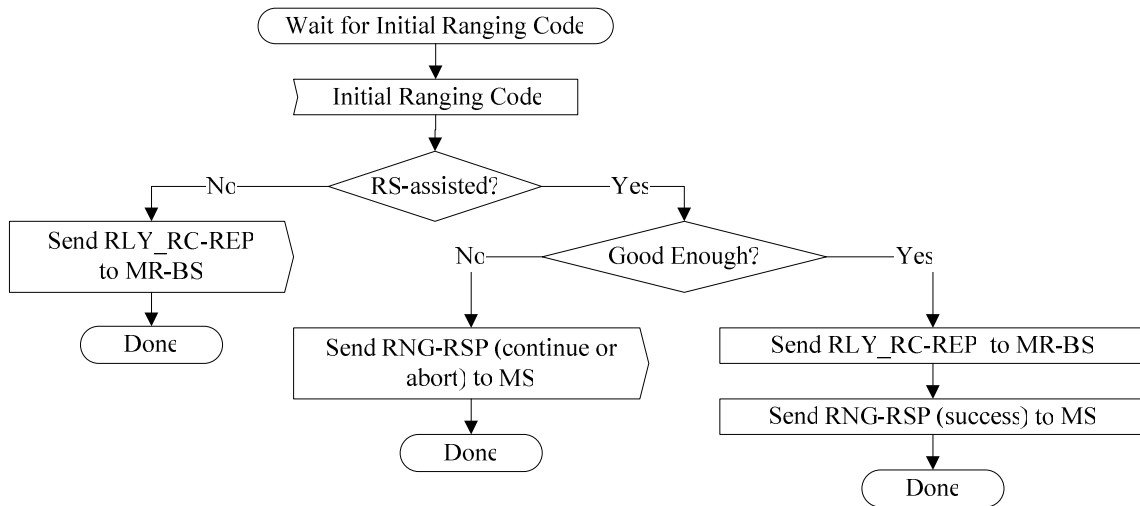


Figure xxx MS CDMA Initial Ranging – Non-transparent Access RS (part 1)

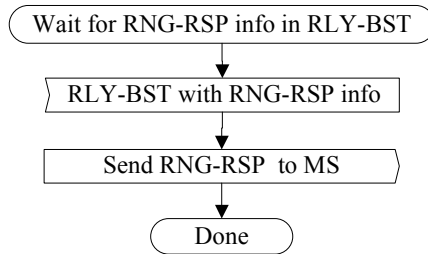


Figure xxx MS CDMA Initial Ranging – Non-transparent Access RS (part 2)

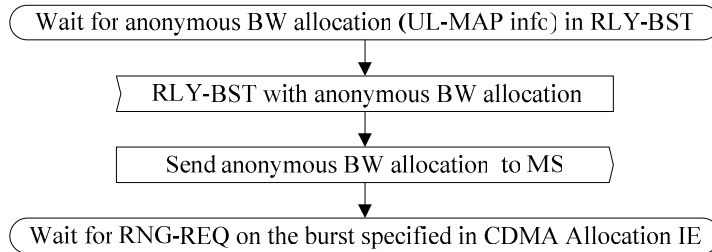


Figure xxx MS CDMA Initial Ranging – Non-transparent Access RS (part 3)

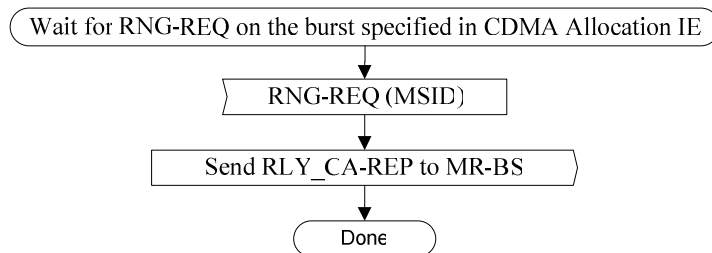


Figure yyy MS Initial Ranging – Non-transparent Access RS (part 1)

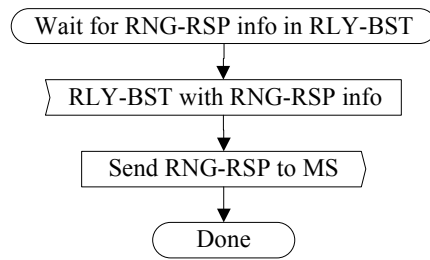


Figure yyy MS Initial Ranging – Non-transparent Access RS (part 2)

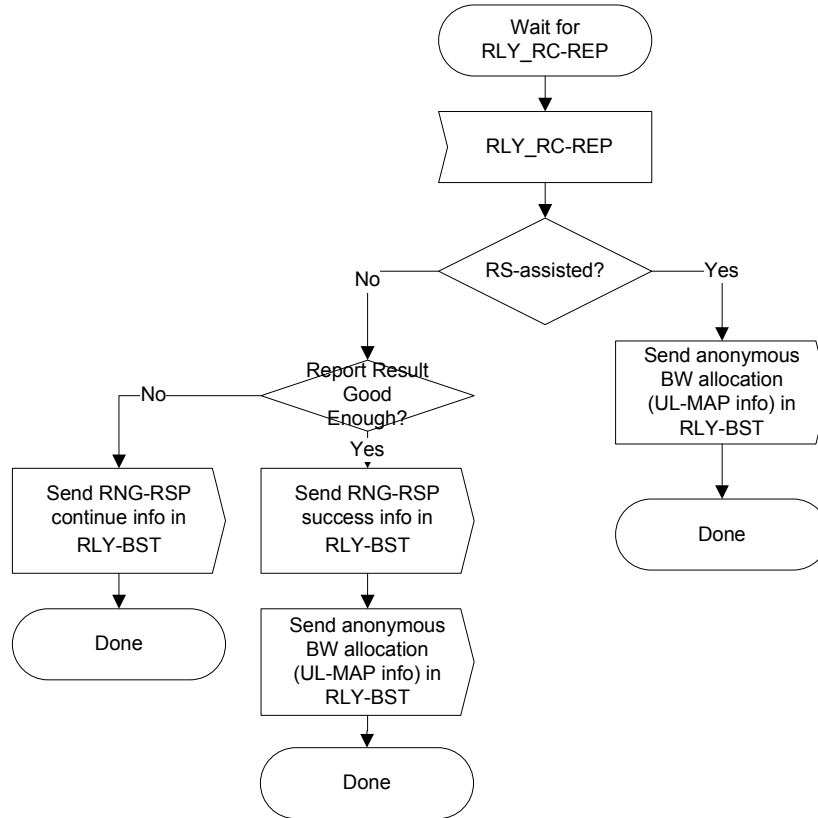


Figure zzz MS CDMA Initial Ranging with Non-transparent RS- MR-BS

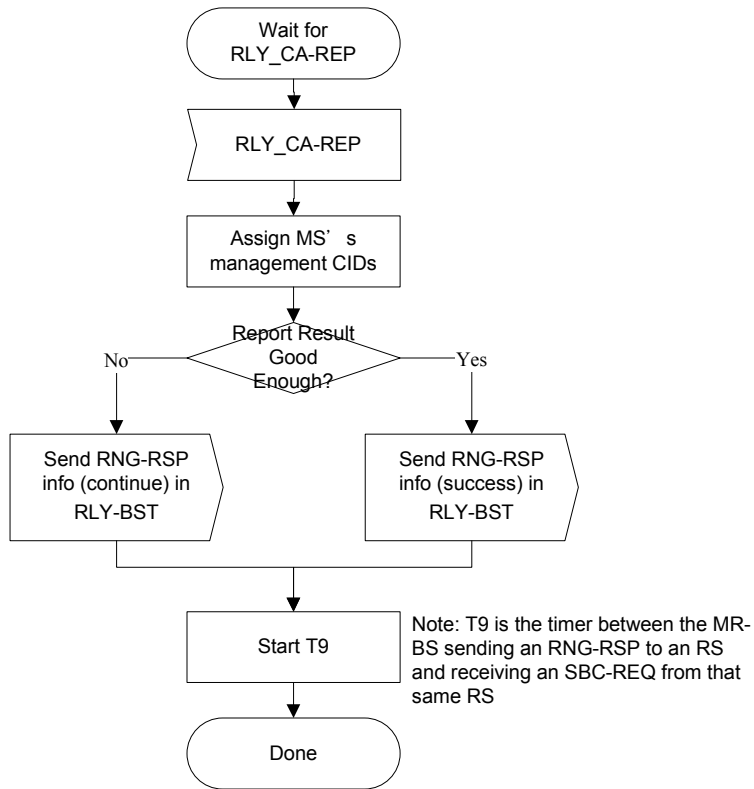


Figure zzz MS Initial Ranging with Non-transparent RS– MR-BS