

Project	IEEE 802.16 Broadband Wireless Access Working Group < http://ieee802.org/16 >	
Title	Coverage/Capacity simulations for OFDMA PHY in ITU-T channel model including MRC, STC, AAS results	
Date Submitted	2004-11-16	
Source(s)	Yigal Leiba Yossi Segal Zion Hadad Itzik Kitroser Runcom Ltd. Hachoma 2 St. 75655 Rishon Lezion, Israel	Voice: +972-3-9528440 Fax: +972-3-9528805 yigall@runcom.co.il yosis@runcom.co.il zionh@runcom.co.il Itzikk@runcom.co.il
Re:	Task Group Review of IEEE 802.16e-03/07r5	
Abstract	OFDMA PHY performance and coverage simulations	
Purpose	Demonstrate performance of the OFDMA PHY in real coverage scenarios	
Notice	This document has been prepared to assist IEEE 802.16. It is offered as a basis for discussion and is not binding on the contributing individual(s) or organization(s). The material in this document is subject to change in form and content after further study. The contributor(s) reserve(s) the right to add, amend or withdraw material contained herein.	
Release	The contributor grants a free, irrevocable license to the IEEE to incorporate material contained in this contribution, and any modifications thereof, in the creation of an IEEE Standards publication; to copyright in the IEEE's name any IEEE Standards publication even though it may include portions of this contribution; and at the IEEE's sole discretion to permit others to reproduce in whole or in part the resulting IEEE Standards publication. The contributor also acknowledges and accepts that this contribution may be made public by IEEE 802.16.	
Patent Policy and Procedures	<p>The contributor is familiar with the IEEE 802.16 Patent Policy and Procedures (Version 1.0) <http://ieee802.org/16/ipr/patents/policy.html>, including the statement "IEEE standards may include the known use of patent(s), including patent applications, if there is technical justification in the opinion of the standards-developing committee and provided the IEEE receives assurance from the patent holder that it will license applicants under reasonable terms and conditions for the purpose of implementing the standard."</p> <p>Early disclosure to the Working Group of patent information that might be relevant to the standard is essential to reduce the possibility for delays in the development process and increase the likelihood that the draft publication will be approved for publication. Please notify the Chair <mailto:r.b.marks@ieee.org> as early as possible, in written or electronic form, of any patents (granted or under application) that may cover technology that is under consideration by or has been approved by IEEE 802.16. The Chair will disclose this notification via the IEEE 802.16 web site <http://ieee802.org/16/ipr/patents/notices>.</p>	

Coverage/Capacity simulations for OFDMA PHY using STC, MRC, and switching AAS simulation

1 Simulated system

Coverage simulations have been prepared using the channel ITU-R recommendation M.1225 [1]. The scenario analyzed is for the channel ITU-B, which presents more severe conditions than its ITU-A counterpart, and which accounts to about 50% of the SS in the cell according to the model. The simulation has been conducted under capacity limited conditions (i.e. smaller cells than possible with the available link budget).

All simulations were done for an OFDMA system with 2K FFT and 32 sub-channels. The mobile station transmit power is limited to 20dBm. To maintain bi-directional communication the base station transmit power has been set to the mobile transmit power plus the OFDMA concentration gain. The OFDMA concentration gain is up to 15dB (excluding mini-sub-channels, which provide additional 7dB). The BS transmission power has therefore been set at 35dB. The simulations show the effect of advanced options present in the standard on the coverage and capacity of the system. The results therefore apply for the downlink channel, or for a single OFDMA uplink channel. Capacity calculations do not include overhead for preambles, guard intervals, etc.

The simulated system summary is

- ✂ 10MHz ITU-B channel at 2.5GHz (Similar results were obtained for 5MHz channel)
- ✂ Convolutional Turbo Coding FEC scheme with threshold BER of 10^{-5}
- ✂ The SS antenna is omni-directional with gain of 0dBi
- ✂ Various antennas were used for the BS. Beam-width of 60 degrees for six sectors scenario, 120 degrees for 3 sectors scenario, and 30 or 15 degrees for switching AAS simulation scenario.
- ✂ Transmit power from the BS is 35dBm
- ✂ Receiver noise-figure of 4.5dB in the BS and 6.5dB in the UT

2 PHY performance graphs and explanations about the simulation

For the PHY sensitivity curves and explanation of the way the simulation works, see [2]. Note that the coverage statistics are given over time, not over the coverage area. ARQ is NOT used in these simulations, but if it had been used it would have improved the coverage at the cost of reducing capacity.

3 Simulation Results

Results summary:

Scenario	Coverage (% of time)	Bit/Sec/Hz per cell
6 Sectors, Reuse 1/1, IEEE-802.16d ITU-B 10MHz@120KmpH, 2 TX antenna, one RX (STC) (downlink)	97.3%	4.74
6 Sectors, Reuse 1/1, IEEE-802.16d ITU-B 10MHz@120KmpH, 2x2 Antenna diversity (downlink)	100%	6.96
6 Sectors, Reuse 1/1, IEEE-802.16d ITU-B 10MHz@120KmpH, 2x2 Antenna diversity (uplink)	97%	5.34
24 Sectors, Reuse 1/1, IEEE-802.16d ITU-B 10MHz@120KmpH, Simulating AAS operation (downlink)	88.5%	18.96

Scenario: 6 Sectors, Reuse 1/1, IEEE-802.16d ITU-B
10MHz@120KmpH,
2 TX antenna, one RX (STC)

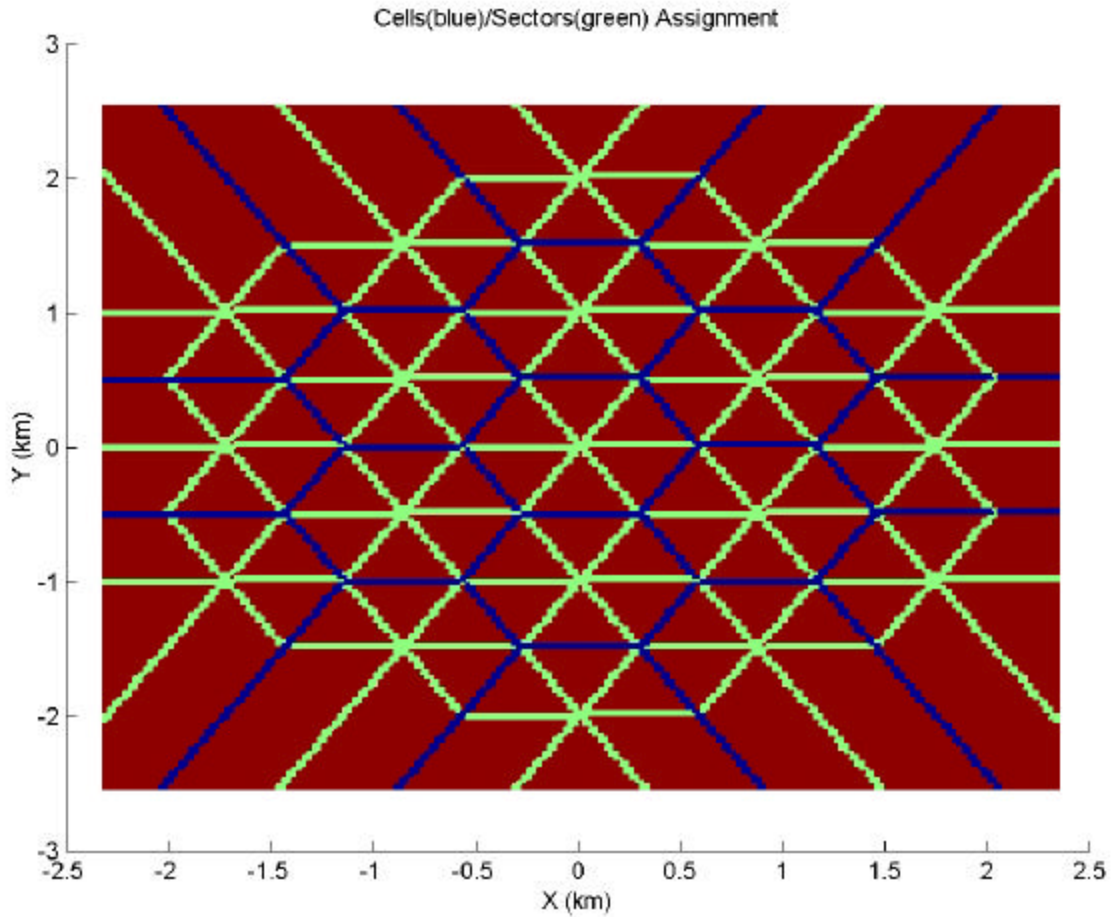


Figure 1: Cell/Sector Assignment - 6 Sectors, Reuse 1/1, IEEE-802.16d ITU-B 10MHz@120KmpH, 2 Antenna STC + 2 Antenna MRC

Coverage Statistics:

- Average DL throughput = 0.79 Bit/Sec/Hz per sector
- DL Coverage
 - **FADE - 2.70%**
 - QPSK, 1/12 - 5.06%
 - QPSK, 1/8 - 17.48%
 - QPSK, 1/4 - 33.18%
 - QPSK, 1/2 - 23.55%
 - QPSK, 3/4 - 6.74%
 - 16QAM, 1/2 - 10.48%
 - 64QAM, 1/2 - 0.80%
 - 64QAM, 2/3 - 0.00%

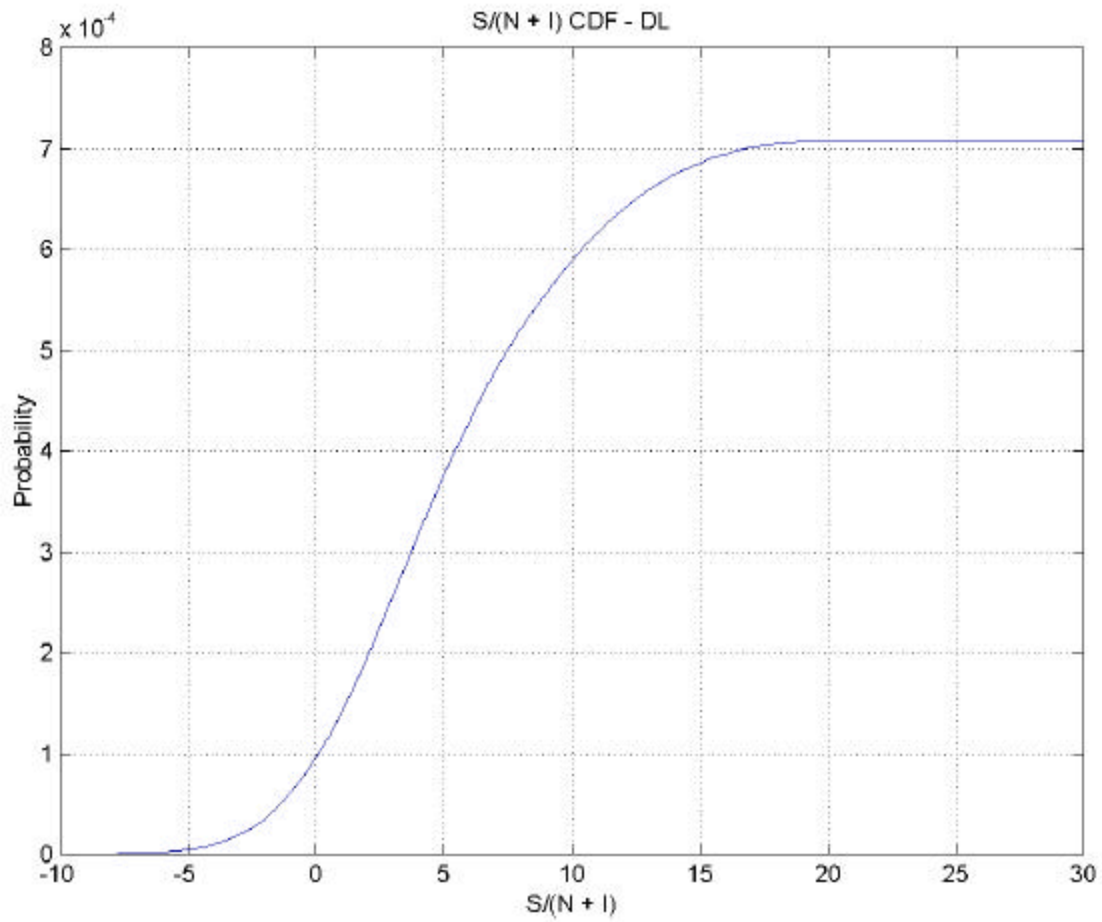


Figure 2: S/(N+I) Cumulative Distribution Function (CDF) in the downlink - 6 Sectors, Reuse 1/1, IEEE-802.16d ITU-B 10MHz@120KmpH, 2 Antenna STC + 2 Antenna MRC

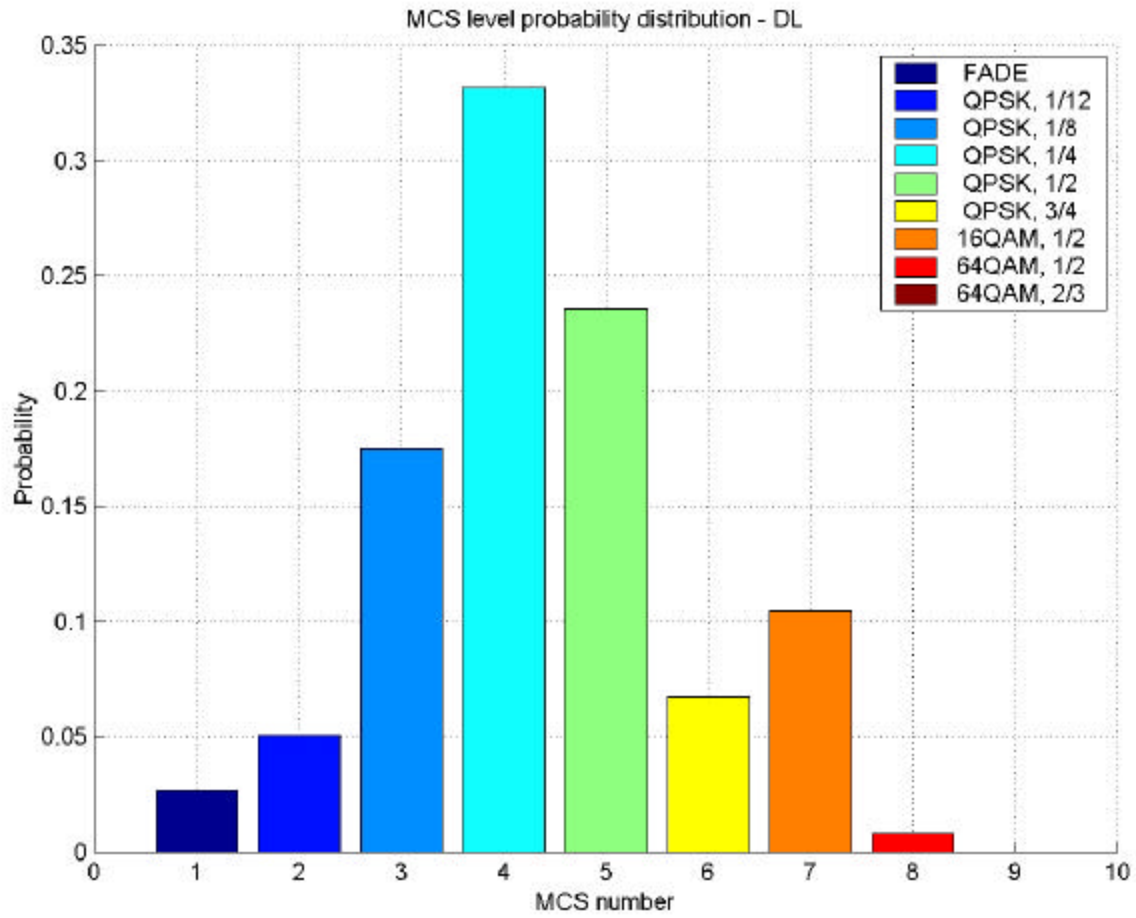


Figure 3: Modulation/Coding distribution in the downlink - 6 Sectors, Reuse 1/1, IEEE-802.16d ITU-B 10MHz@120KmpH, 2 Antenna STC + 2 Antenna MRC

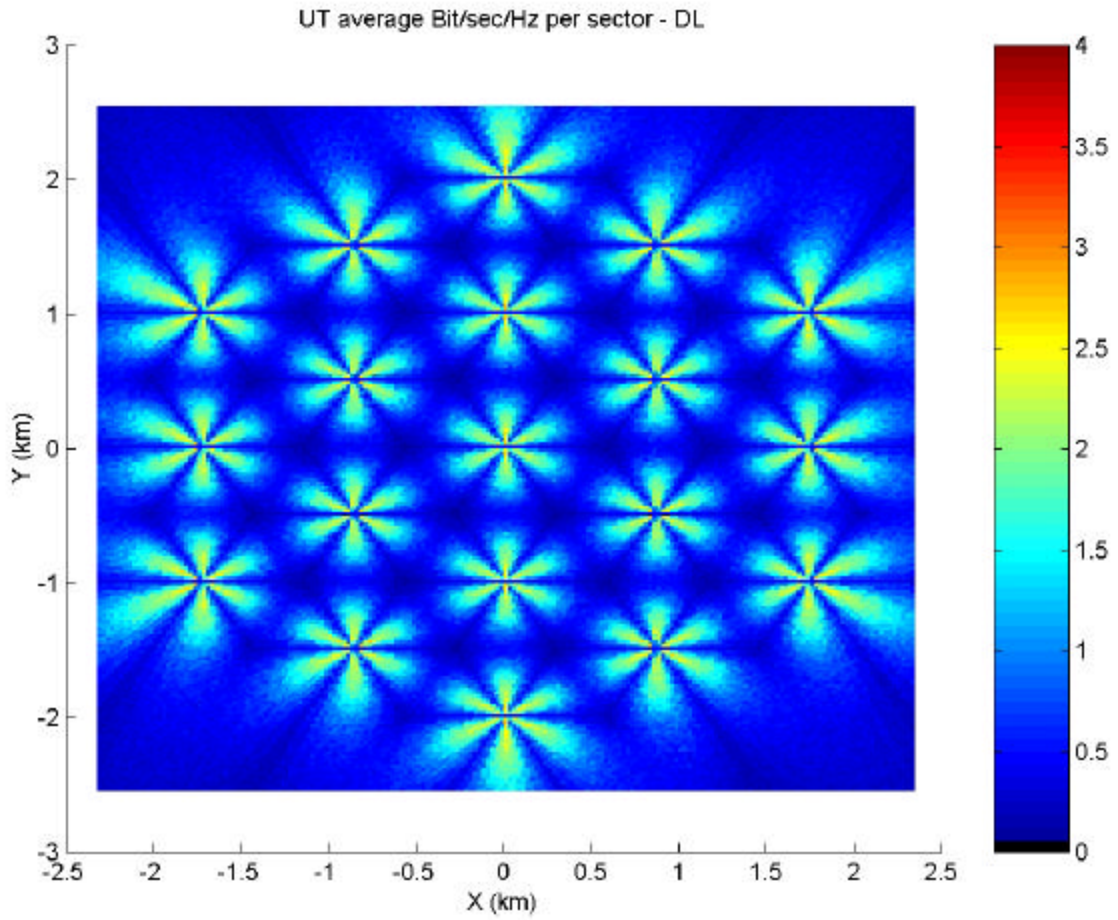


Figure 4: Average bit/sec/Hz per sector in the downlink - 6 Sectors, Reuse 1/1, IEEE-802.16d ITU-B 10MHz@120KmpH, 2 Antenna STC + 2 Antenna MRC

Scenario: 6 Sectors, Reuse 1/1, IEEE-802.16d ITU-B
10MHz@120KmpH, 2x2 Antenna diversity

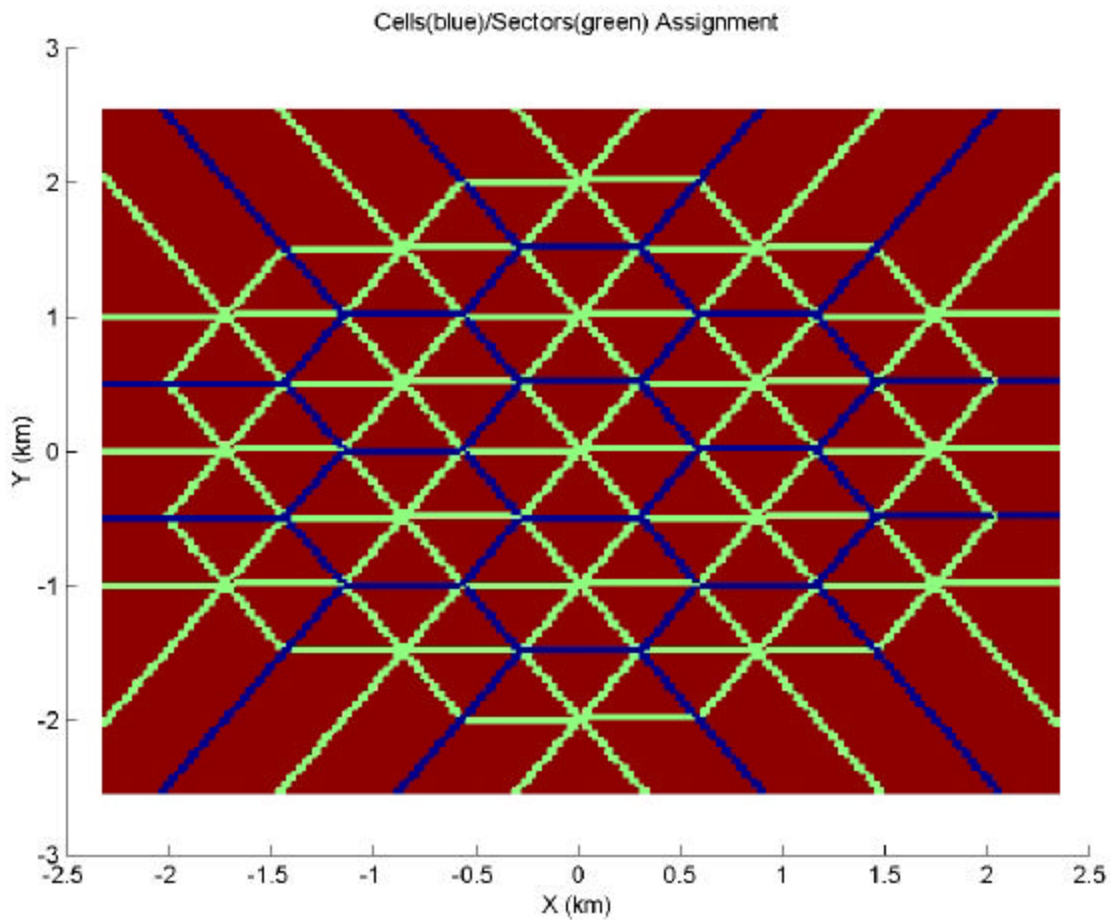


Figure 1: Cell/Sector Assignment - 6 Sectors, Reuse 1/1, IEEE-802.16d ITU-B 10MHz@120KmpH, 2x2 Antenna diversity

Coverage Statistics:

- Average DL throughput = 1.16 Bit/Sec/Hz per sector
- DL Coverage
 - **FADE - 0.03%**
 - QPSK, 1/12 - 0.36%
 - QPSK, 1/8 - 5.26%
 - QPSK, 1/4 - 26.65%
 - QPSK, 1/2 - 33.03%
 - QPSK, 3/4 - 10.72%
 - 16QAM, 1/2 - 19.92%
 - 64QAM, 1/2 - 3.83%
 - 64QAM, 2/3 - 0.21%

- Average UL throughput = 0.89 Bit/Sec/Hz per sector
- UL Coverage
 - **FADE - 2.97%**
 - QPSK, 1/12 - 3.71%
 - QPSK, 1/8 - 12.01%
 - QPSK, 1/4 - 29.10%
 - QPSK, 1/2 - 29.67%
 - QPSK, 3/4 - 9.23%
 - 16QAM, 1/2 - 12.51%
 - 64QAM, 1/2 - 0.75%
 - 64QAM, 2/3 - 0.05%

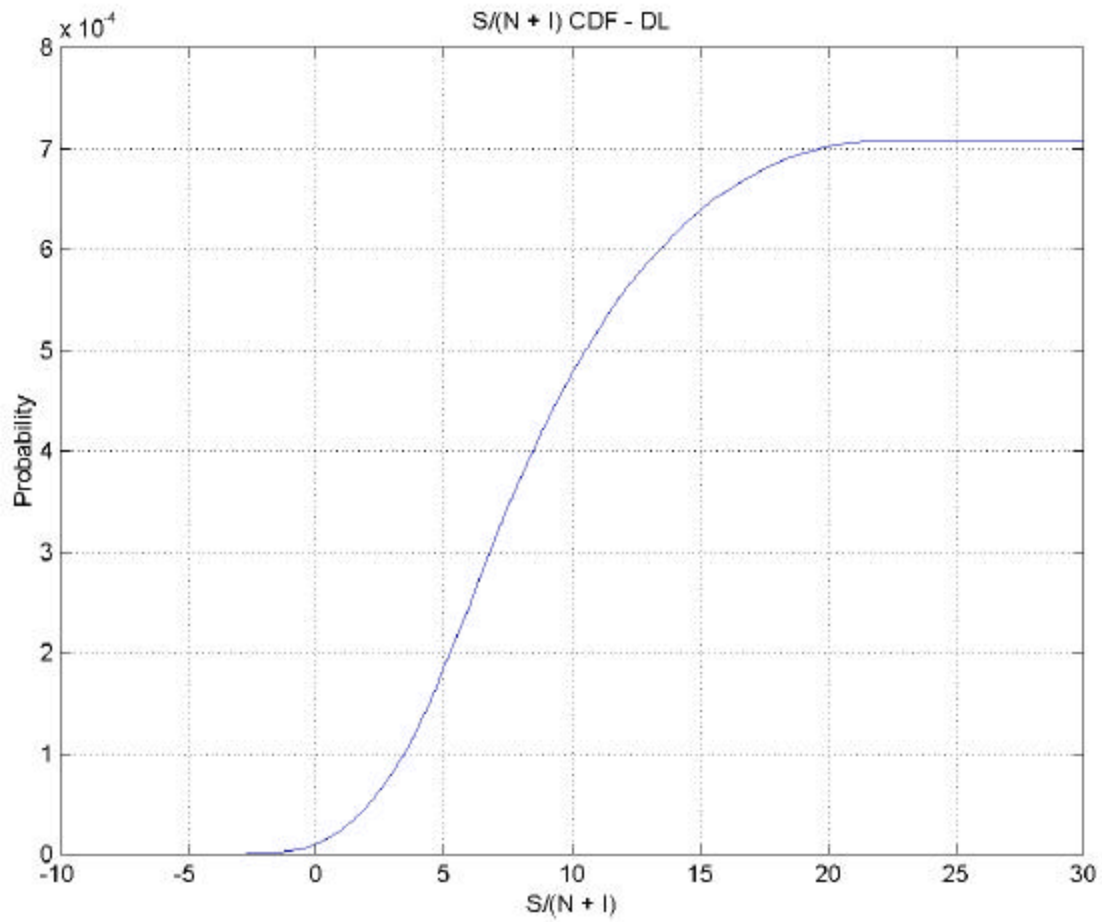


Figure 2: S/(N+I) Cumulative Distribution Function (CDF) in the downlink - 6 Sectors, Reuse 1/1, IEEE-802.16d ITU-B 10MHz@120KmpH, 2x2 Antenna diversity

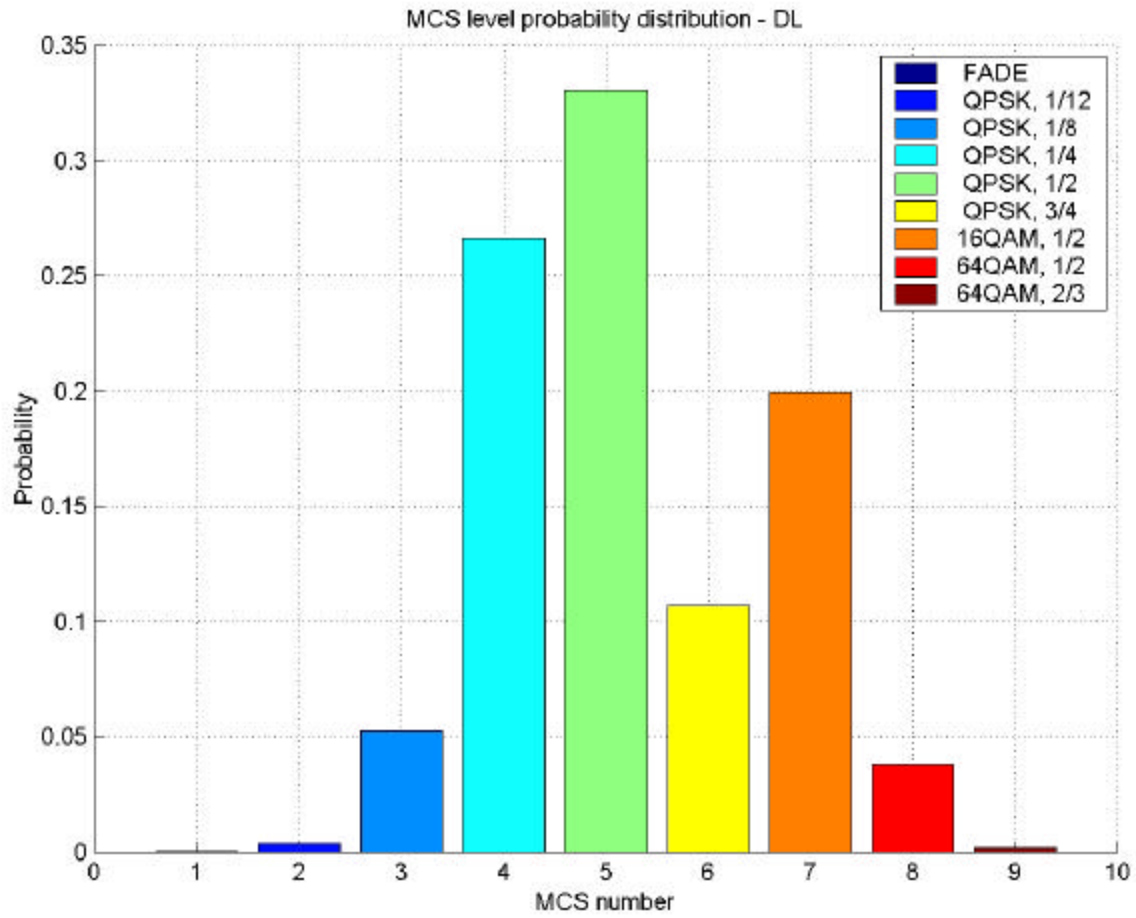


Figure 3: Modulation/Coding distribution in the downlink - 6 Sectors, Reuse 1/1, IEEE-802.16d ITU-B 10MHz@120KmpH, 2x2 Antenna diversity

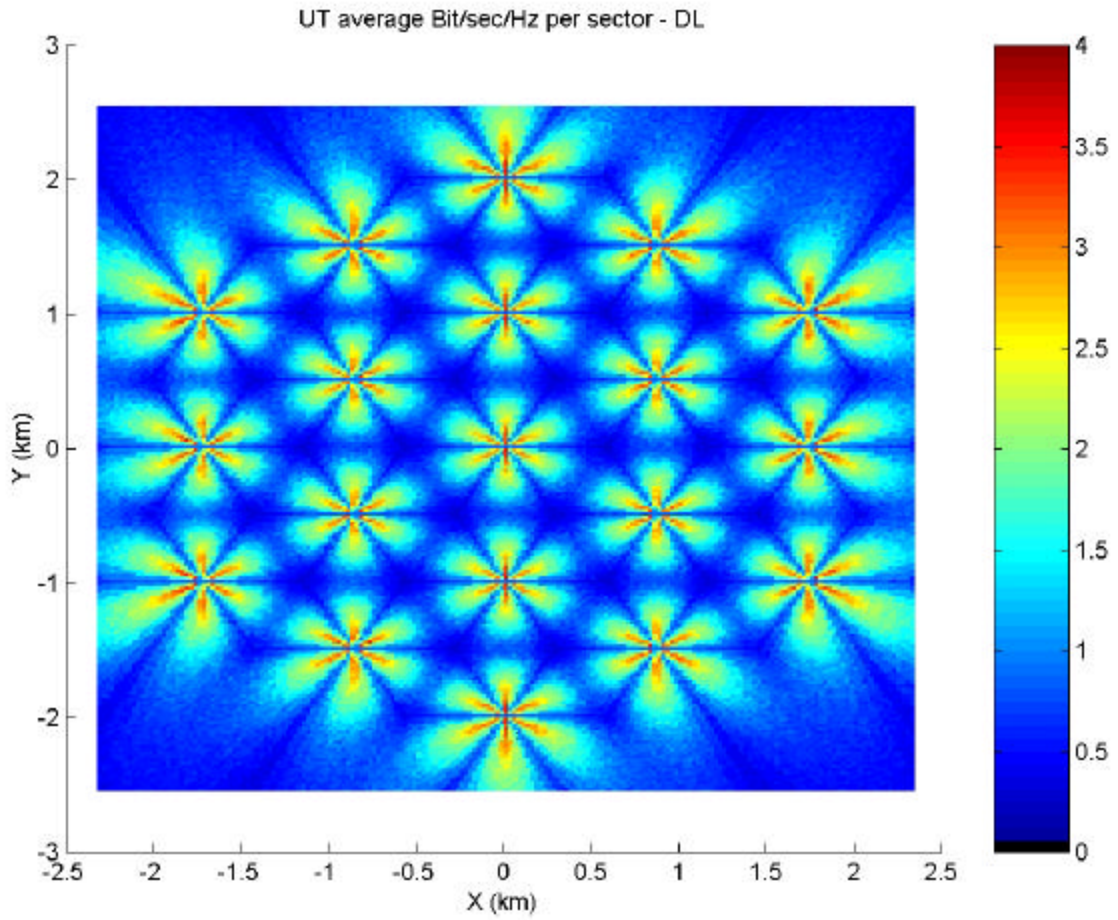


Figure 4: Average bit/sec/Hz per sector in the downlink - 6 Sectors, Reuse 1/1, IEEE-802.16d ITU-B 10MHz@120KmpH, 2x2 Antenna diversity

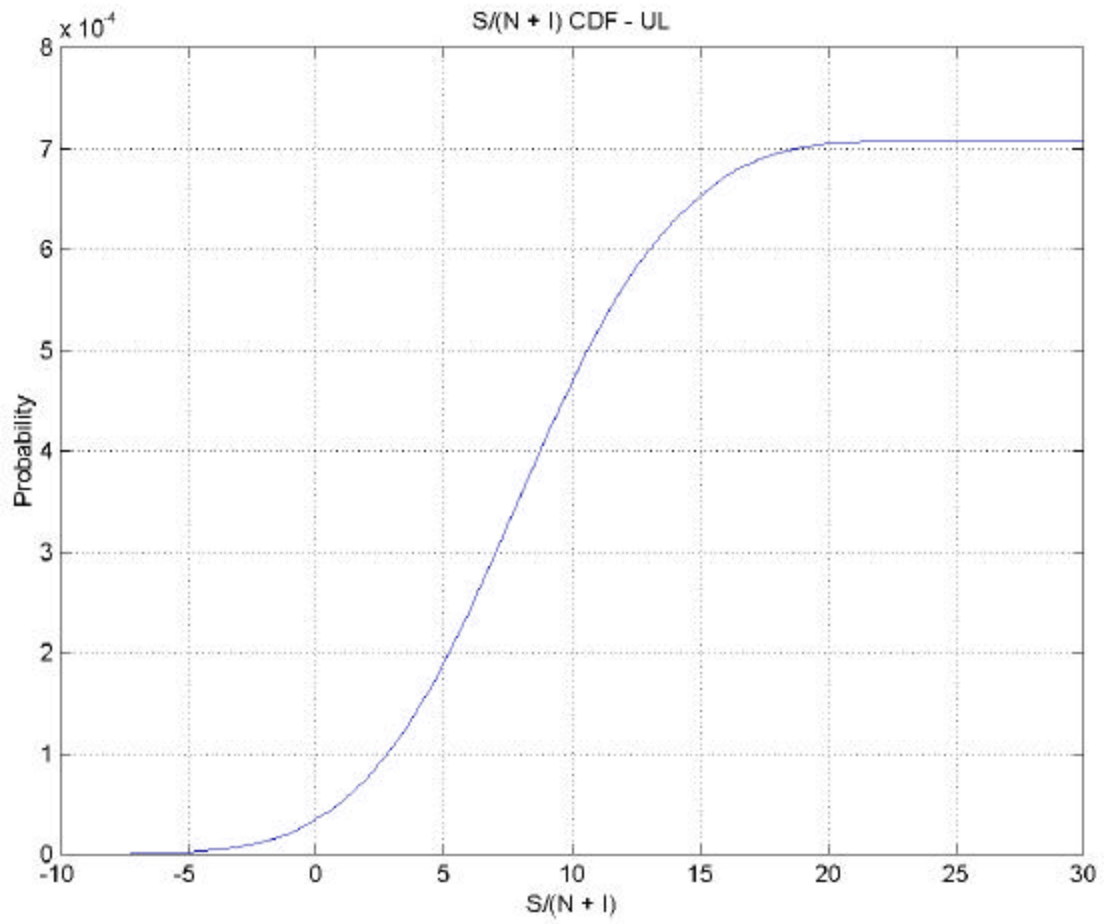


Figure 5: S/(N+I) Cumulative Distribution Function (CDF) in the uplink - 6 Sectors, Reuse 1/1, IEEE-802.16d ITU-B 10MHz@120KmpH, 2x2 Antenna diversity

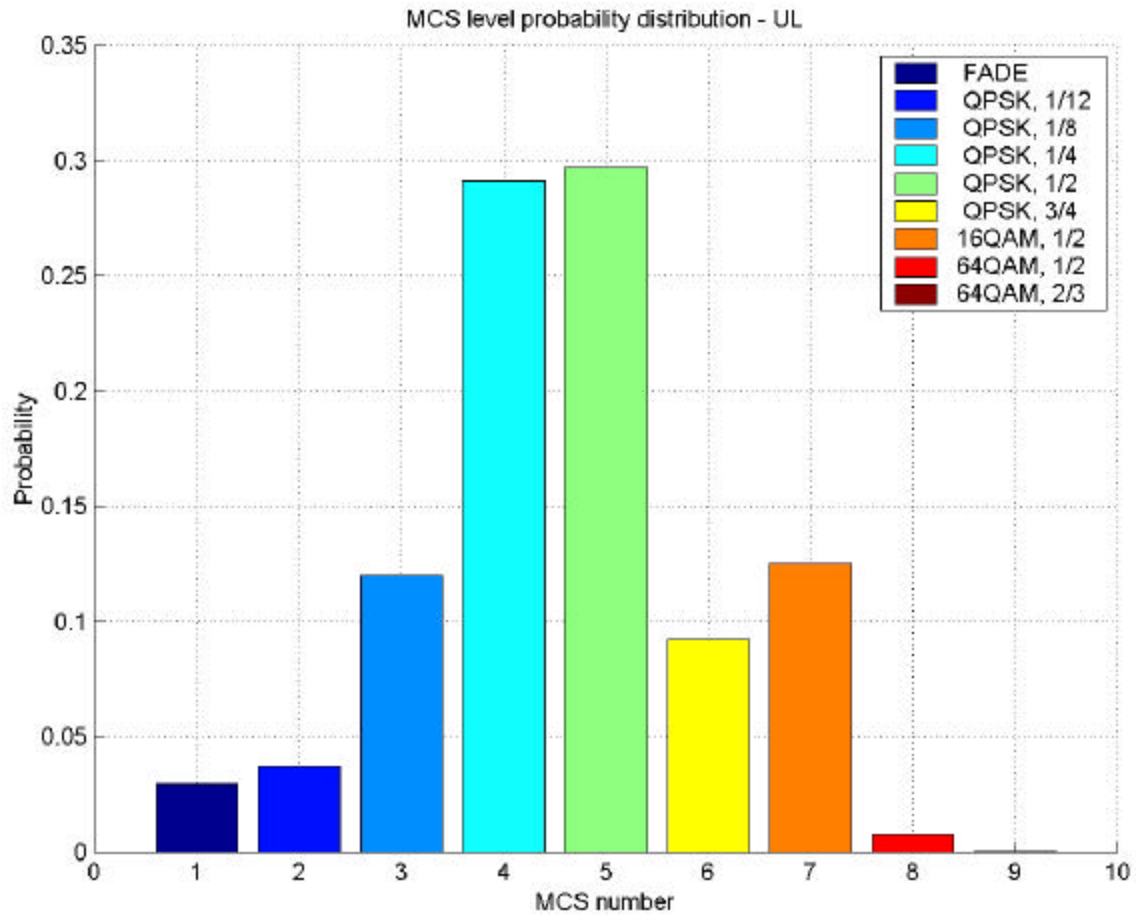


Figure 6: Modulation/Coding distribution in the uplink - 6 Sectors, Reuse 1/1, IEEE-802.16d ITU-B 10MHz@120Kmph, 2x2 Antenna diversity

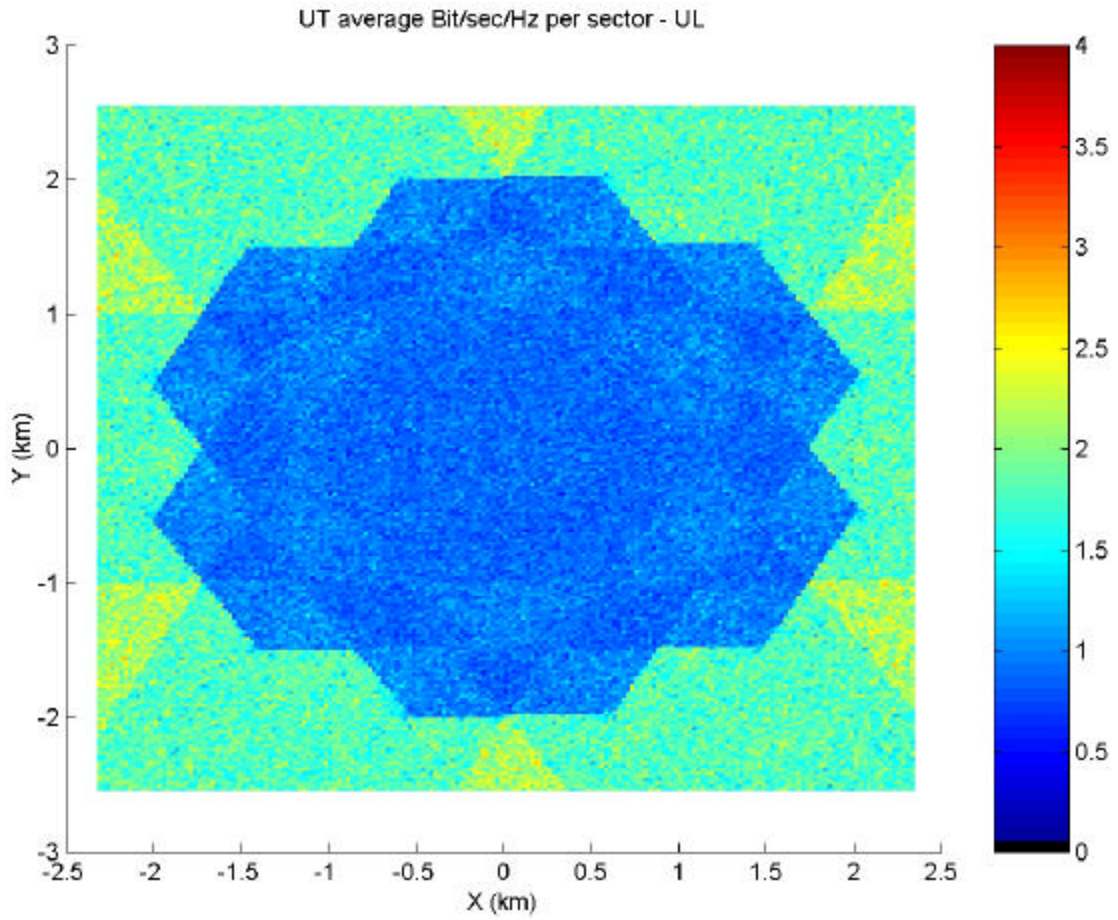


Figure 7: Average bit/sec/Hz per sector in the uplink - 6 Sectors, Reuse 1/1, IEEE-802.16d ITU-B 10MHz@120KmpH, 2x2 Antenna diversity

Scenario: 24 Sectors, Reuse 1/1, IEEE-802.16d ITU-B 10MHz@120KmpH (Simulating AAS operation)

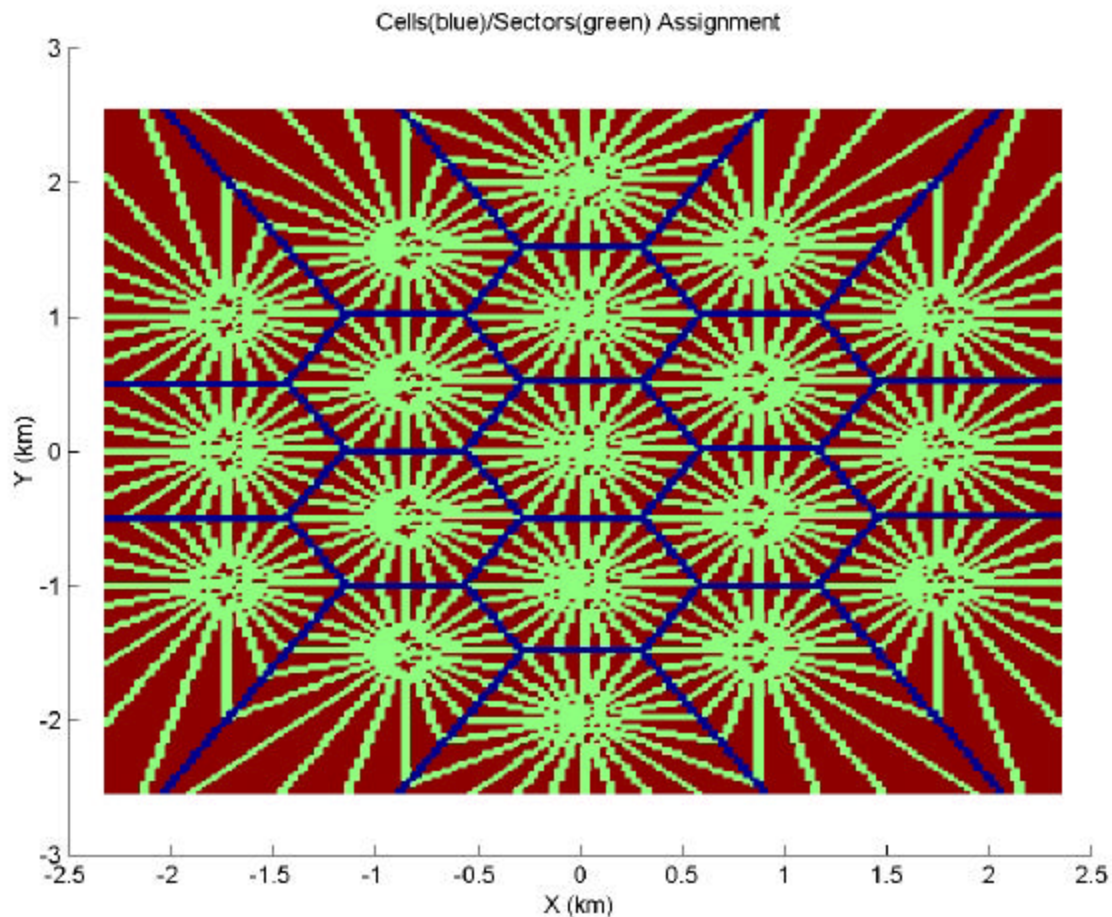


Figure 1: Cell/Sector Assignment - 24 Sectors, Reuse 1/1, IEEE-802.16d ITU-B 10MHz@120KmpH (Simulating AAS operation)

Coverage Statistics:

- Average DL throughput = 0.79 Bit/Sec/Hz per sector
 - DL Coverage
 - **FADE - 11.50%**
 - QPSK, 1/12 - 8.45%
 - QPSK, 1/8 - 17.54%
 - QPSK, 1/4 - 21.41%
 - QPSK, 1/2 - 16.76%
 - QPSK, 3/4 - 7.11%
 - 16QAM, 1/2 - 16.66%
 - 64QAM, 1/2 - 0.57%
 - 64QAM, 2/3 - 0.00%
-

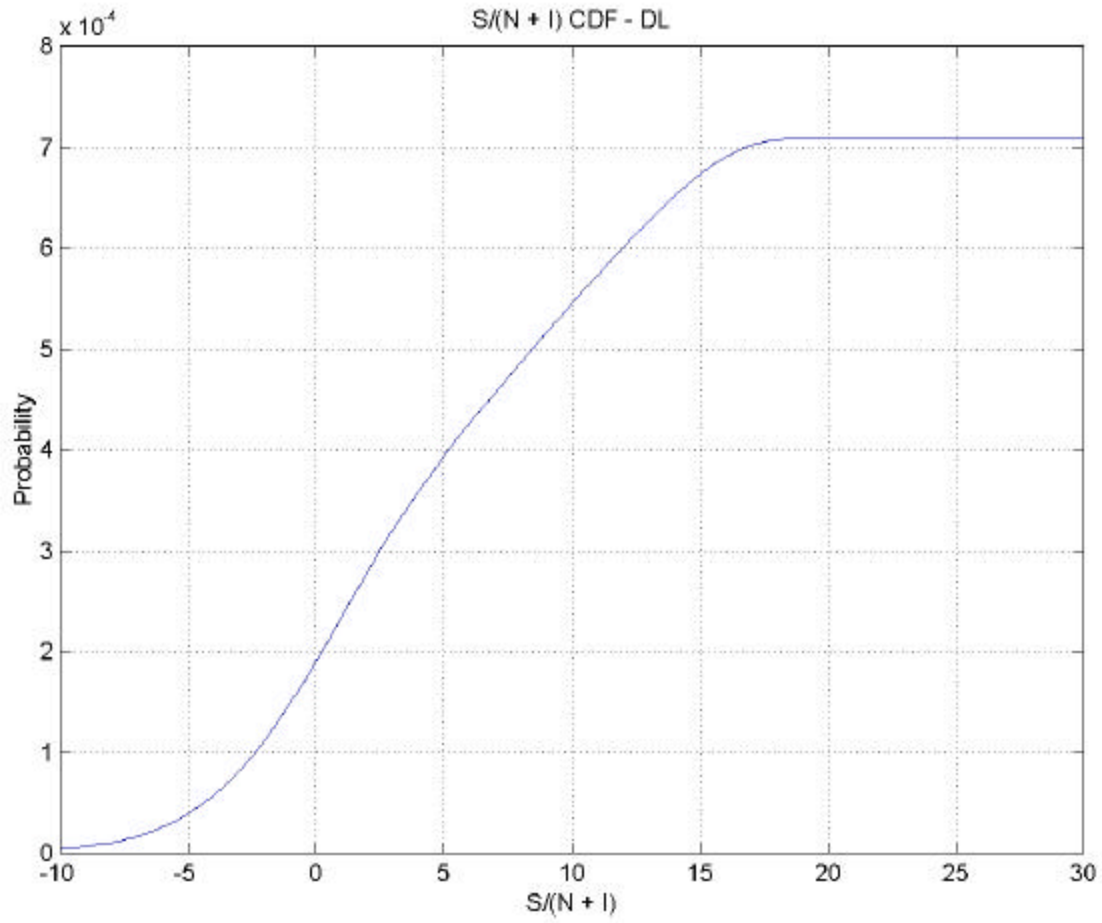


Figure 2: S/(N+I) Cumulative Distribution Function (CDF) in the downlink - 24 Sectors, Reuse 1/1, IEEE-802.16d ITU-B 10MHz@120KmpH (Simulating AAS operation)

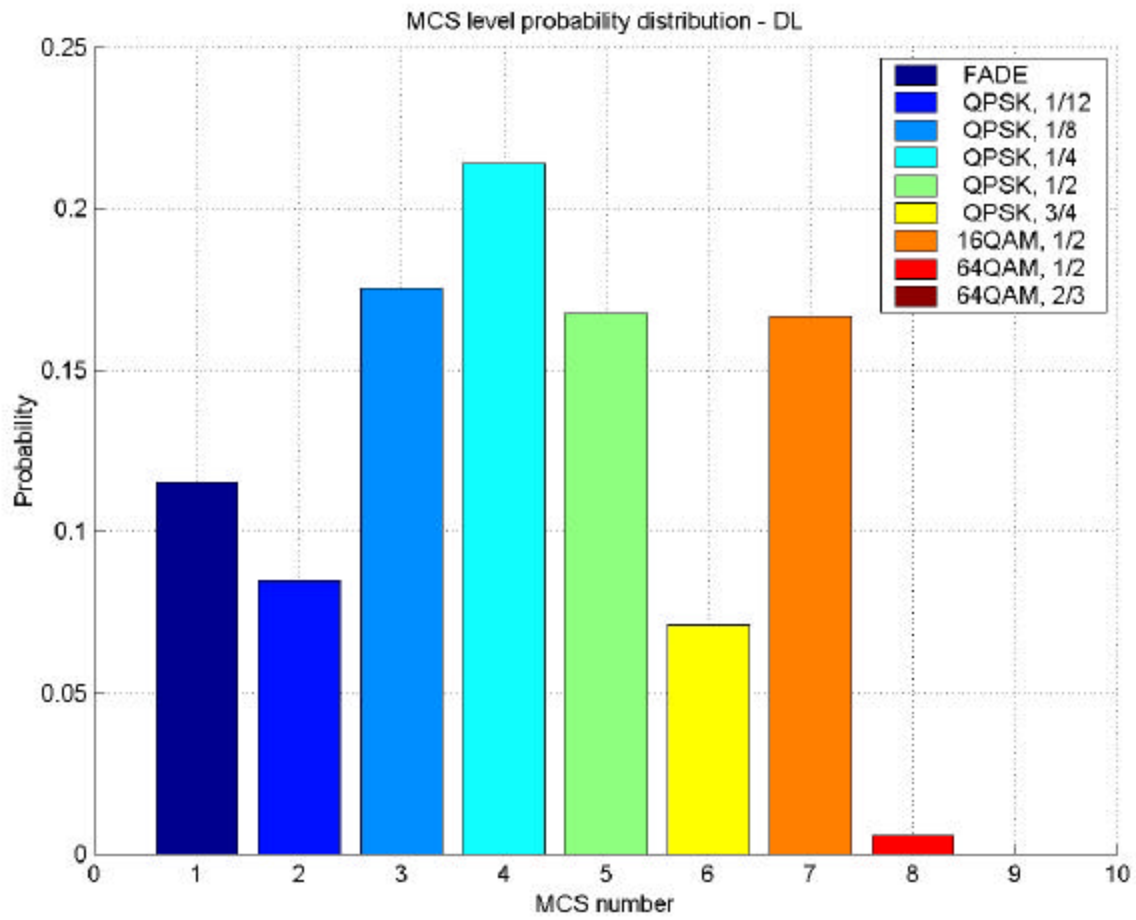


Figure 3: Modulation/Coding distribution in the downlink - 24 Sectors, Reuse 1/1, IEEE-802.16d ITU-B 10MHz@120KmpH (Simulating AAS operation)

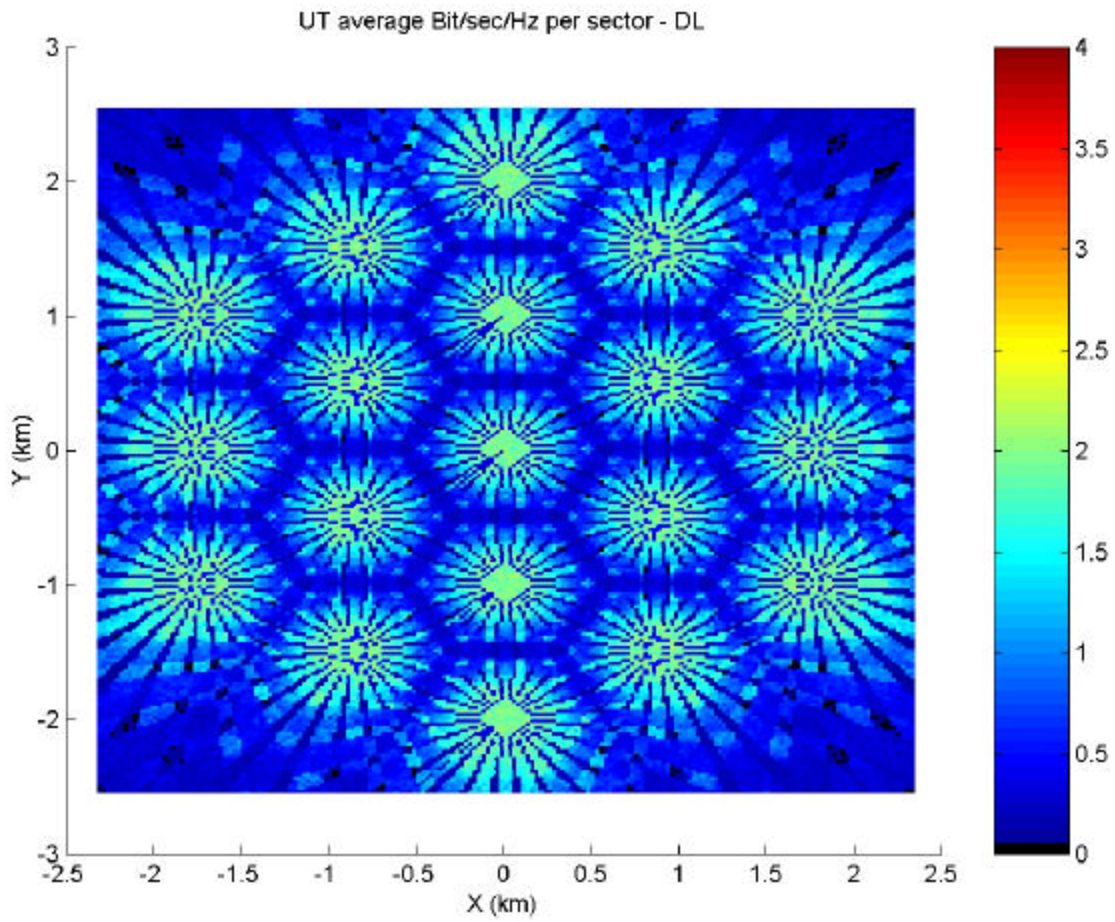


Figure 4: Average bit/sec/Hz per sector in the downlink - 24 Sectors, Reuse 1/1, IEEE-802.16d ITU-B 10MHz@120KmpH (Simulating AAS operation)

References

[1] RECOMMENDATION ITU-R M.1225, GUIDELINES FOR EVALUATION OF RADIO TRANSMISSION TECHNOLOGIES FOR IMT-2000

[2] IEEE C802.16d-03/78r1, "Coverage/Capacity simulations for OFDMA PHY in with ITU-T channel model", Yigal Leiba, Yossi Segal, Zion Hadad, and Itzik Kitroser