

Project	<b>IEEE 802.16 Broadband Wireless Access Working Group</b> < <a href="http://ieee802.org/16">http://ieee802.org/16</a> >	
Title	<b>Correct Figure for TEK management in BS and MS</b>	
Date Submitted	<b>2005-07-15</b>	
	Sangwoo Doe, Sungsoo Oh, SungHo Yoo POSDATA Co. Ltd.	doeing@posdata.co.kr
Re:	Response to Sponsor Ballot on IEEE802.16e/D9 document	
Abstract	<b>Correct Figure for TEK management in BS and MS</b>	
Purpose	To incorporate the figure changes proposed in this contribution into the 802.16e/D9 draft	
Notice	This document has been prepared to assist IEEE 802.16. It is offered as a basis for discussion and is not binding on the contributing individual(s) or organization(s). The material in this document is subject to change in form and content after further study. The contributor(s) reserve(s) the right to add, amend or withdraw material contained herein.	
Release	The contributor grants a free, irrevocable license to the IEEE to incorporate material contained in this contribution, and any modifications thereof, in the creation of an IEEE Standards publication; to copyright in the IEEE's name any IEEE Standards publication even though it may include portions of this contribution; and at the IEEE's sole discretion to permit others to reproduce in whole or in part the resulting IEEE Standards publication. The contributor also acknowledges and accepts that this contribution may be made public by IEEE 802.16.	
Patent Policy and Procedures	The contributor is familiar with the IEEE 802.16 Patent Policy and Procedures (Version 1.0) < <a href="http://ieee802.org/16/ipr/patents/policy.html">http://ieee802.org/16/ipr/patents/policy.html</a> >, including the statement "IEEE standards may include the known use of patent(s), including patent applications, if there is technical justification in the opinion of the standards-developing committee and provided the IEEE receives assurance from the patent holder that it will license applicants under reasonable terms and conditions for the purpose of implementing the standard."  Early disclosure to the Working Group of patent information that might be relevant to the standard is essential to reduce the possibility for delays in the development process and increase the likelihood that the draft publication will be approved for publication. Please notify the Chair < <a href="mailto:r.b.marks@ieee.org">mailto:r.b.marks@ieee.org</a> > as early as possible, in written or electronic form, of any patents (granted or under application) that may cover technology that is under consideration by or has been approved by IEEE 802.16. The Chair will disclose this notification via the IEEE 802.16 web site < <a href="http://ieee802.org/16/ipr/patents/notices">http://ieee802.org/16/ipr/patents/notices</a> >.	

# Correct Figure for TEK management in BS and MS

*Sangwoo Doe, Sungsoo Oh, Sungho Yoo,  
POSDATA Co. Ltd.*

## 1. Problem

IEEE 802.16 [1] describes as follows:

“Through operation of its TEK state machines, an SS shall request a new set of traffic keying material a configurable amount of time, the *TEK Grace Time* [see points (x) and (y) in Figure 134], before the MS's latest TEK is scheduled to expire.” However, Figure 134 is incorrect.

## 2. Proposed Solution

We suggest a correct figure as follows.

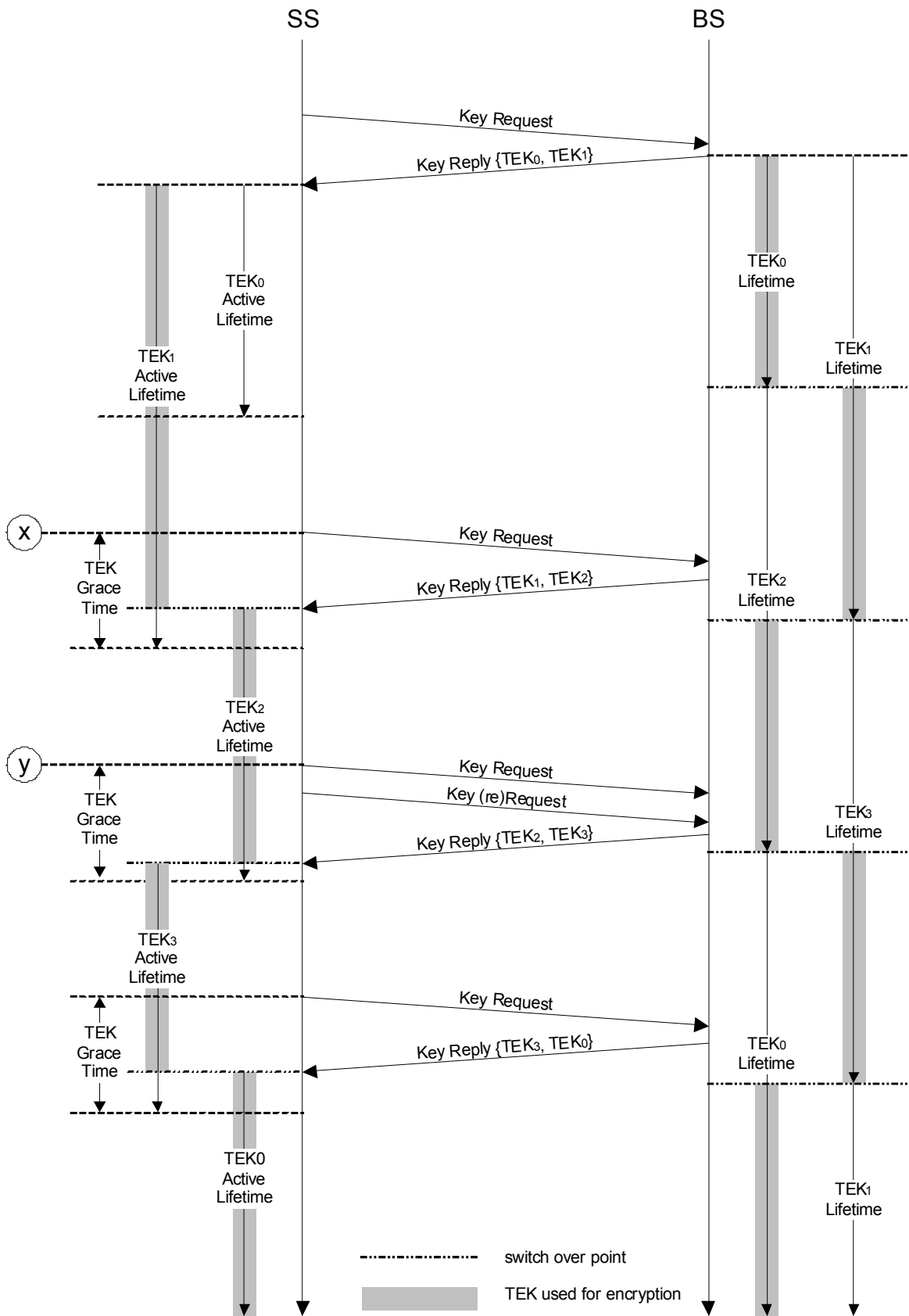


Figure 134 -TEK management in BS and SS

### 3. References

- [1] IEEE 802.16- 2004 IEEE Standards for local and metropolitan area networks part 16: Air interface for fixed broadband wireless access systems.
- [2] DOCSIS1.1 SP-BPI+I10-030730 Cable Television Laboratories Specification to describe MAC layer security services for DOCSIS® CMTS.