

# Proposal for MDI Interface Jig

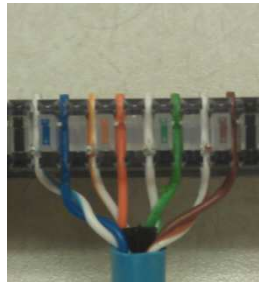
---

Richard Mei  
Commscope  
11/06/2012

# MDI Interface Jig for RTPGE EMC Evaluation

---

- An IDC-based (Insulation Displacement Contact) MDI connector used on test jigs to evaluate EMC performance of various link segments
  - Take the uncertainty of different MDI out of the picture in terms of EMC evaluation
  - Consistent results
  - Show no preference to existing automotive connectors
  - IDC connector can be easily modeled and characterized
  - Can be flexibly configured
    - Accept any gauge of conductors (e.g. 23 to 26 AWG)
    - Accept any number of conductors (e.g., 1 pair or 2 pair)
  - Example of good transmission and balance performance (Refer to contribution made in September 2012 RTPGE SG; choudhury\_01\_0912.pdf)



**An example of IDC connector**