

Dealing with 802.1CB and Out-of-Order PDUs

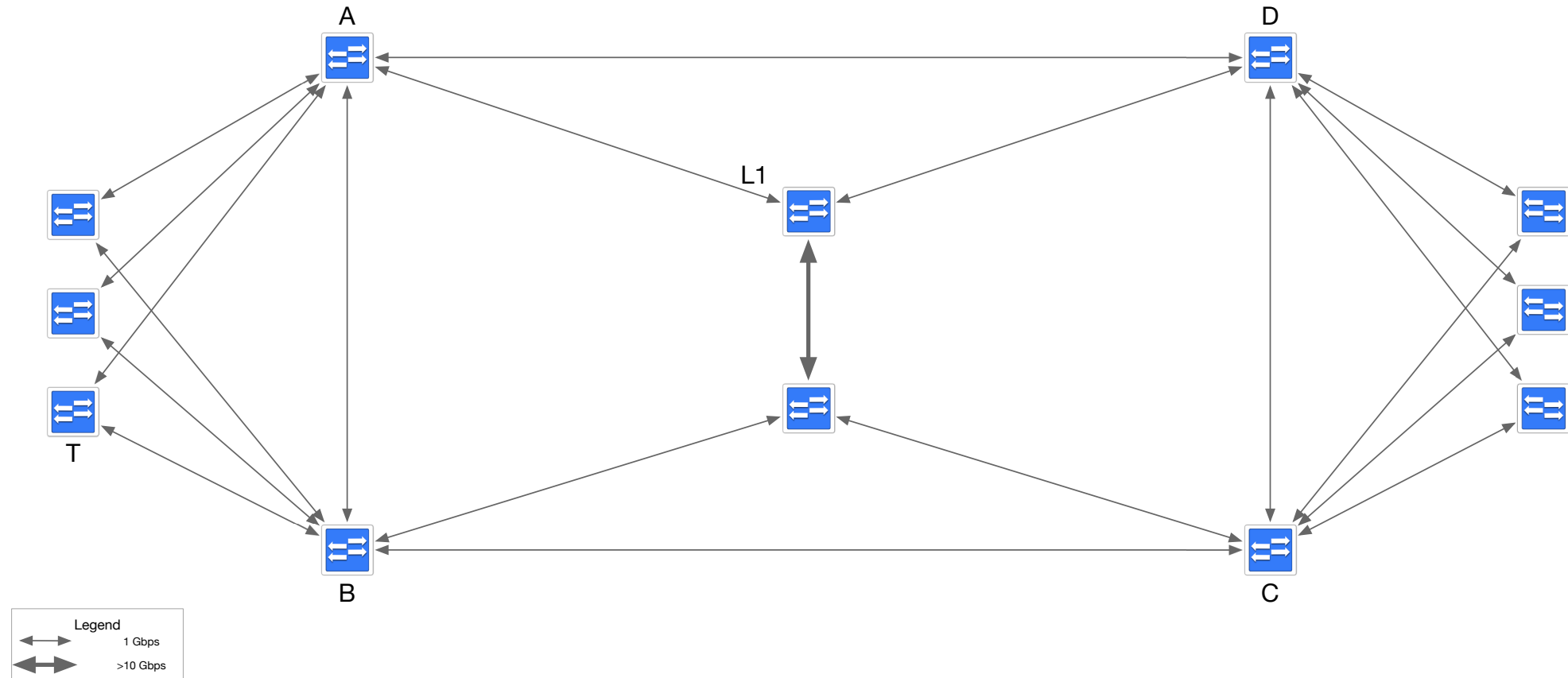
Gordon Bechtel

2020-05-19

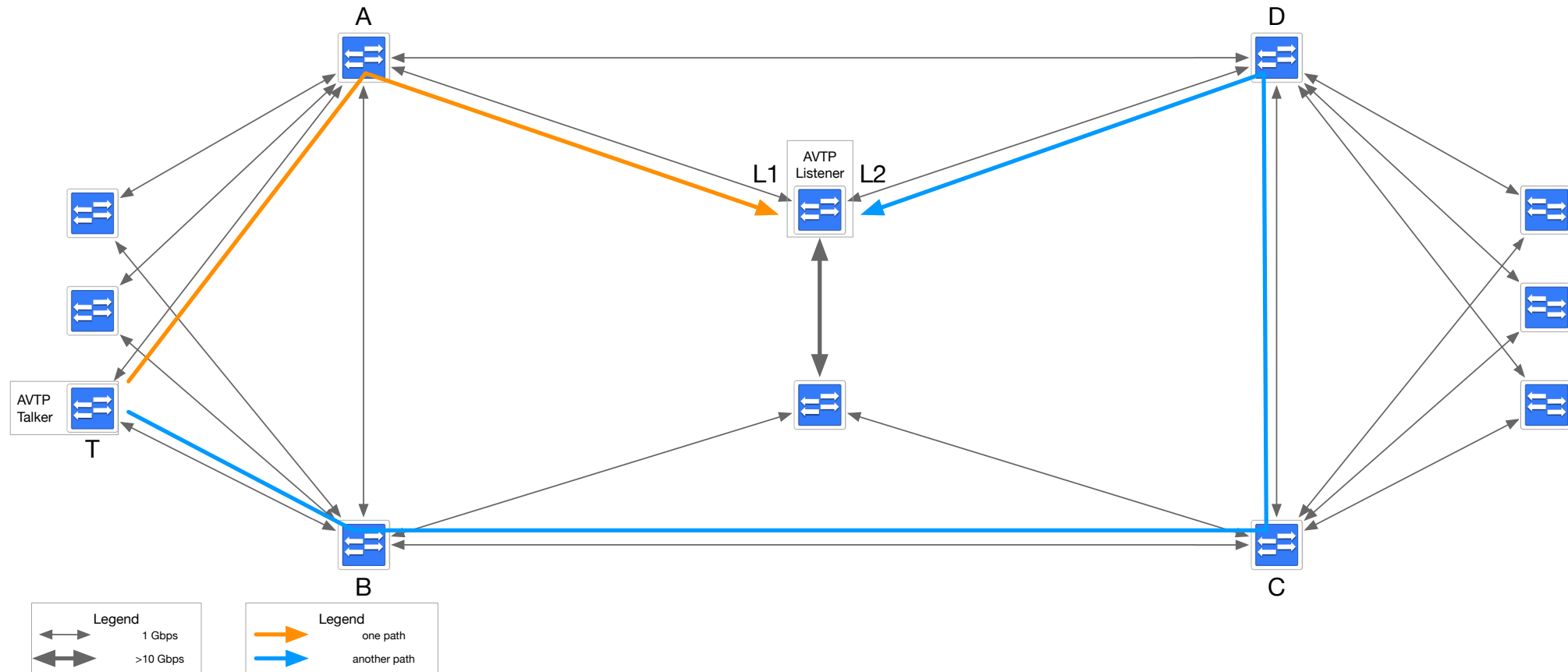
Revision History

Revision	Made By	Date	Description
0.1	Gordon Bechtel	2020-05-19	Initial Release

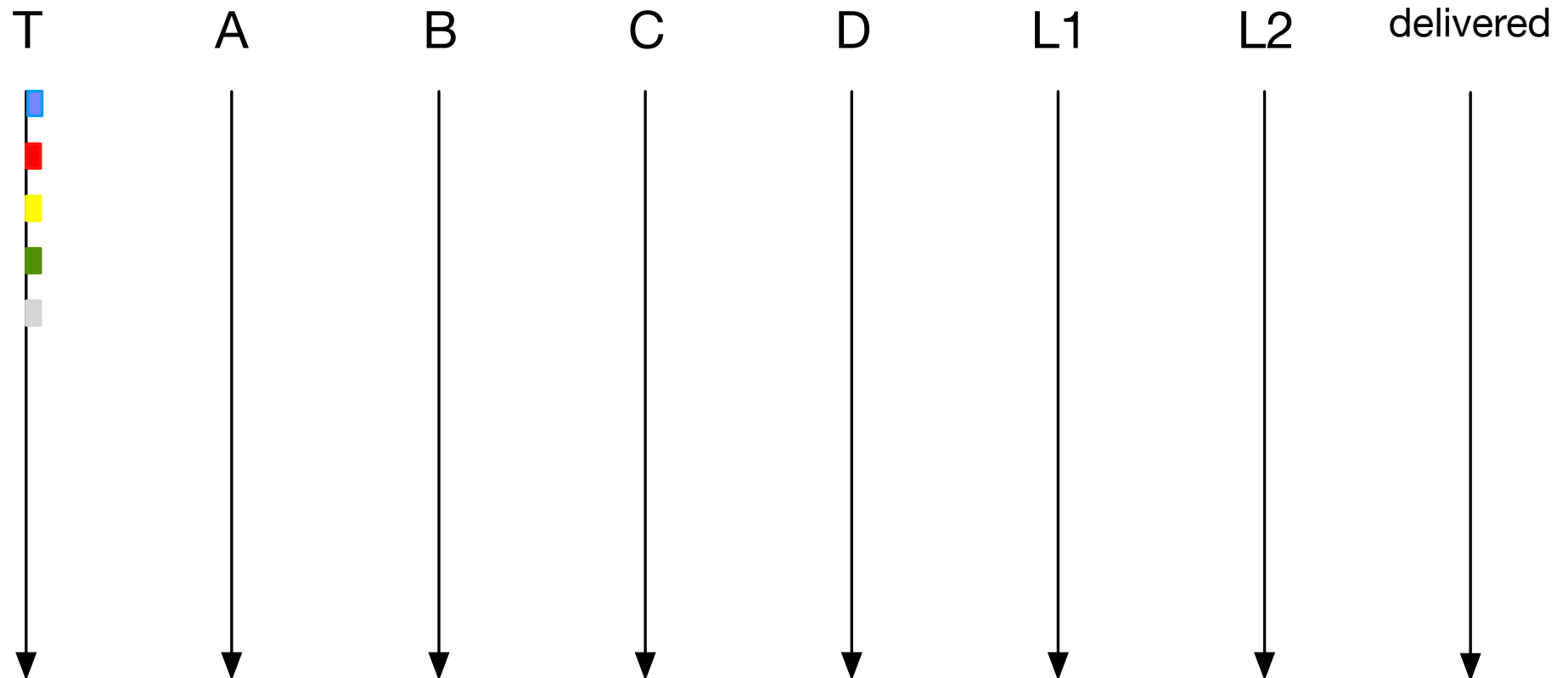
Example Topology



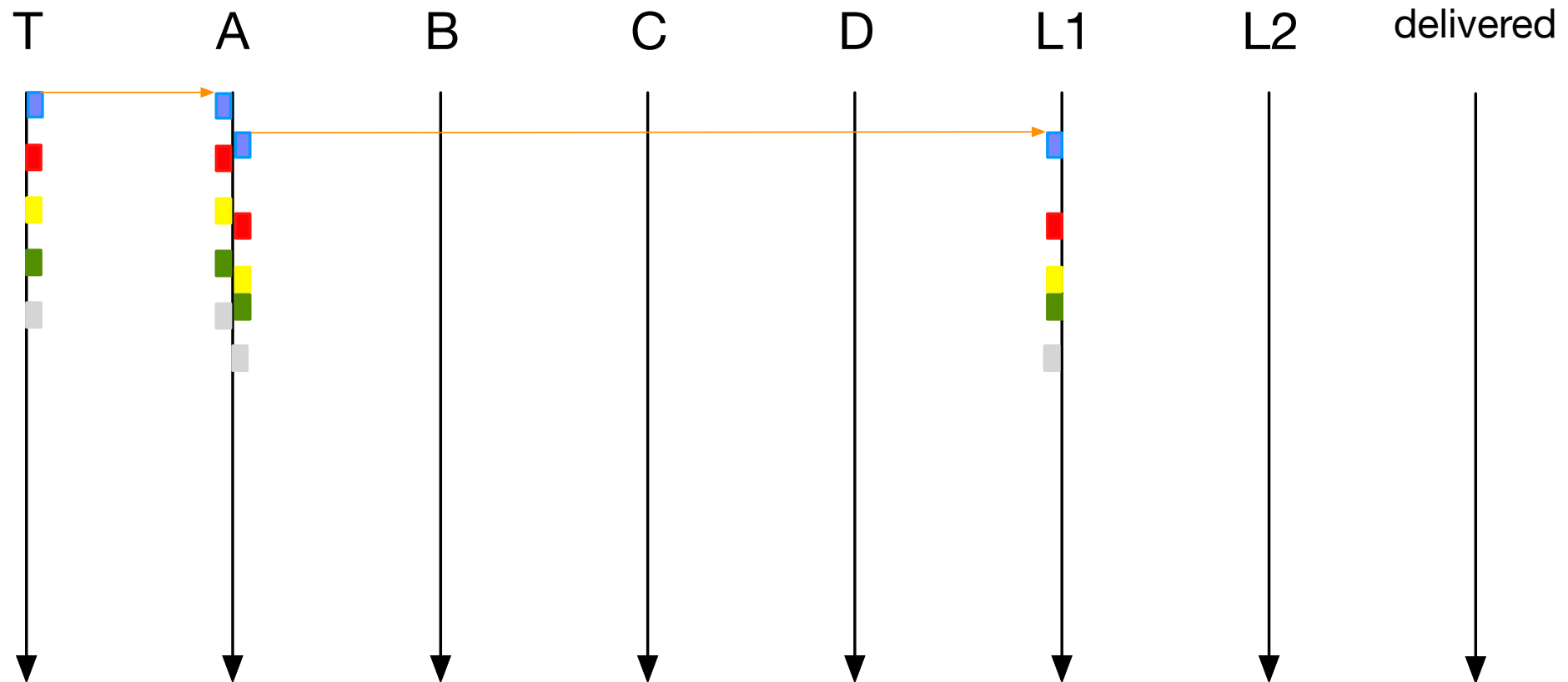
Example of Redundant Paths



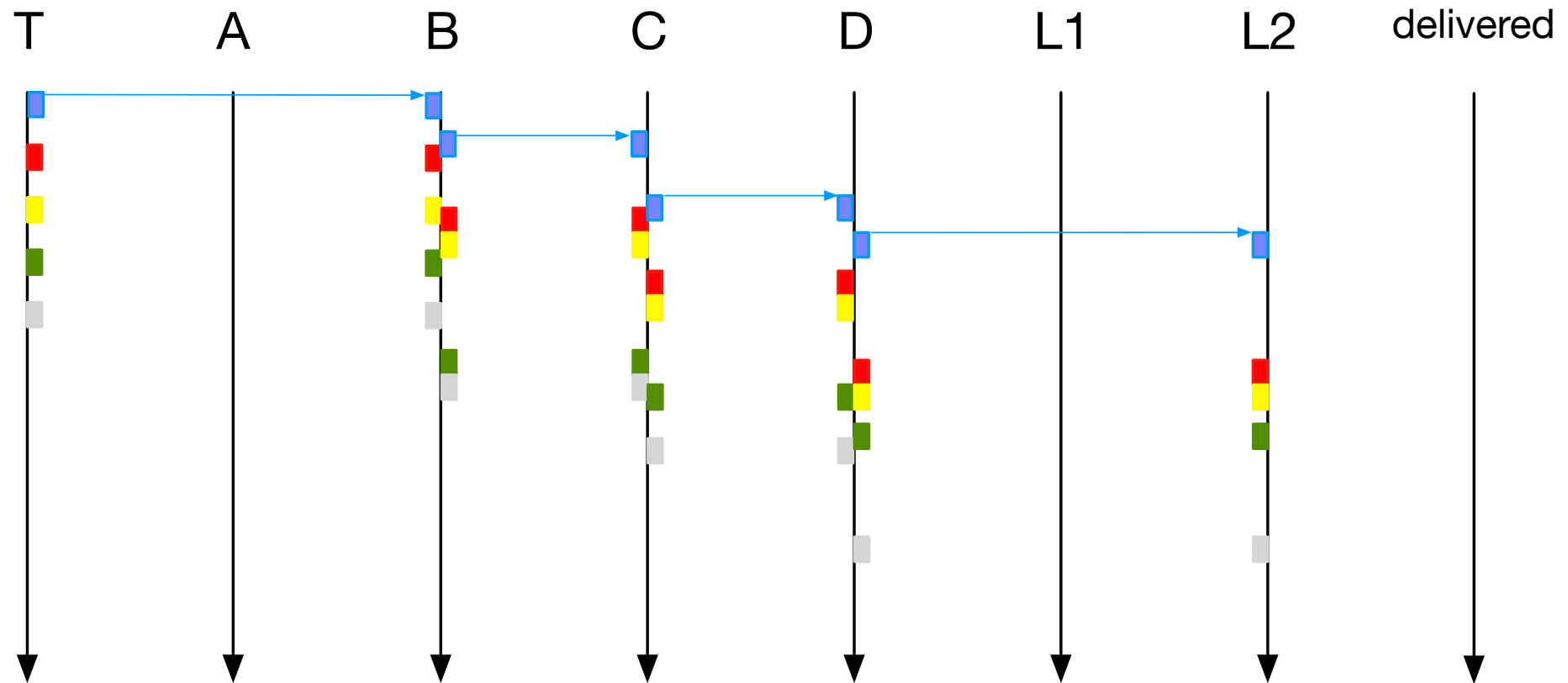
Example PDUs and Timing on Network



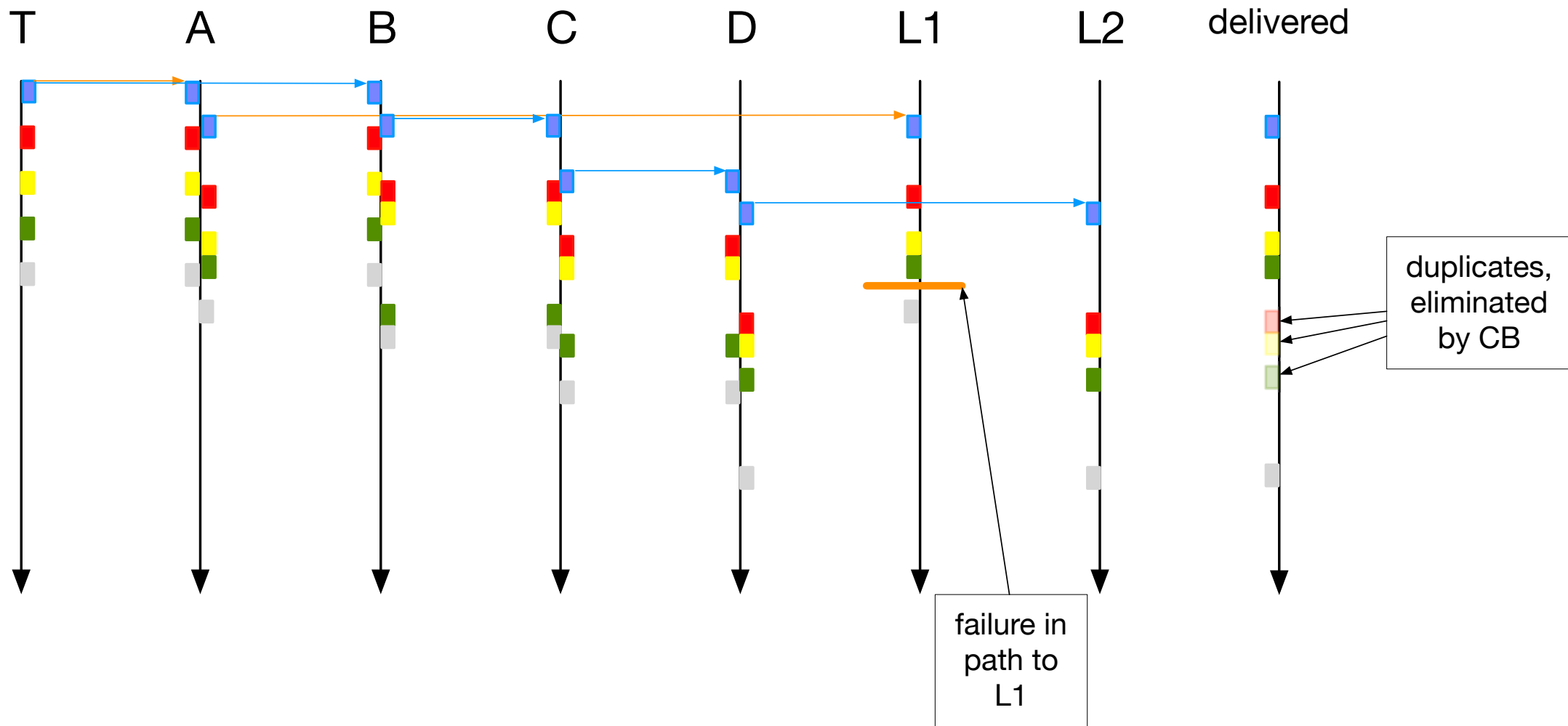
Orange Path



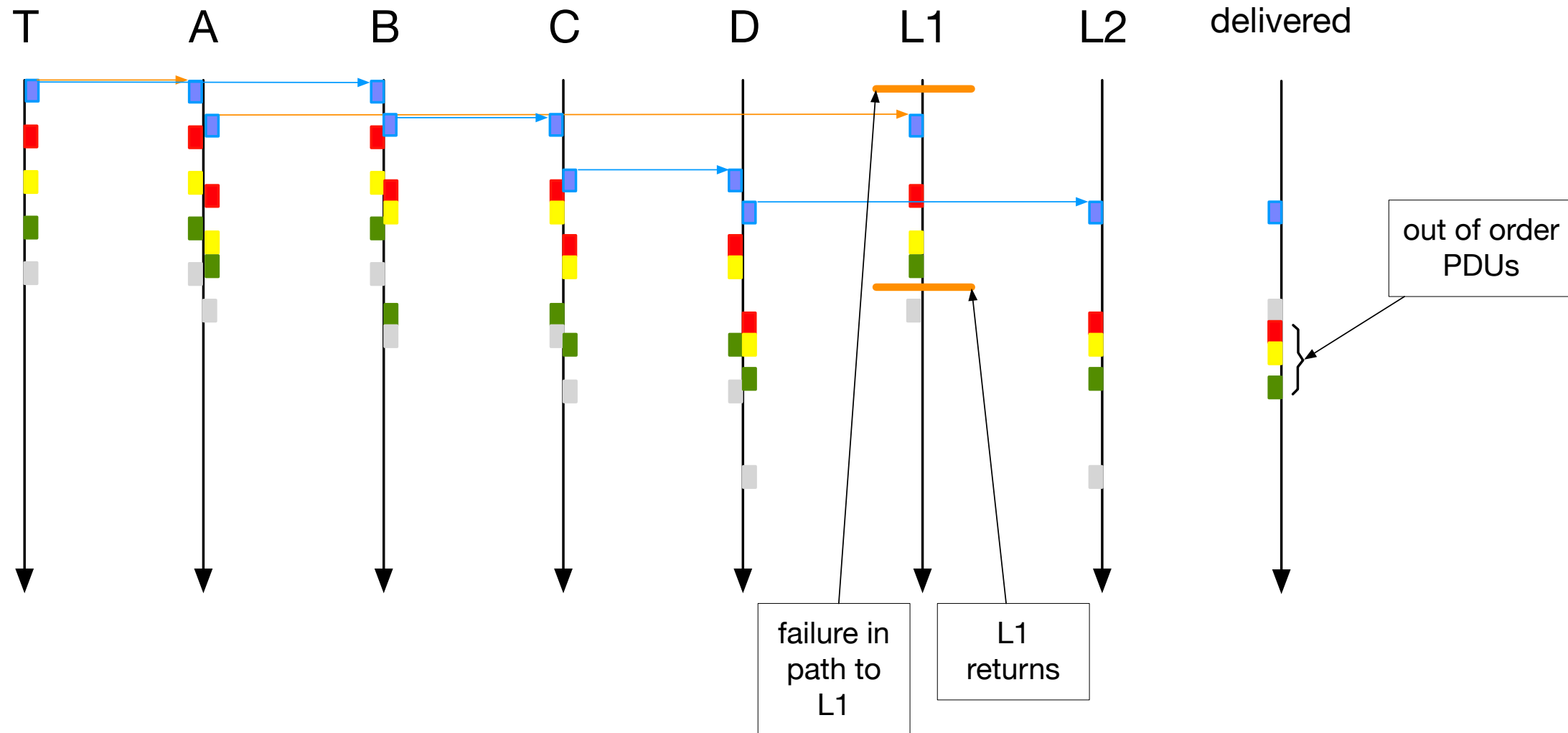
Blue Path



Delivery: Short Path Failure

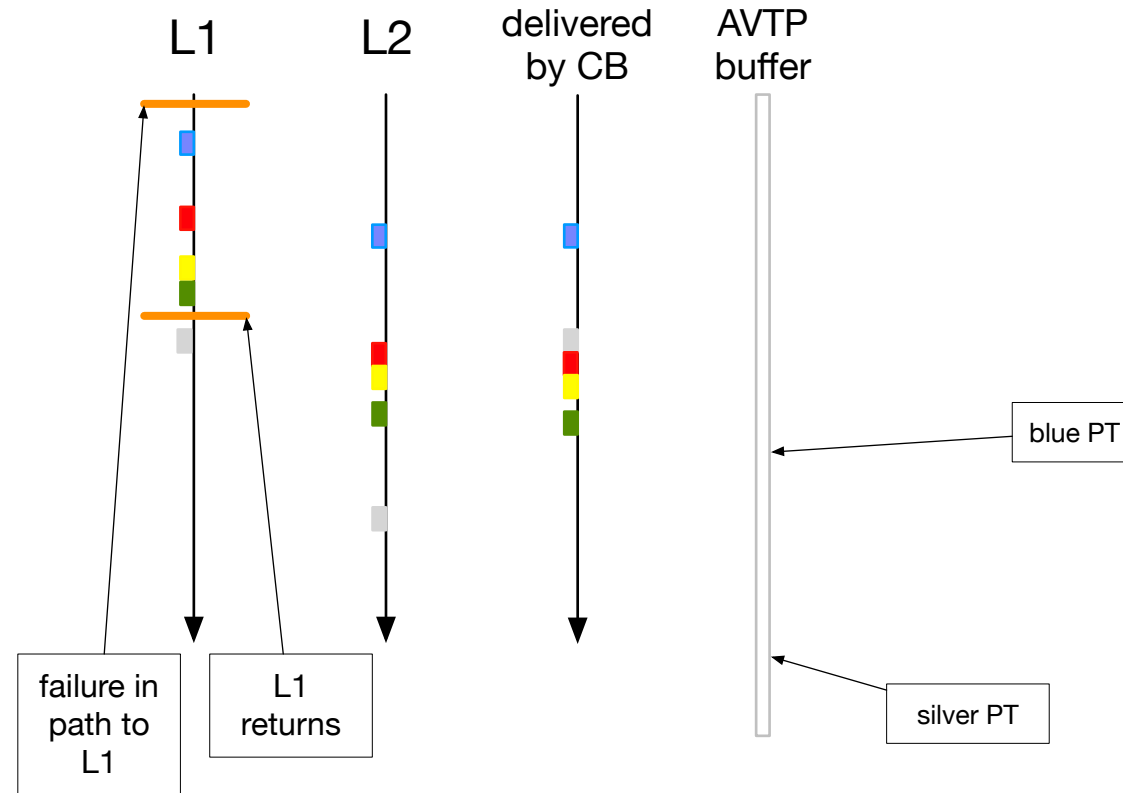


Delivery: Short Path Fails and Returns

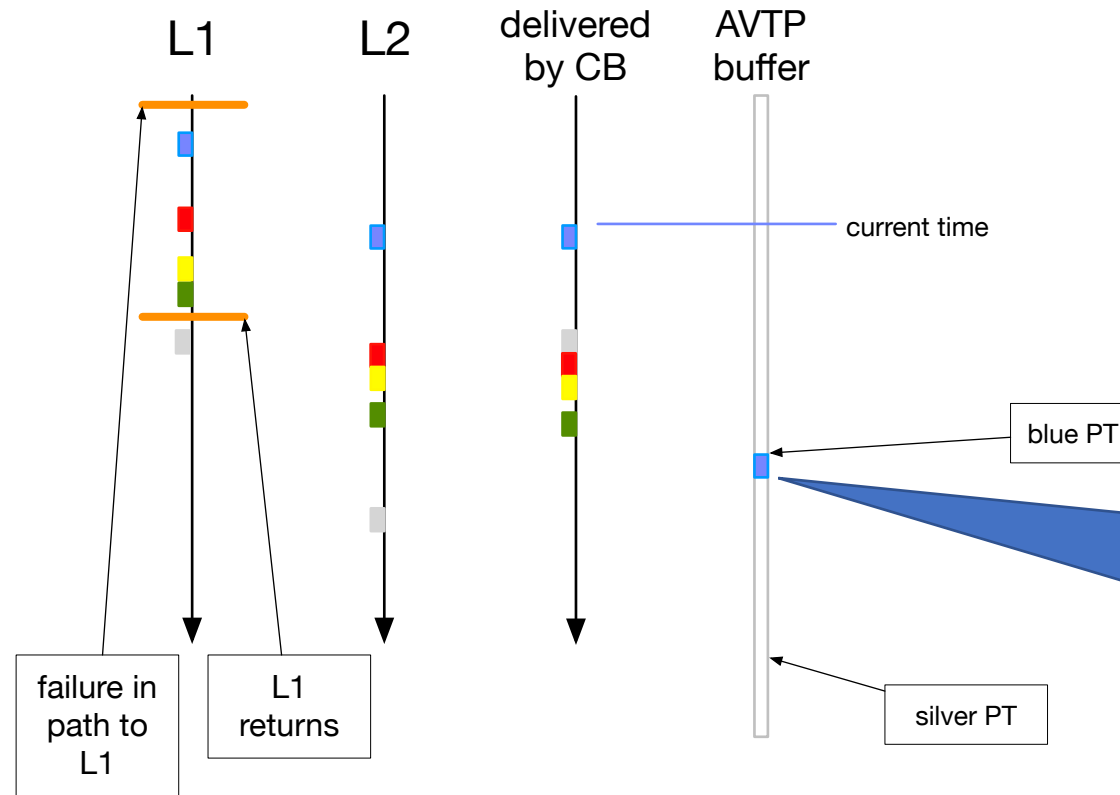


AVTP Has the Tools to Handle the Problem

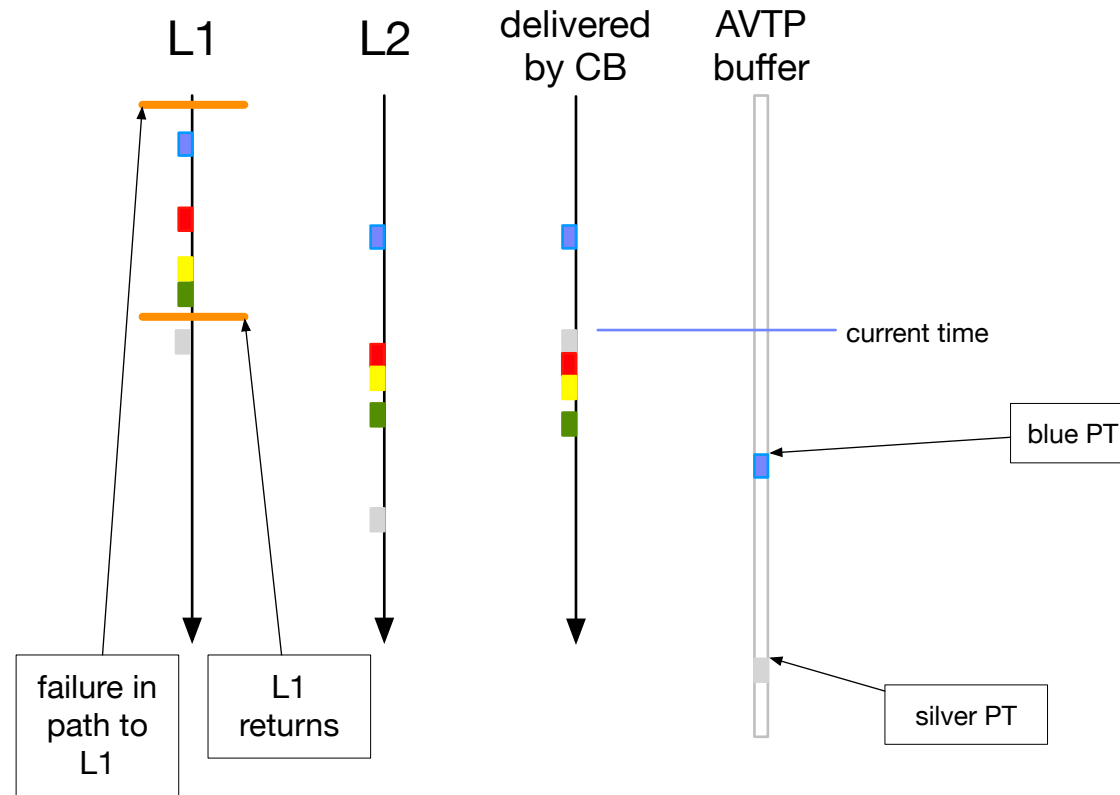
(With Some New Processing)



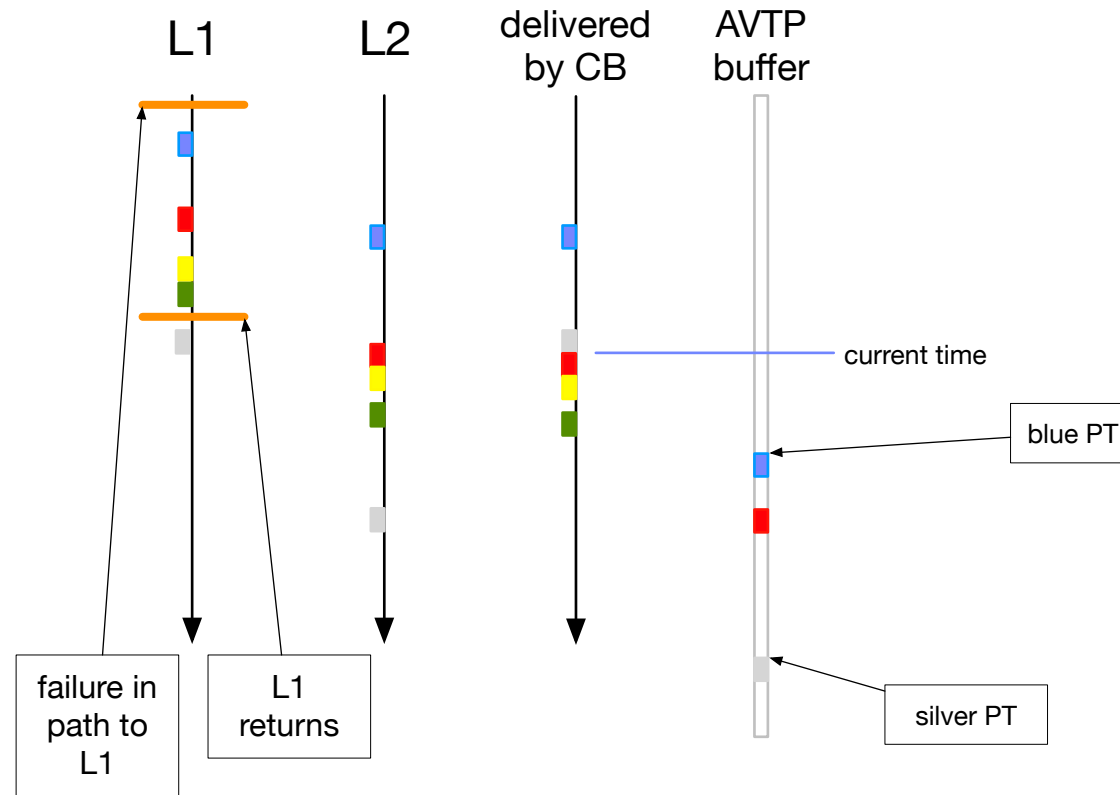
Put Blue PDU in it's "Reserved" Spot in Buffer



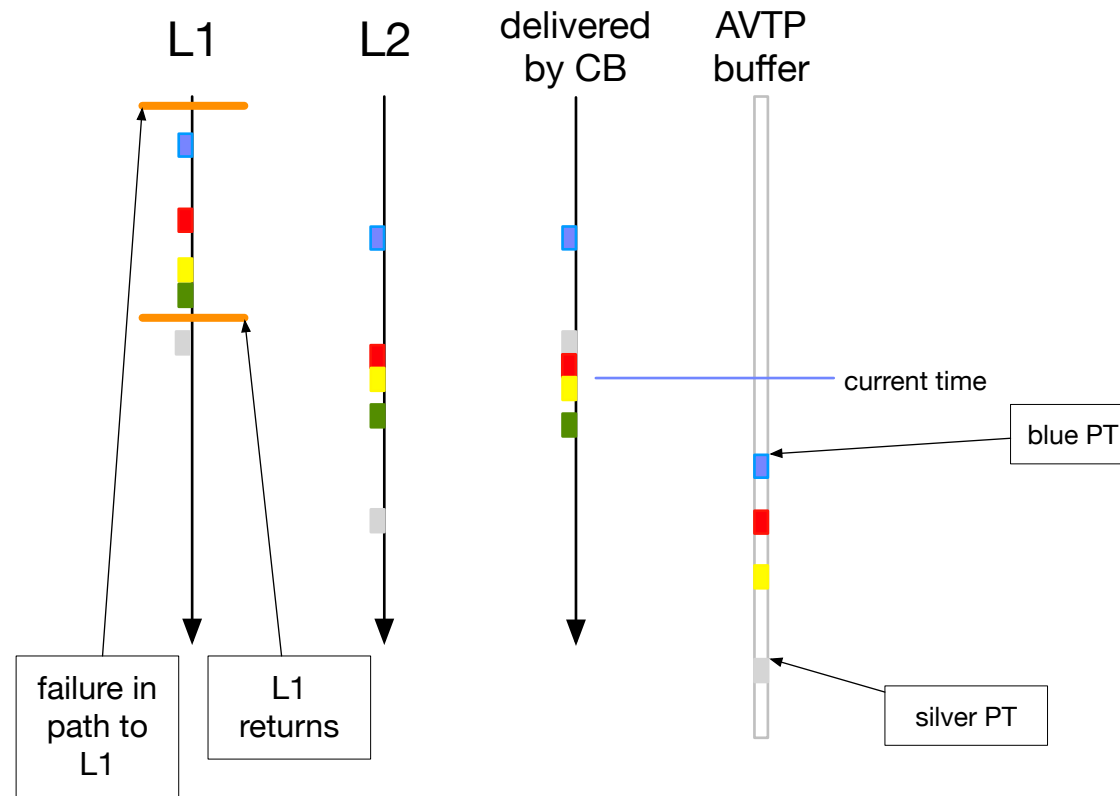
Same for Silver, even though it's Out-of-Order



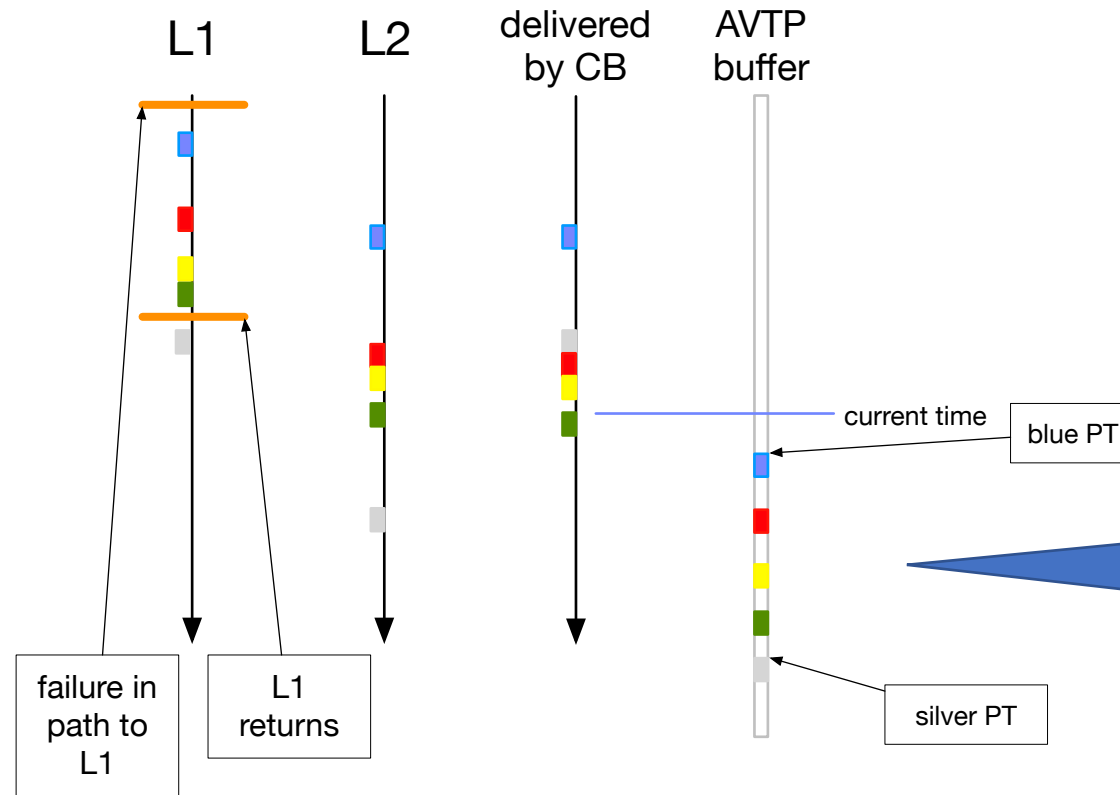
Same for the Red PDU



...And Yellow



...And Finally Green



The PDUs are back in order and on-time for distribution to the listener application.