



IEEE 1904 ANWG Opening Report

Glen Kramer, ANWG Chair
glen.kramer@ieee.org

- Please, state
 - Your name
 - Your affiliation

IEEE SA Standards Board Operations manual

5.3.3.1 Disclosure of affiliation

Each participant's affiliation shall be disclosed at any working group or project meeting. The chair or the chair's delegate shall inform the meeting of the requirement for disclosure of affiliation (see 5.2.1.5 of the *IEEE-SA Standards Board Bylaws*). This shall be via a sign-in (e.g., sign-in sheet, electronic sign-in, verbal disclosure, or electronic communication) that provides for disclosure of employer and any other affiliation, a reminder of the definition of affiliation, and possible penalties for non-compliance.

...

The minutes of each working group or project meeting shall record a list of attendees and the disclosed affiliation of each attendee.

Executive Secretary Report

- ☐ Membership Updates
- ☐ Establishment of Quorum

1904.1-REV WG Ballot Results

	Initial Ballot (D2.0)	1 st Recirc (D2.1)	2 nd Recirc (D2.2)	3 rd Recirc (D2.3)
Total Voters	18	18	18	
Approved	14	15	14	
Disapproved (with comments)	1	0	1	
Disapproved (without comments)	0	0	0	
Abstained	0	0	0	
Total Returns	15	15	15	
Response Ratio (Req. $\geq 75\%$)	83.33%	83.33%	83.33%	
Abstention Ratio (Req. $< 30\%$)	0%	0%	0%	
Approval Ratio (Req. $\geq 2/3$)	93.33%	100%	93.33%	

1904.1-REV Comment distribution

	Initial Ballot (D2.0)	1st Recirc (D2.1)	2nd Recirc (D2.2)	
Editorial (E)	19	0	4	
Editorial-Required (ER)	2	0	-	
Technical (T)	24	2	-	
Technical-Required (TR)	6	0	2	
Total	51	2	6	

□ **RMTF**

- Resolve 6 comments
- Produce D2.3 after the meeting
- Liaison to CableLabs to share D2.3

□ **1904.2 TF**

- Discuss Ethertype assignment
- Discuss timeline

□ **1904.3 TF**

- Review 10 technical contributions
- Accept baseline proposals
- Action items for the next meeting

Motion to Approve the Agenda

Motion #1

☐ **Approve the agenda for the April 2016 meeting as presented in anwg_1604_agenda.pdf**

– Moved:

– Seconded:

(Procedural, required > 50%)

Approval of Last Meeting's Minutes

Motion #2

- ☐ Approve minutes of February 2016 meeting as recorded in **anwg_1602_minutes_unapproved.pdf**.
- ☐ Post the approved minutes on the WG website as **anwg_1602_minutes_approved.pdf**

– Moved:

– Seconded:

(Procedural, required > 50%)



Call for Patents

Instructions for the WG Chair

The IEEE-SA strongly recommends that at each WG meeting the chair or a designee:

- **Show slides #1 through #4 of this presentation**
- **Advise the WG attendees that:**
 - The IEEE's patent policy is described in Clause 6 of the *IEEE-SA Standards Board Bylaws*;
 - Early identification of patent claims which may be essential for the use of standards under development is strongly encouraged;
 - There may be Essential Patent Claims of which the IEEE is not aware. Additionally, neither the IEEE, the WG, nor the WG chair can ensure the accuracy or completeness of any assurance or whether any such assurance is, in fact, of a Patent Claim that is essential for the use of the standard under development.
- **Instruct the WG Secretary to record in the minutes of the relevant WG meeting:**
 - That the foregoing information was provided and that slides 1 through 4 (and this slide 0, if applicable) were shown;
 - That the chair or designee provided an opportunity for participants to identify patent claim(s)/patent application claim(s) and/or the holder of patent claim(s)/patent application claim(s) of which the participant is personally aware and that may be essential for the use of that standard
 - Any responses that were given, specifically the patent claim(s)/patent application claim(s) and/or the holder of the patent claim(s)/patent application claim(s) that were identified (if any) and by whom.
- The WG Chair shall ensure that a request is made to any identified holders of potential essential patent claim(s) to complete and submit a Letter of Assurance.
- It is recommended that the WG chair review the guidance in *IEEE-SA Standards Board Operations Manual* 6.3.5 and in FAQs 14 and 15 on inclusion of potential Essential Patent Claims by incorporation or by reference.

Note: **WG** includes Working Groups, Task Groups, and other standards-developing committees with a PAR approved by the IEEE-SA Standards Board.



Participants, Patents, and Duty to Inform

All participants in this meeting have certain obligations under the IEEE-SA Patent Policy.

- Participants [Note: Quoted text excerpted from IEEE-SA Standards Board Bylaws subclause 6.2]:
 - “Shall inform the IEEE (or cause the IEEE to be informed)” of the identity of each “holder of any potential Essential Patent Claims of which they are personally aware” if the claims are owned or controlled by the participant or the entity the participant is from, employed by, or otherwise represents
 - “Should inform the IEEE (or cause the IEEE to be informed)” of the identity of “any other holders of potential Essential Patent Claims” (that is, third parties that are not affiliated with the participant, with the participant’s employer, or with anyone else that the participant is from or otherwise represents)
- The above does not apply if the patent claim is already the subject of an Accepted Letter of Assurance that applies to the proposed standard(s) under consideration by this group
- Early identification of holders of potential Essential Patent Claims is strongly encouraged
- No duty to perform a patent search

Patent Related Links

All participants should be familiar with their obligations under the IEEE-SA Policies & Procedures for standards development.

Patent Policy is stated in these sources:

IEEE-SA Standards Boards Bylaws

[*http://standards.ieee.org/develop/policies/bylaws/sect6-7.html#6*](http://standards.ieee.org/develop/policies/bylaws/sect6-7.html#6)

IEEE-SA Standards Board Operations Manual

[*http://standards.ieee.org/develop/policies/opman/sect6.html#6.3*](http://standards.ieee.org/develop/policies/opman/sect6.html#6.3)

Material about the patent policy is available at

[*http://standards.ieee.org/about/sasb/patcom/materials.html*](http://standards.ieee.org/about/sasb/patcom/materials.html)

If you have questions, contact the IEEE-SA Standards Board Patent Committee Administrator at patcom@ieee.org or visit [*http://standards.ieee.org/about/sasb/patcom/index.html*](http://standards.ieee.org/about/sasb/patcom/index.html)

This slide set is available at
[*https://development.standards.ieee.org/myproject/Public/mytools/mob/slideset.ppt*](https://development.standards.ieee.org/myproject/Public/mytools/mob/slideset.ppt)



Call for Potentially Essential Patents

- If anyone in this meeting is personally aware of the holder of any patent claims that are potentially essential to implementation of the proposed standard(s) under consideration by this group and that are not already the subject of an Accepted Letter of Assurance:
 - Either speak up now or
 - Provide the chair of this group with the identity of the holder(s) of any and all such claims as soon as possible or
 - Cause an LOA to be submitted

Other Guidelines for IEEE WG Meetings

- **All IEEE-SA standards meetings shall be conducted in compliance with all applicable laws, including antitrust and competition laws.**
 - **Don't discuss the interpretation, validity, or essentiality of patents/patent claims.**
 - **Don't discuss specific license rates, terms, or conditions.**
 - Relative costs, including licensing costs of essential patent claims, of different technical approaches may be discussed in standards development meetings.
 - Technical considerations remain primary focus
 - **Don't discuss or engage in the fixing of product prices, allocation of customers, or division of sales markets.**
 - **Don't discuss the status or substance of ongoing or threatened litigation.**
 - **Don't be silent if inappropriate topics are discussed ... do formally object.**

See *IEEE-SA Standards Board Operations Manual*, clause 5.3.10 and “Promoting Competition and Innovation: What You Need to Know about the IEEE Standards Association's Antitrust and Competition Policy” for more details.



Project Information and Status

- ☐ No audio or video recording
- ☐ No photography
- ☐ No job recruiting
- ☐ No product pitches
- ☐ No corporate pitches
- ☐ No prices
 - This includes costs, ASPs, etc. no matter what the currency
- ☐ No restrictive notices

- ☐ Attendance of the press should be announced

- ❑ Located at <http://www.ieee1904.org/>
 - Archived technical contributions and reflector messages are public
- ❑ ANWG Password-protected area
 - Standard drafts are password-protected (IEEE SA rules)
 - All online submission forms are password-protected to avoid spam.
 - TF2: http://www.ieee1904.org/private/2/tf2_presentproc.shtml
 - TF3: http://www.ieee1904.org/private/3/tf3_presentproc.shtml
 - RMTF: http://www.ieee1904.org/private/revision/rmtf_maint_request.shtml
 - The same username/password for all task forces under 1904 WG
 - Username: * * * *
 - Password: * * * *

❑ 1904 WG Reflector

- Used for general discussions/announcements. **Everyone MUST subscribe!!!**
- Archive is public: http://www.ieee1904.org/wg_pub_archive.shtml
- Subscription instructions: http://www.ieee1904.org/wg_reflector.shtml

❑ 1904.2 TF Reflector

- Used for 1904.2 (Universal Management Tunnel) technical discussions
- Archive is public: <http://www.ieee1904.org/2/email/index.html>
- Subscription instructions: http://www.ieee1904.org/2/tf2_reflector.shtml

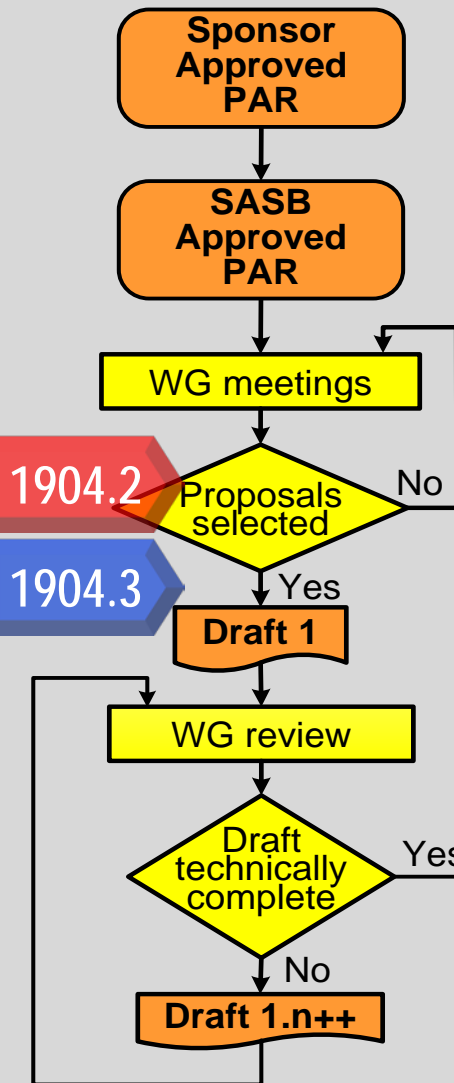
❑ 1904.3 TF Reflector

- Used for 1904.3 (Radio-over-Ethernet) technical discussions
- Archive is public: <http://www.ieee1904.org/3/email/index.html>
- Subscription instructions: http://www.ieee1904.org/3/tf3_reflector.shtml

❑ RMTF Reflector

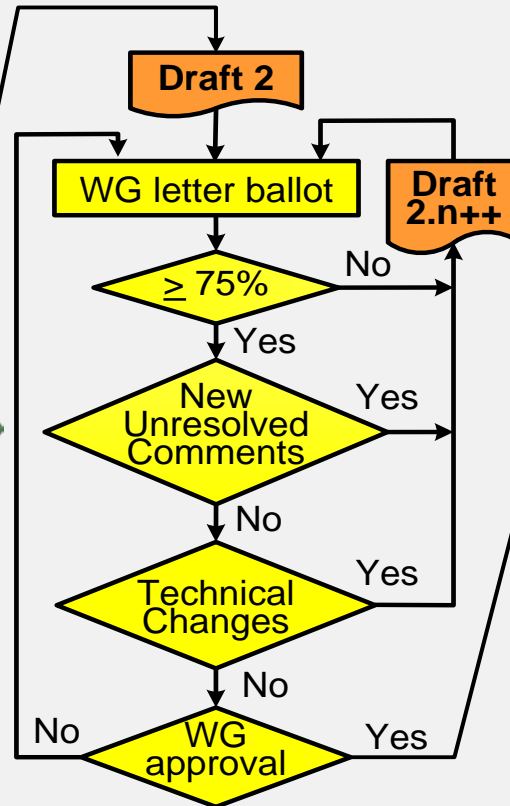
- Used for Revision & Maintenance technical discussions
- Archive is public: <http://www.ieee1904.org/3/email/index.html>
- Subscription instructions: http://www.ieee1904.org/revision/rmtf_reflector.shtml

Standardization Status

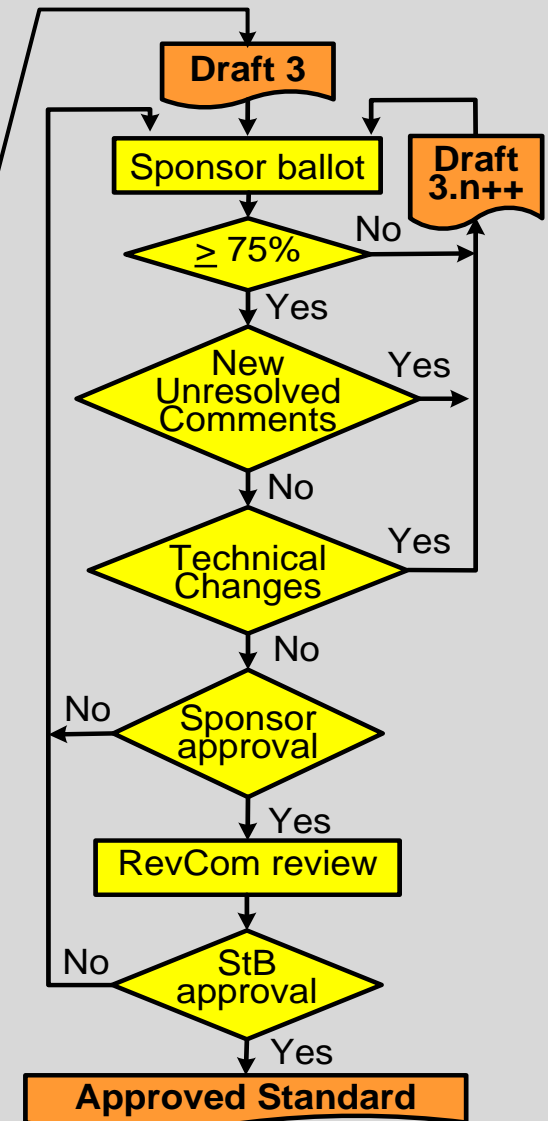


Working Group
Review

RMTF



Working Group
Ballot



Sponsor Ballot 19

2016 Meeting Calendar



January						
S	M	T	W	T	F	S
					1	2
3	4	5	6	7	8	9
10	11	12	13	14	15	16
17	18	19	20	21	22	23
24	25	26	27	28	29	30
31						

February						
S	M	T	W	T	F	S
	1	2	3	4	5	6
7	8	9	10	11	12	13
14	15	16	17	18	19	20
21	22	23	24	25	26	27
28	29					

March						
S	M	T	W	T	F	S
		1	2	3	4	5
6	7	8	9	10	11	12
13	14	15	16	17	18	19
20	21	22	23	24	25	26
27	28	29	30	31		

ANWG Window						
2/15-2/19						
4/25-4/29						
6/20-6/24						
8/22-8/26						
10/17-10/21						
12/12-12/16						

April						
S	M	T	W	T	F	S
					1	2
3	4	5	6	7	8	9
10	11	12	13	14	15	16
17	18	19	20	21	22	23
24	25	26	27	28	29	30

May						
S	M	T	W	T	F	S
1	2	3	4	5	6	7
8	9	10	11	12	13	14
15	16	17	18	19	20	21
22	23	24	25	26	27	28
29	30	31				

June						
S	M	T	W	T	F	S
			1	2	3	4
5	6	7	8	9	10	11
12	13	14	15	16	17	18
19	20	21	22	23	24	25
26	27	28	29	30		

802.3						
1/18 – 1/22						
3/14 – 3/17						
5/23 – 5/27						
7/25 – 7/28						
9/? – 9/?						
11/7 – 11/10						

CableLabs						
2/9-2/12 - Winter Conference						
8/7-8/10 - Summer Conference						

IETF						
4/4 – 4/8						
7/18 – 7/22						
11/14 – 11/18						

July						
S	M	T	W	T	F	S
					1	2
3	4	5	6	7	8	9
10	11	12	13	14	15	16
17	18	19	20	21	22	23
24	25	26	27	28	29	30
31						

August						
S	M	T	W	T	F	S
	1	2	3	4	5	6
7	8	9	10	11	12	13
14	15	16	17	18	19	20
21	22	23	24	25	26	27
28	29	30	31			

September						
S	M	T	W	T	F	S
				1	2	3
4	5	6	7	8	9	10
11	12	13	14	15	16	17
18	19	20	21	22	23	24
25	26	27	28	29	30	

Conferences						
2/22-2/25 - Mobile World Congress						
3-20 – 3/24 - OFC						
4/16-4/21 - NAB Show						
5/16-5/18 - INTX (Cable Show)						
6/29-7/1 - Mobile World Congress						
9/19-9/21 - ECOC						
9/26-9/29 - SCTE Expo						
12/4-12/9 - Globecom						

October						
S	M	T	W	T	F	S
						1
2	3	4	5	6	7	8
9	10	11	12	13	14	15
16	17	18	19	20	21	22
23	24	25	26	27	28	29
30	31					

November						
S	M	T	W	T	F	S
		1	2	3	4	5
6	7	8	9	10	11	12
13	14	15	16	17	18	19
20	21	22	23	24	25	26
27	28	29	30			

December						
S	M	T	W	T	F	S
				1	2	3
4	5	6	7	8	9	10
11	12	13	14	15	16	17
18	19	20	21	22	23	24
25	26	27	28	29	30	31

Holidays						
Denmark -						
China -						
Israel -						
Japan -						
UK -						
US - 1/1, 5/30, 7/4, 9/5, 11/24-25, 12/24-31						

- ❑ February 29 – March 4 – **Teleconference**
- ❑ April 25-26 – **Broadcom, San Jose, CA**
- ❑ June – **1904.1+1904.2 – Teleconference?**
1904.3 – Face-to-face? (w/1914)?
- ❑ August – **TBD**
- ❑ October – **TBD**
- ❑ December– **TBD**



Thank You