

802.1AX Link Aggregation

802.1AX-Rev2-d0.1

Editor's Report

Version 1

Stephen Haddock

May 15, 2017

Draft 0.1

- Draft generated for first Task Force ballot
 - Change bars relative to draft 0.0 (merge of 802.1AX-2014 and 802.1AX-2014-Cor1-2017)
 - Bulk of changes in Clause 6. Other clauses, in particular Clause 9 (DRNI), have very few updates as of yet.
- Significant changes to Clause 6:
 - Replace Mux state machine with proposal from <http://www.ieee802.org/1/files/public/docs2017/ax-rev-seaman-wait-to-restore-0117-v01.pdf>
 - Integrate the per-Aggregation Port portions of Conversation-sensitive Distribution and Collection (CSDC) into existing LACP state machines.
 - Modify CSDC Update Mask state machine to correct behavior when defaulted, specify behavior when management changes administrative variables, and (hopefully) clarify information flow.
 - Added informative text on how CSDC works (and a little on why you might want it).

Clause 6 changes:

- Changes don't affect "normal" operation.
 - Most changes specify response to unusual events such as administrative changes on an active LAG.
 - Explicit specification of some things that were left as "exercises for the reader".

Example: Merging “Verification machine” into Rx machine

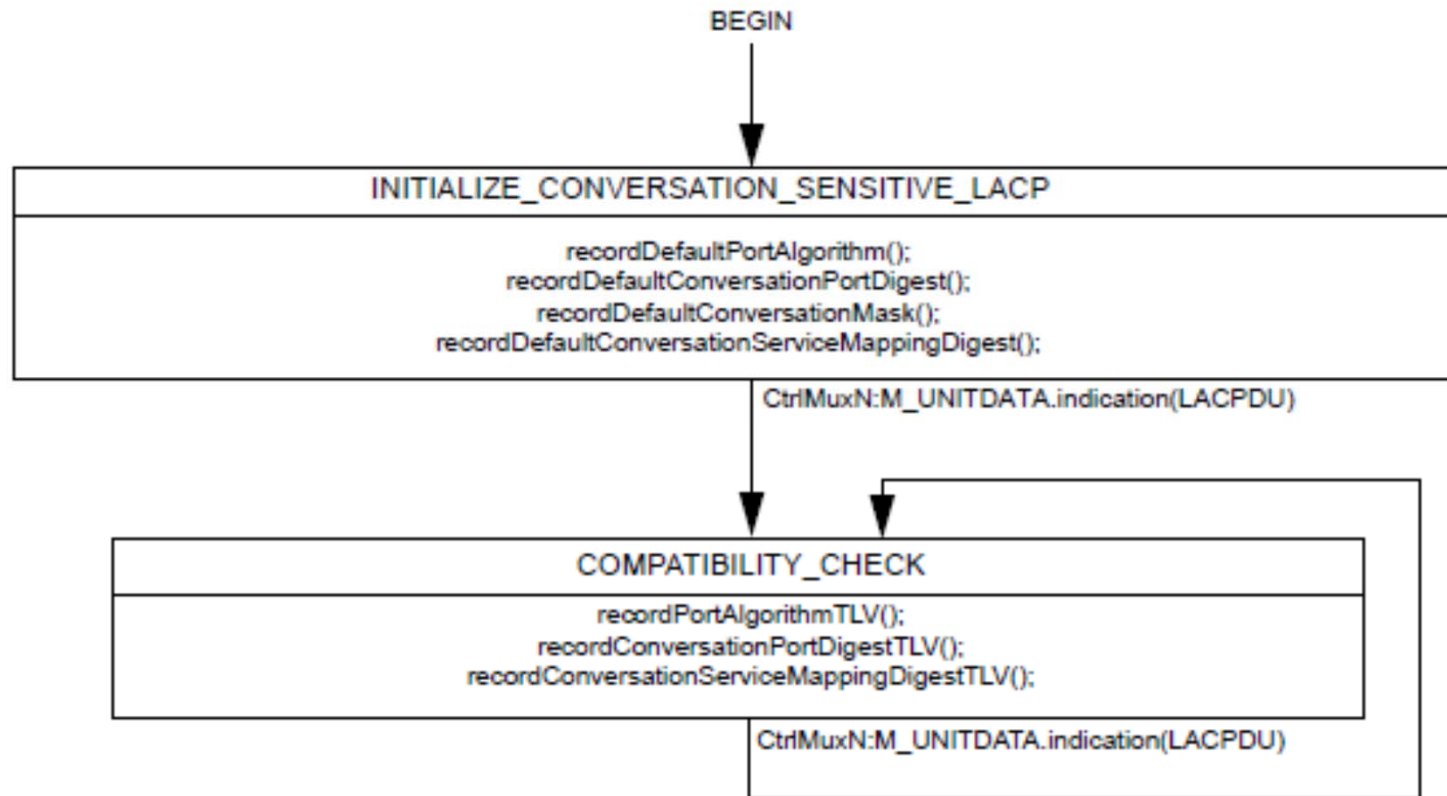


Figure 6-30—Verification state diagram

Example: Merging “Verification machine” into Receive machine

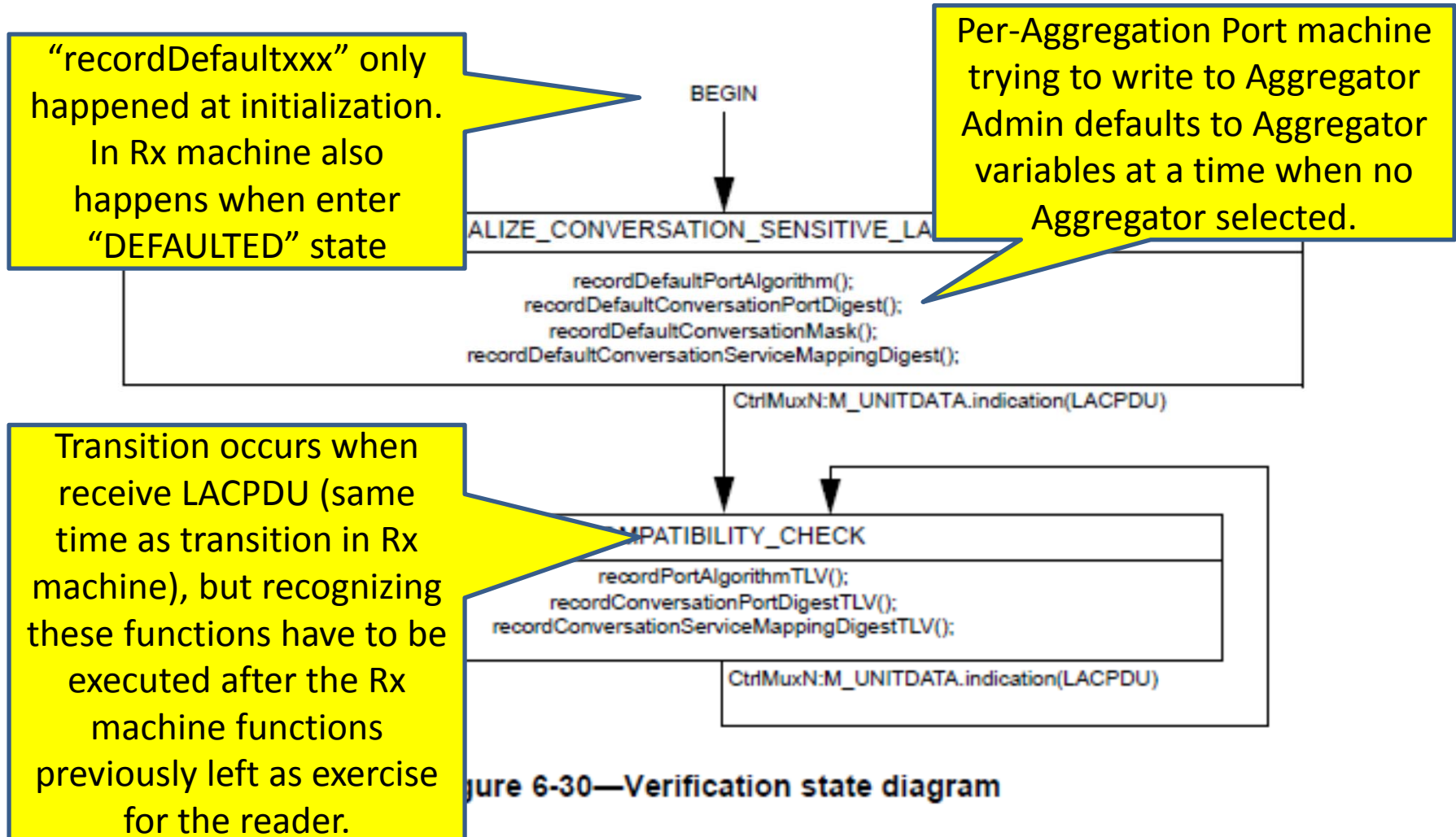


Figure 6-30—Verification state diagram

Update Mask Machine

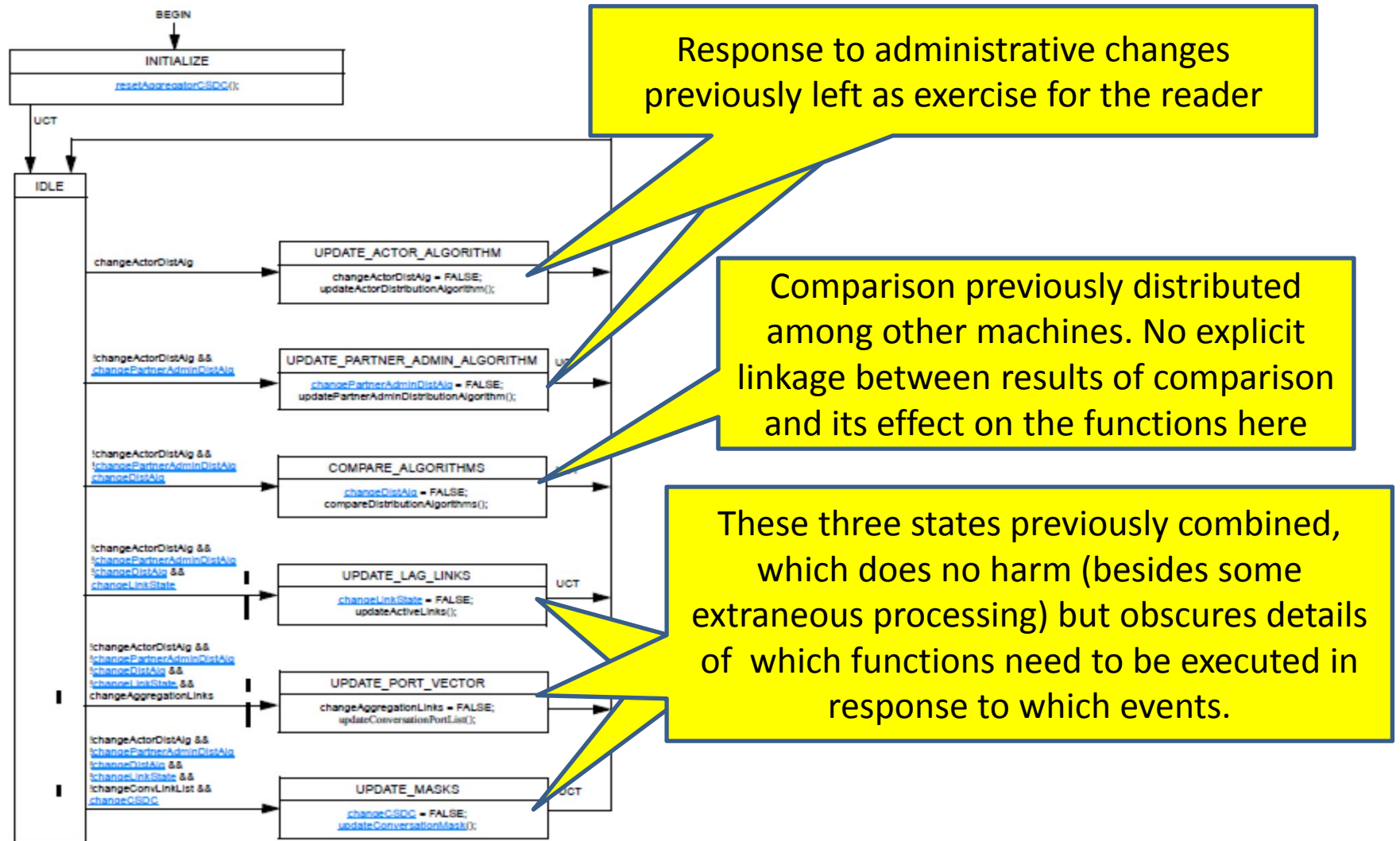


Figure 6-29—Update Mask state diagram

Where to start review?

- Read the “Editor’s Introduction to Draft 0.1” on page vi
- If you are somewhat familiar with Link Aggregation:
 - i.e. know basically what is meant by “Aggregation Port”, “Aggregator”, “Distributing” and “Collecting”
 - Start with Clause 6.6. This has new informative text on how “Conversation-sensitive Distribution and Collection” is supposed to work. Hopefully makes it easier to understand basic concepts rather than have to deduce them from variable definitions and state machines.
- Otherwise:
 - Review 6.1 (through Figure 6-2) first. Then review 6.2 (through 6.2.4, then skip to 6.2.8 and 6.2.9).
 - For an overview of Link Aggregation Control and the protocol review 6.3 and 6.4.3.

Backup Slides