

Operational Network Management for IEC/IEEE 60802

NETCONF Usage

Author:

Nemanja Stamenic, Siemens AG

IEEE 802.1 Plenary Session, March 2022

The following figure shows the steps that are typically performed in the scope of the CUC-CNC interaction.

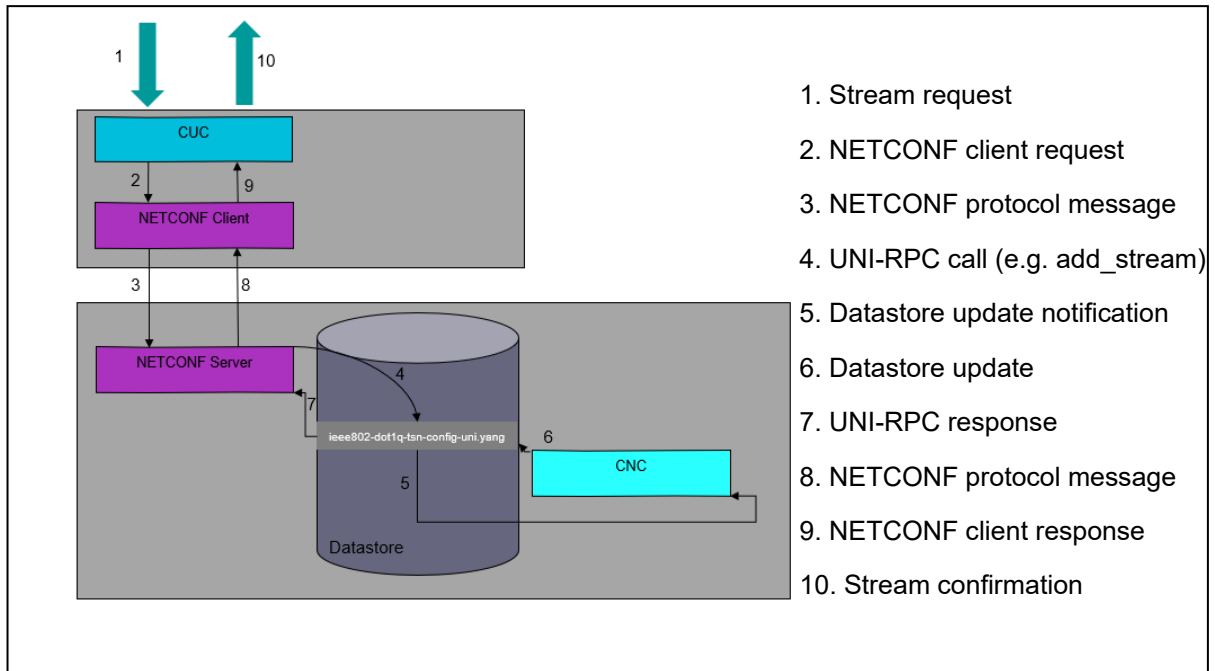


Figure 28 – UNI Service Model

After the computation of the paths and the scheduling and/or shaping configuration has been done, the CNC configures the IA-Stations via NETCONF client. The typical steps that are performed in this process are shown in the figure below.

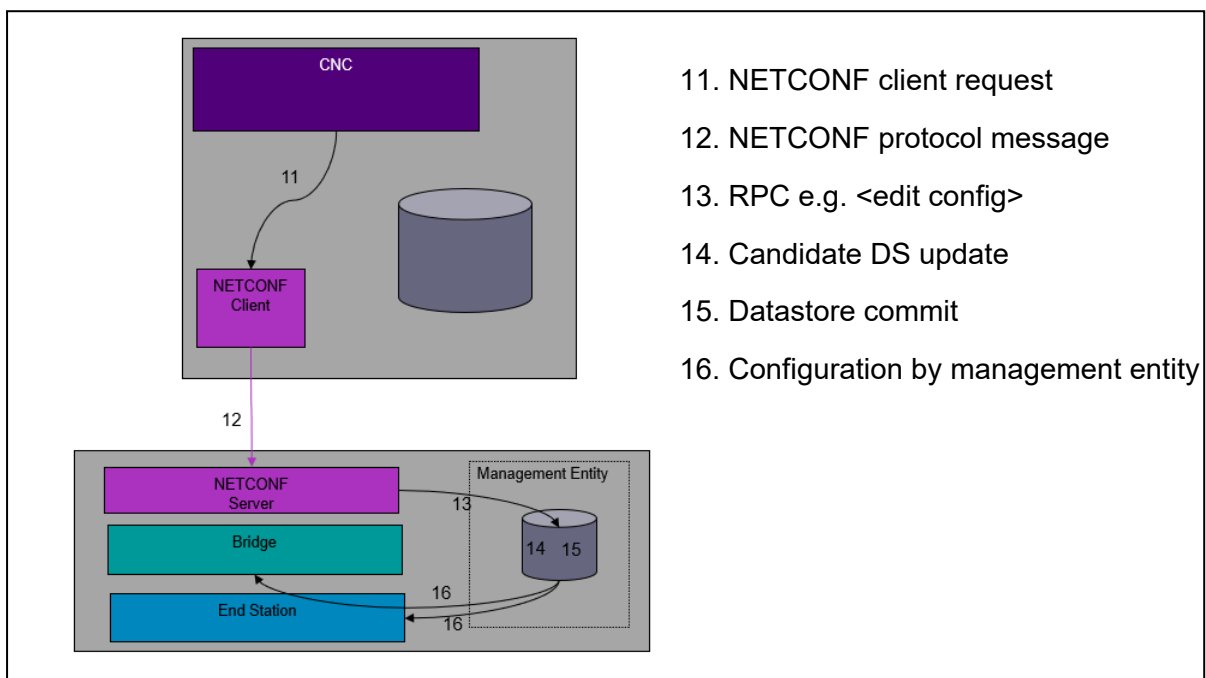


Figure 29 – CNC Southbound

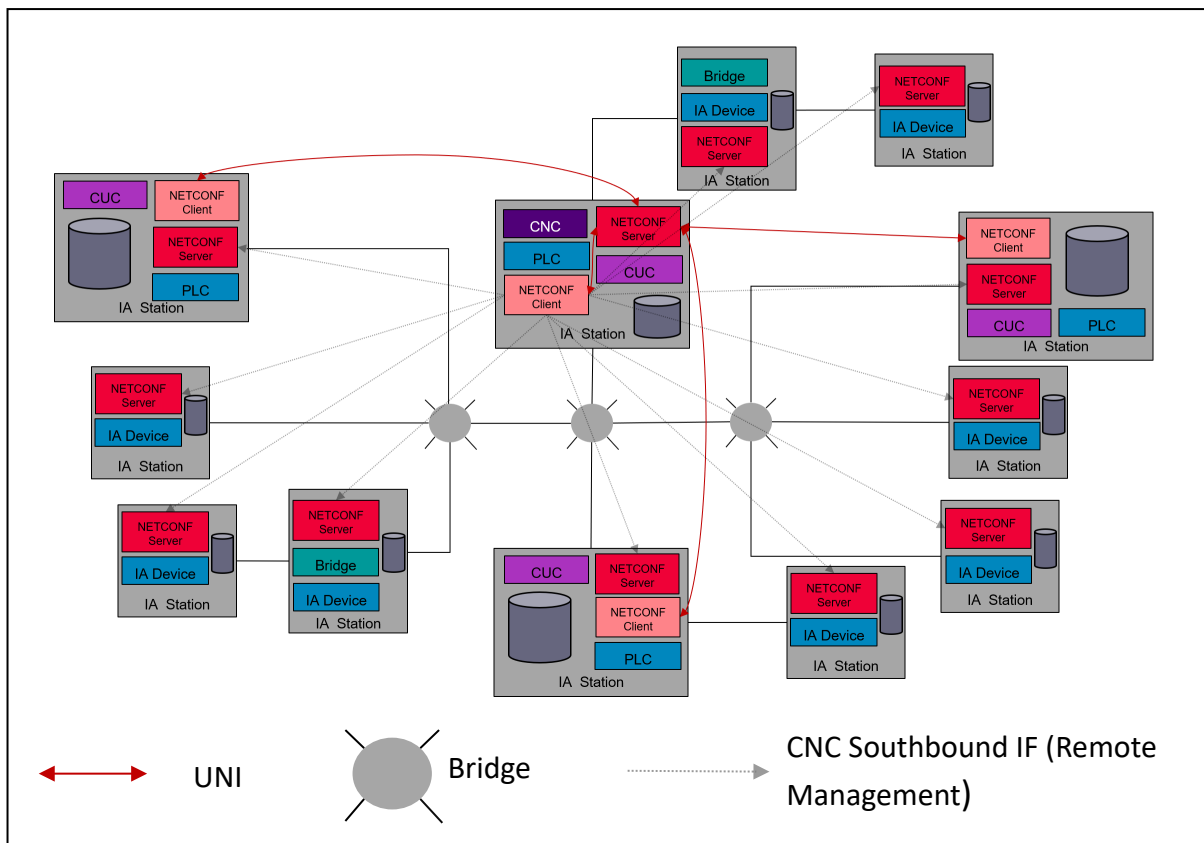


Figure 30 – NETCONF USAGE

Instances of NETCONF servers and clients within a TSN domain are shown in the Figure 30. IA-stations that contain a CNC and/or CUC entity contain both a NETCONF server and a NETCONF client. All other IA stations contain a NETCONF server. NETCONF client at the CUC side is needed for the UNI. NETCONF server at the CNC side is needed to accommodate UNI as well as remote network management of the end stations and bridges that are contained in the same chassis as the CNC entity. The NETCONF client on the CNC side is needed for the southbound interface of the CNC i.e. for the remote management of the bridges and end stations in the scope of stream configuration. All IA-stations must have a NETCONF server to make remote management possible. The NETCONF server used by the CNC serves multiple NETCONF Clients (CUCs) within a single TSN domain whose requests clients can occur simultaneously.