

Category 8 Structured Cabling Channel Demonstration by Commscope

Wayne Larsen

Supporters

- Paul Kish – Belden
- George Zimmerman – CME Consulting (Commscope)
- Mike Grimwood – Broadcom
- Peter Wu – Marvell
- Andy Jimenez – Anixter
- Antoine Pelletier – Intertek
- Sterling Vaden – Optical Cable Corporation
- Arvind Patel – Psiber
- Harshang Pandya – Psiber
- Gavin Parnaby - Marvell

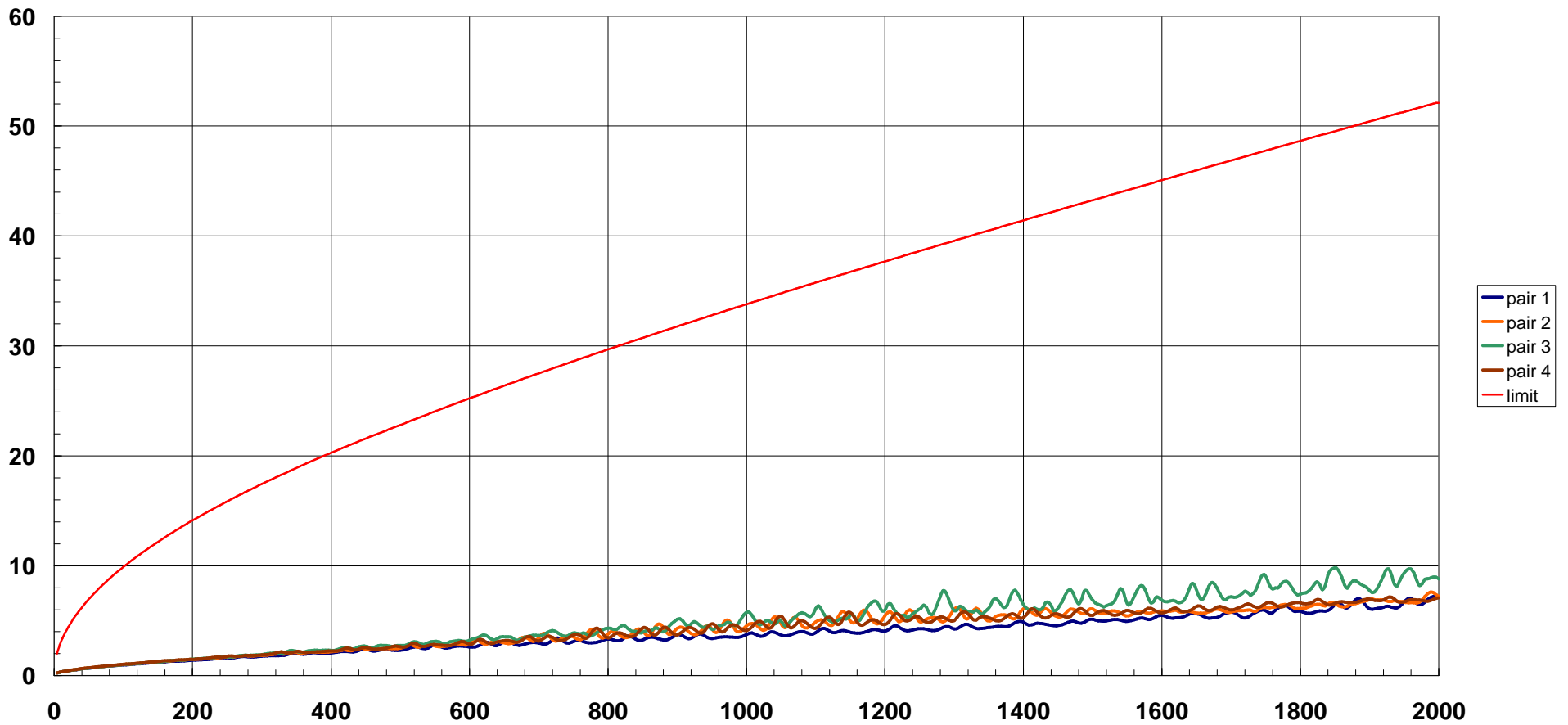
Commscope Cat 8 Cabling

- This contribution is being made to show the technical feasibility of a category 8 cabling system
- Broad market potential and compatibility are supported by the RJ-45 connector
- These complete cabling channels consist of the following
 - One long and one short channel
 - Horizontal cable
 - Two connectors
 - A patch cord at each end of each channel

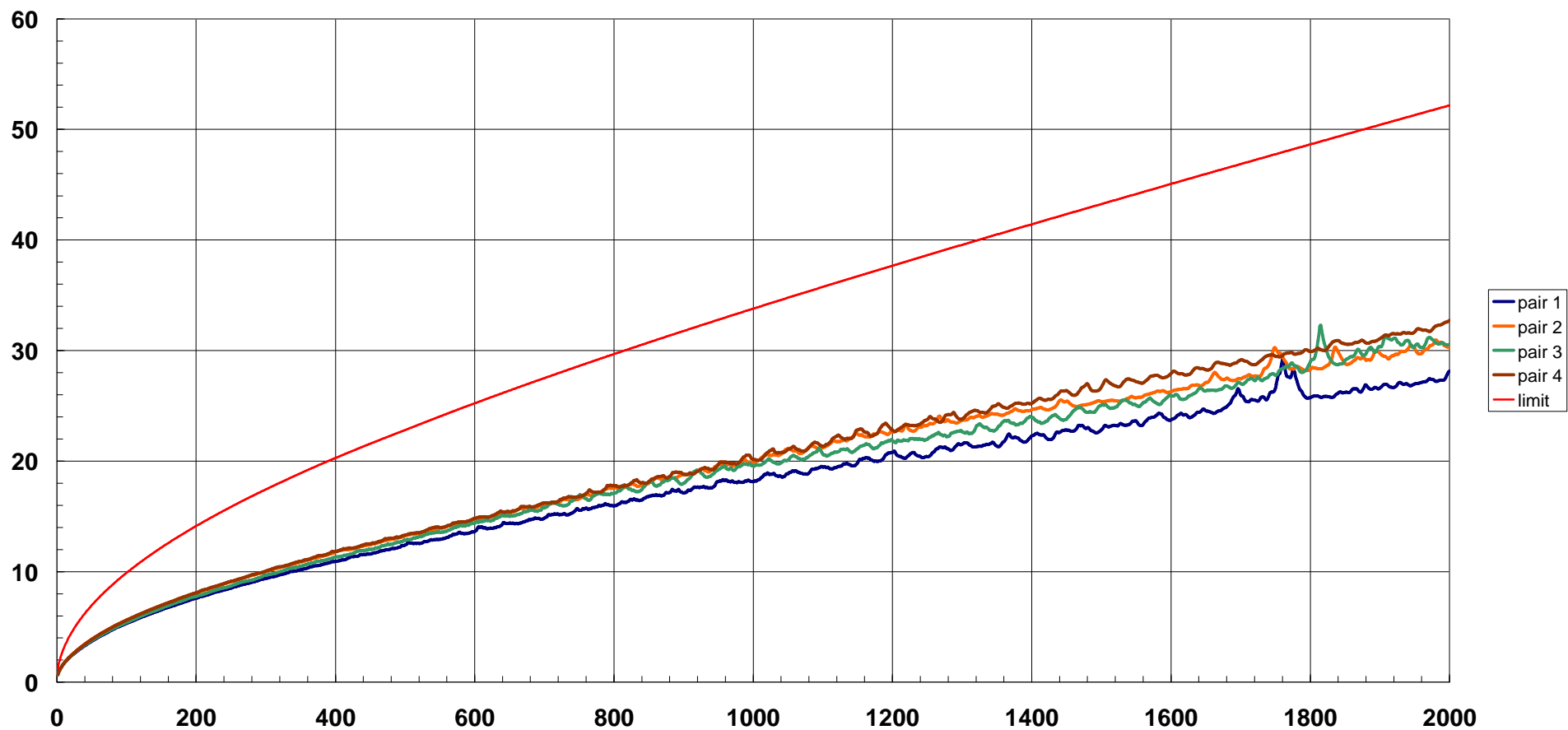
Commscope Cat 8 Cabling

- Differences from the previous contribution
 - Complete channel, not only permanent link
 - All components from the same vendor
 - Demonstrates existence of two connecting hardware manufacturers

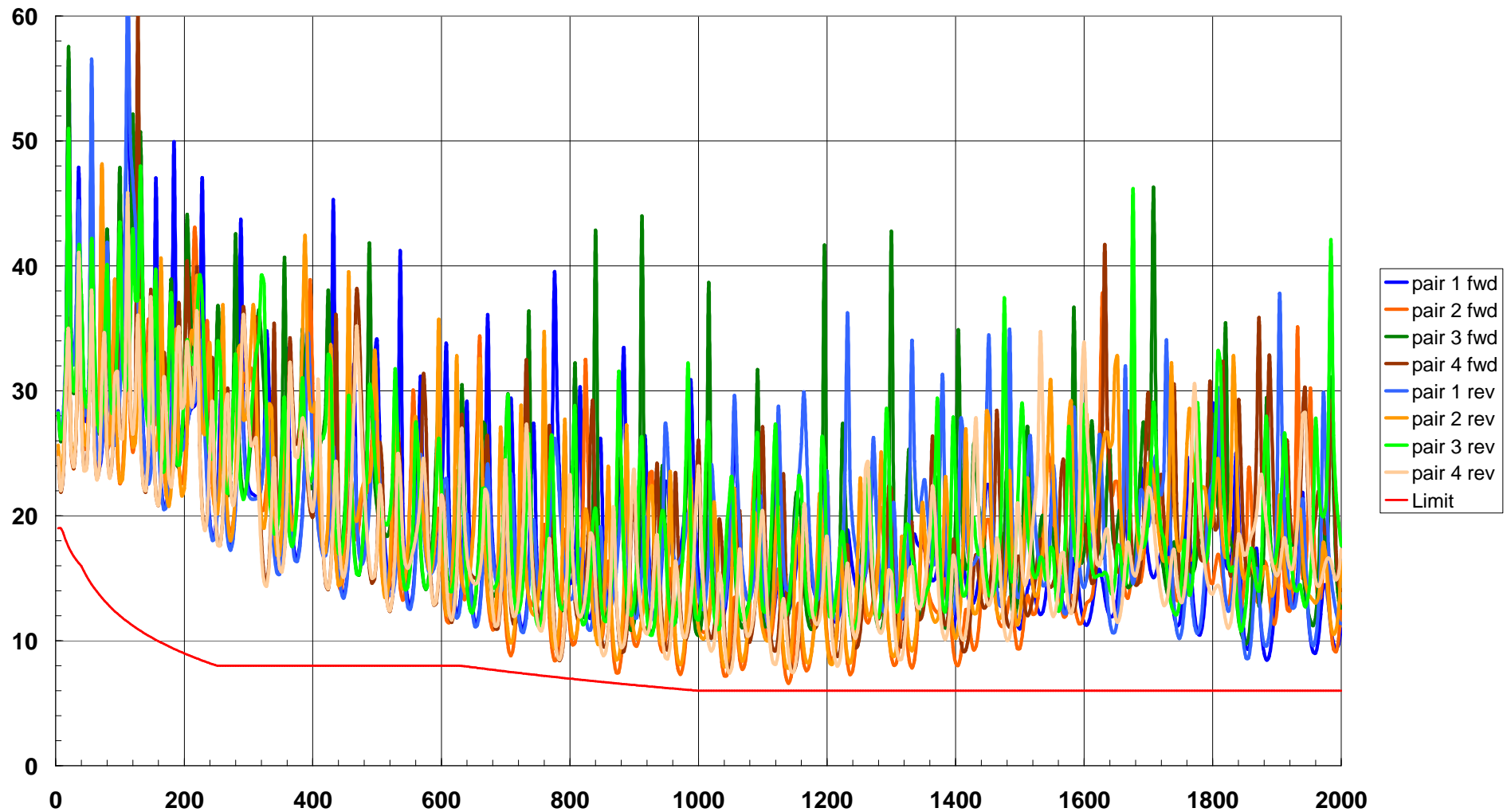
Commscope short channel IL



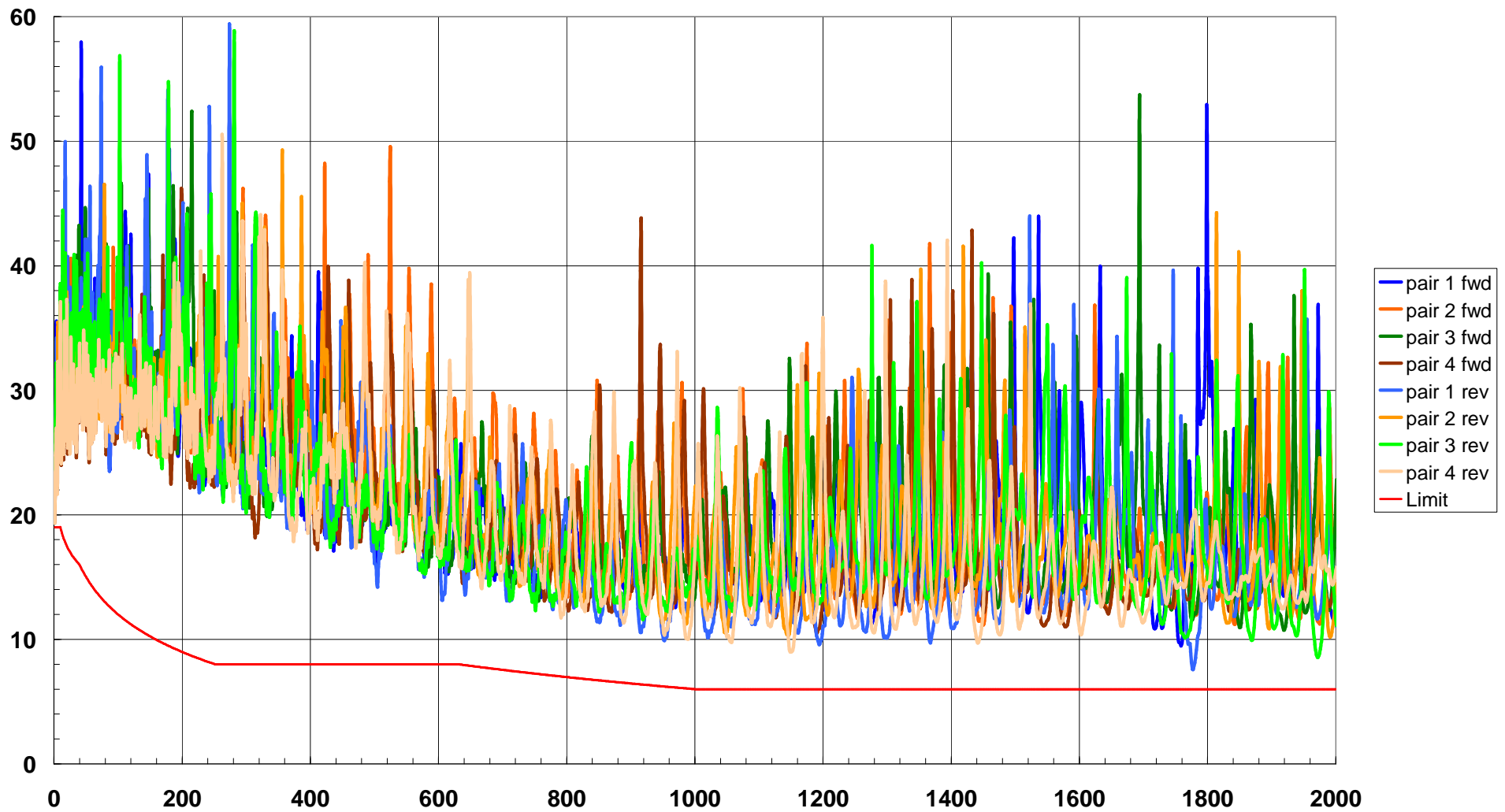
Commscope long channel insertion loss



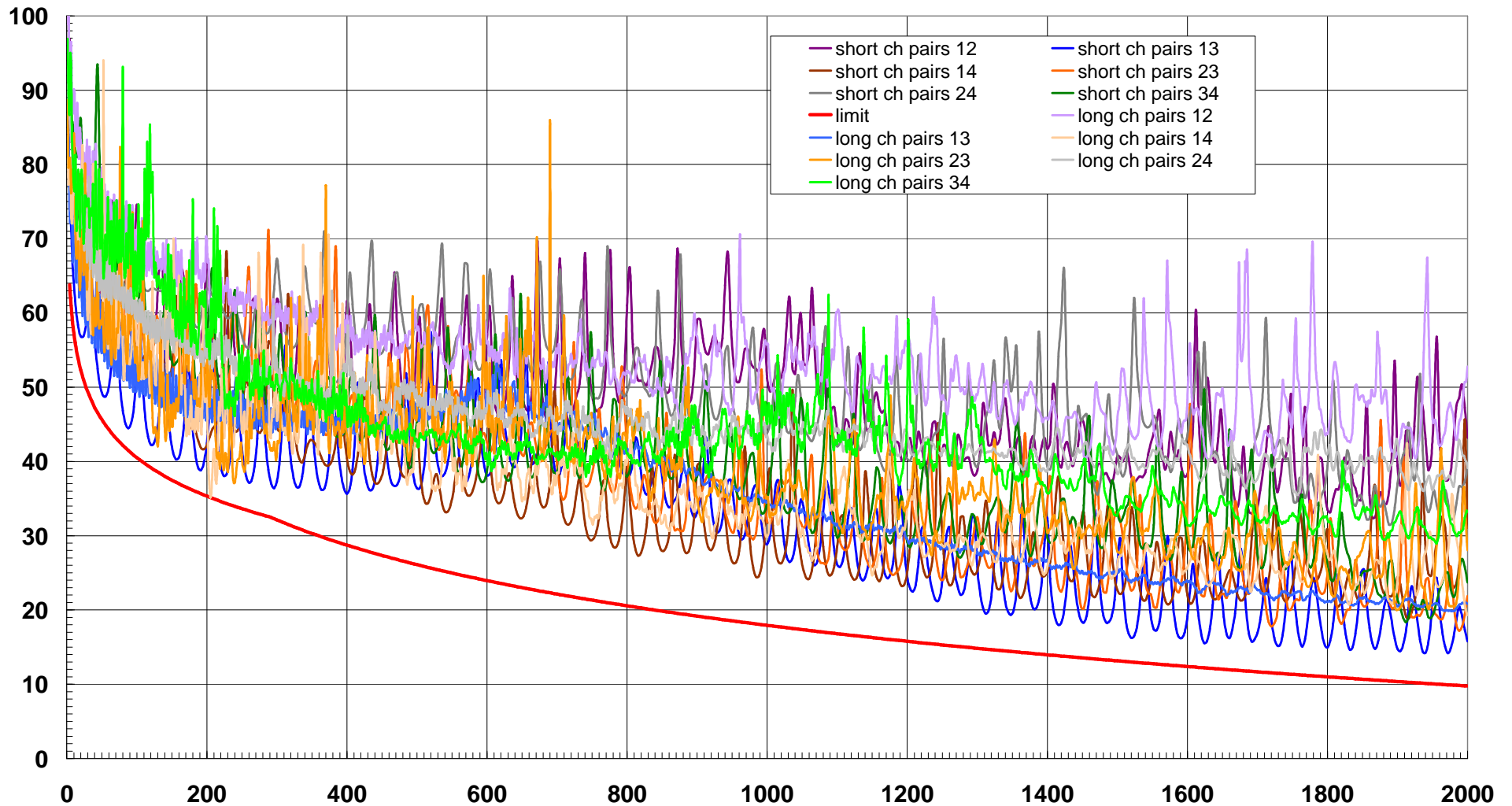
Commscope short channel return loss



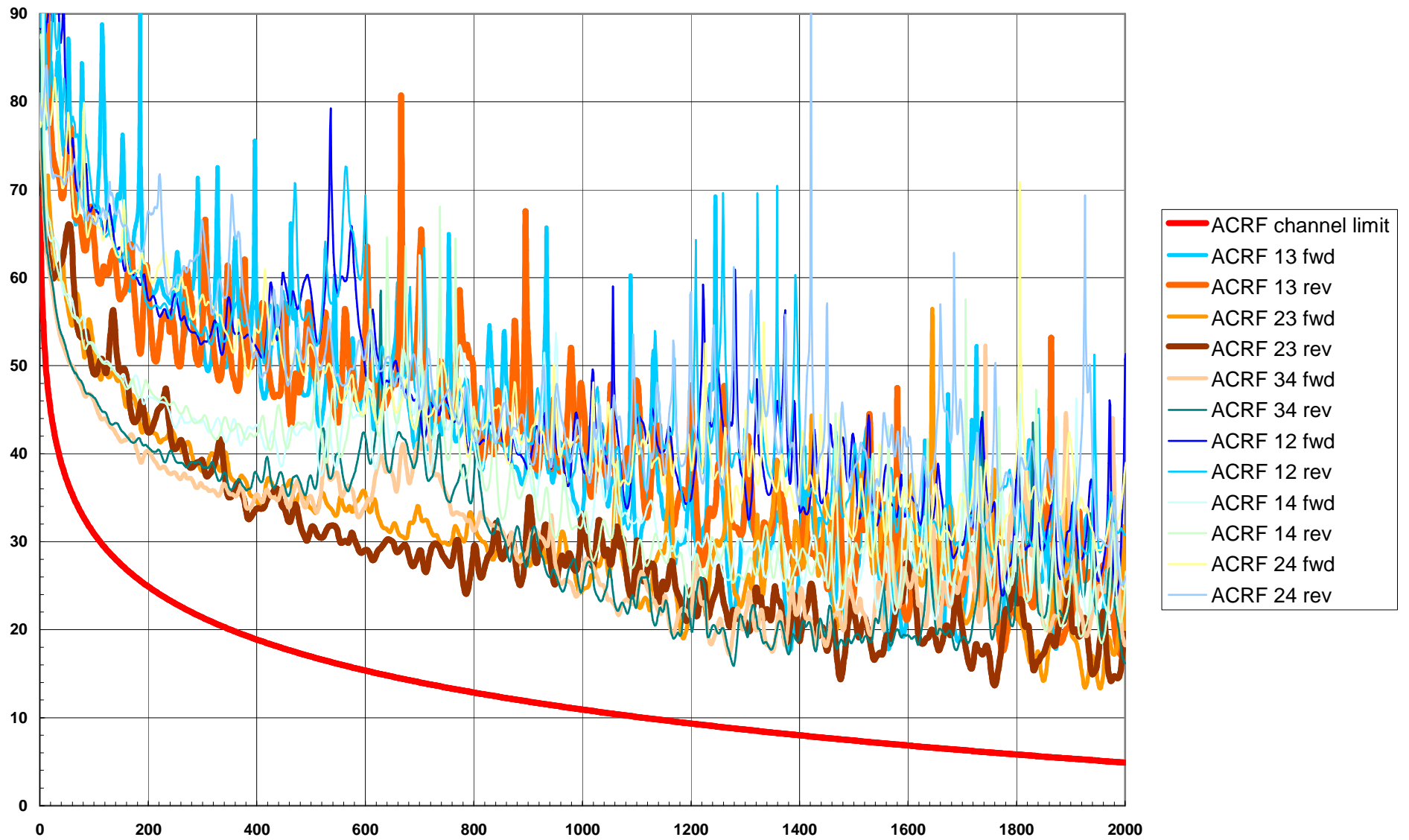
Commscope long channel return loss



NEXT - Commscope channels

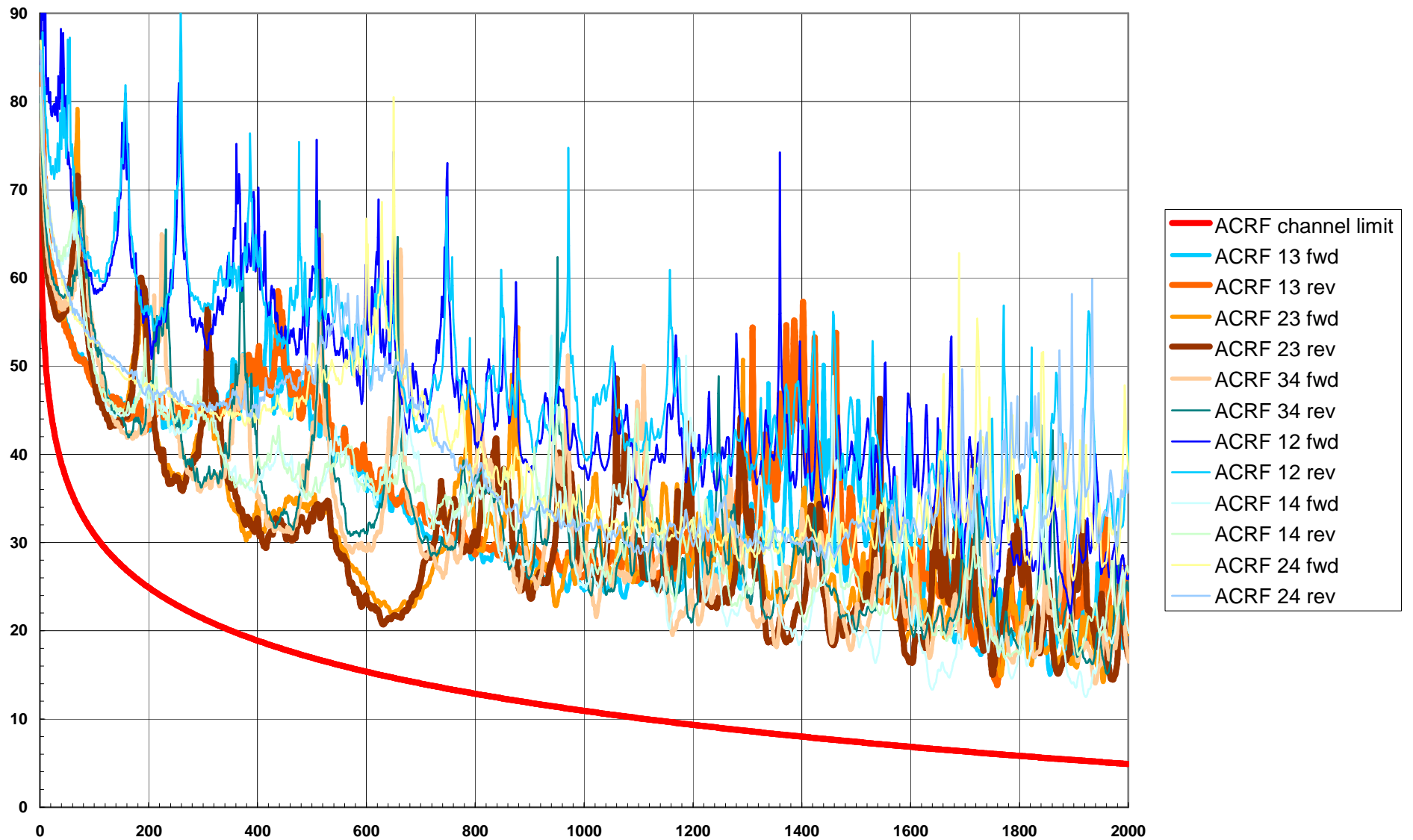


ACRF Commscope short channel



IEEE NGBASE-T SG January 2013
Larsen_01_0113_NGBT

ACRF Commscope short channel



IEEE NGBASE-T SG January 2013
Larsen_01_0113_NGBT

Conclusions

- Verification that the channel models are correct, based on another manufacturer's connecting hardware
- So far two cabling companies have demonstrated prototype category 8 connectors and one has demonstrated category 8 cable
- These designs are expected to improve in the future leading to fully meeting all requirements in production
- Technical feasibility, broad market potential, and compatibility are supported by this data