

Updated TDD PHY Control State Diagram

November 10, 2025

Ching-Yen Lee, Realtek
Frank Wang, Realtek
Wei Lou, Broadcom

Introduction

- This presentation provides update to the TDD PHY Control state diagram presented in May 2025.
 - Previous presentation: https://ieee802.org/3/dm/public/0525/Baseline_Text_TDD_051125.pdf
- The updated TDD PHY Control state diagram has the following modifications
 - SILENT1, TRAINING2, and COUNTDOWN2 are removed
 - PCS_TEST is inserted between COUNTDOWN1 and PCS_DATA

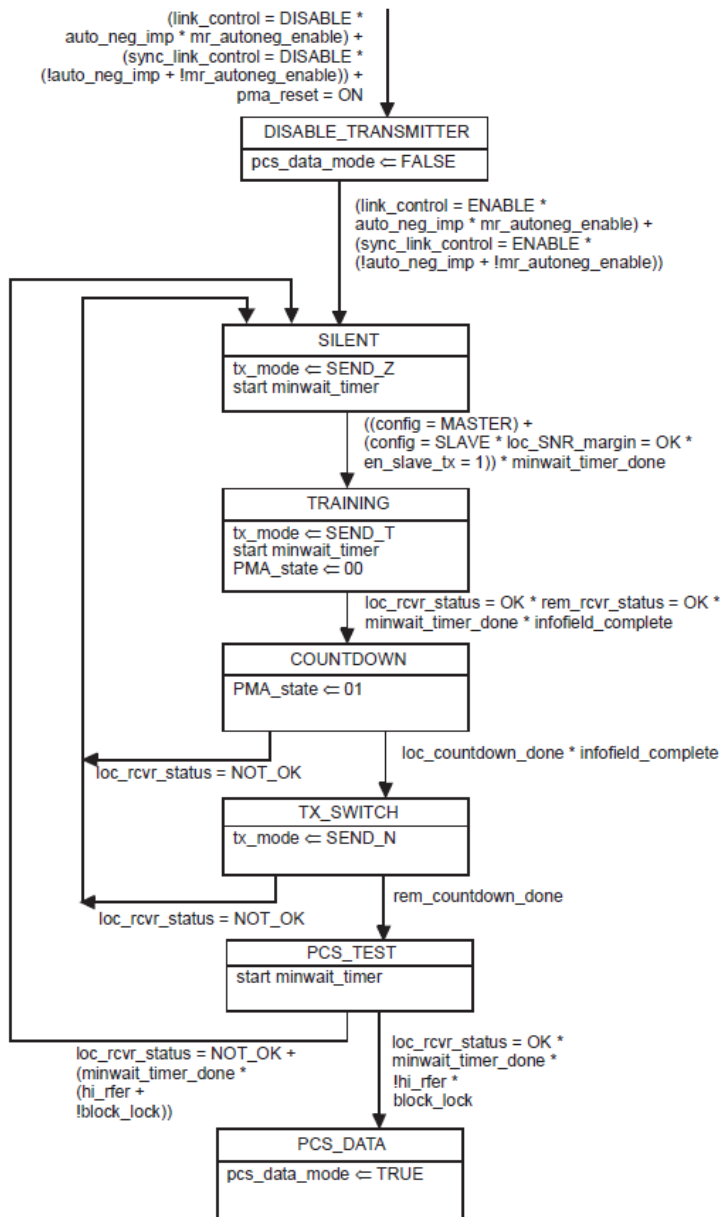
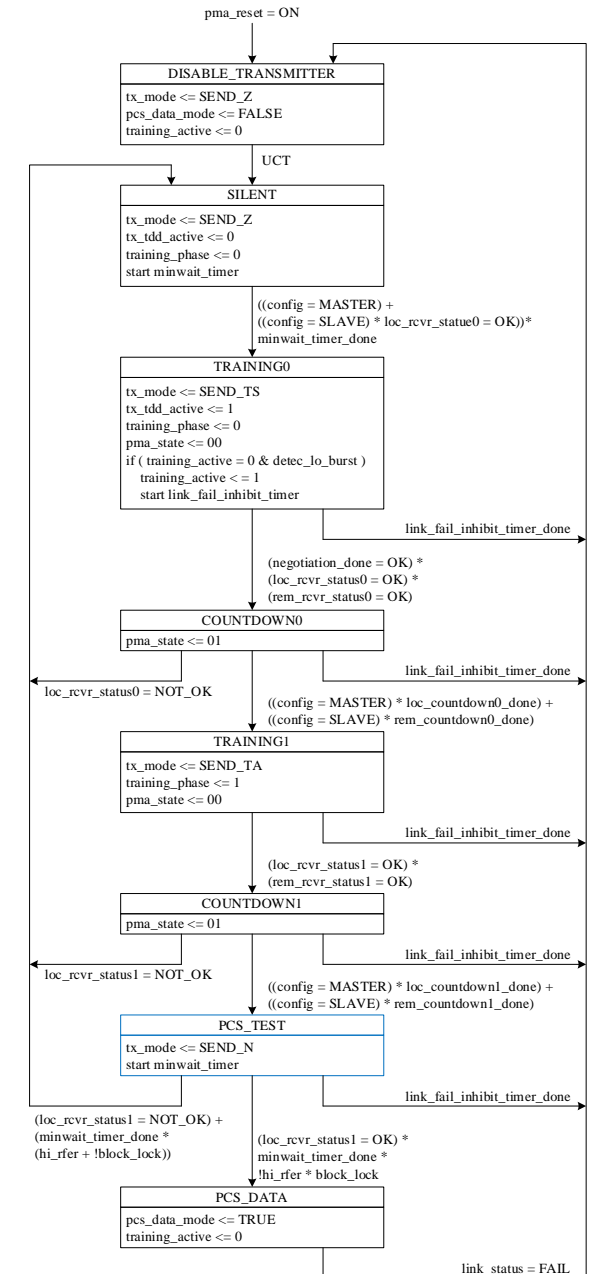


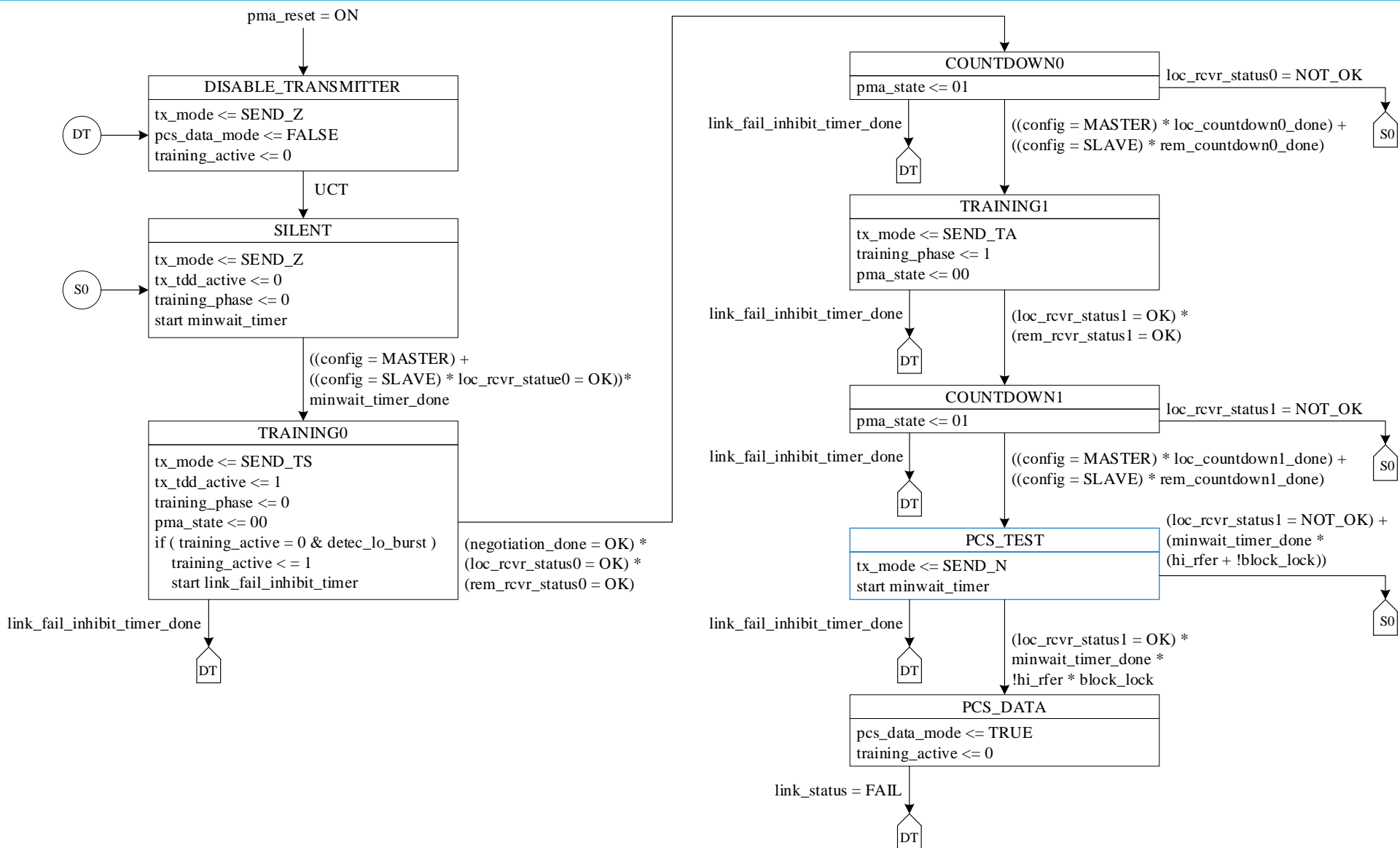
Figure 149-32—PHY Control state diagram

- The left figure is PHY control state diagram for 802.3ch, and the 7 states from top to bottom are: DISABLE_TRANSMITTER, SILENT, TRAINING, COUNTDOWN, TX_SWITCH, PCS_TEST, and PCS_DATA.

- The right figure is updated TDD PHY control state diagram, and the 8 states from top to bottom are: DISABLE_TRANSMITTER, SILENT, TRAINING0, COUNTDOWN0, TRAINING1, COUNTDOWN1, PCS_TEST, and PCS_DATA.



Updated TDD PHY Control State Diagram



THANK YOU!