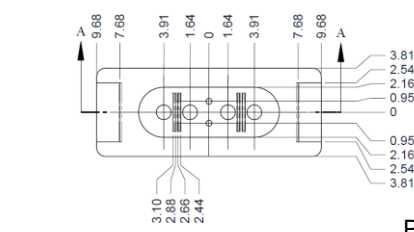
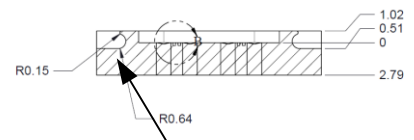


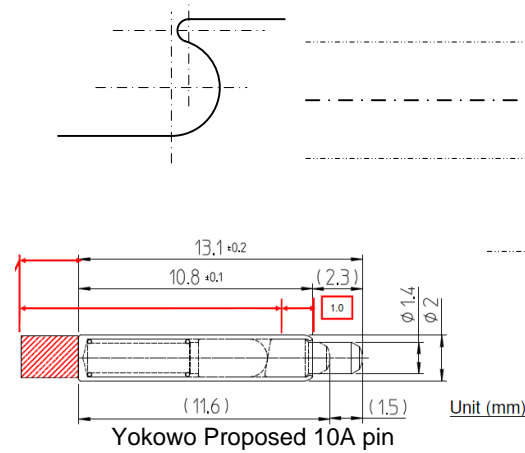
Current draft footprint



SECTION A-A



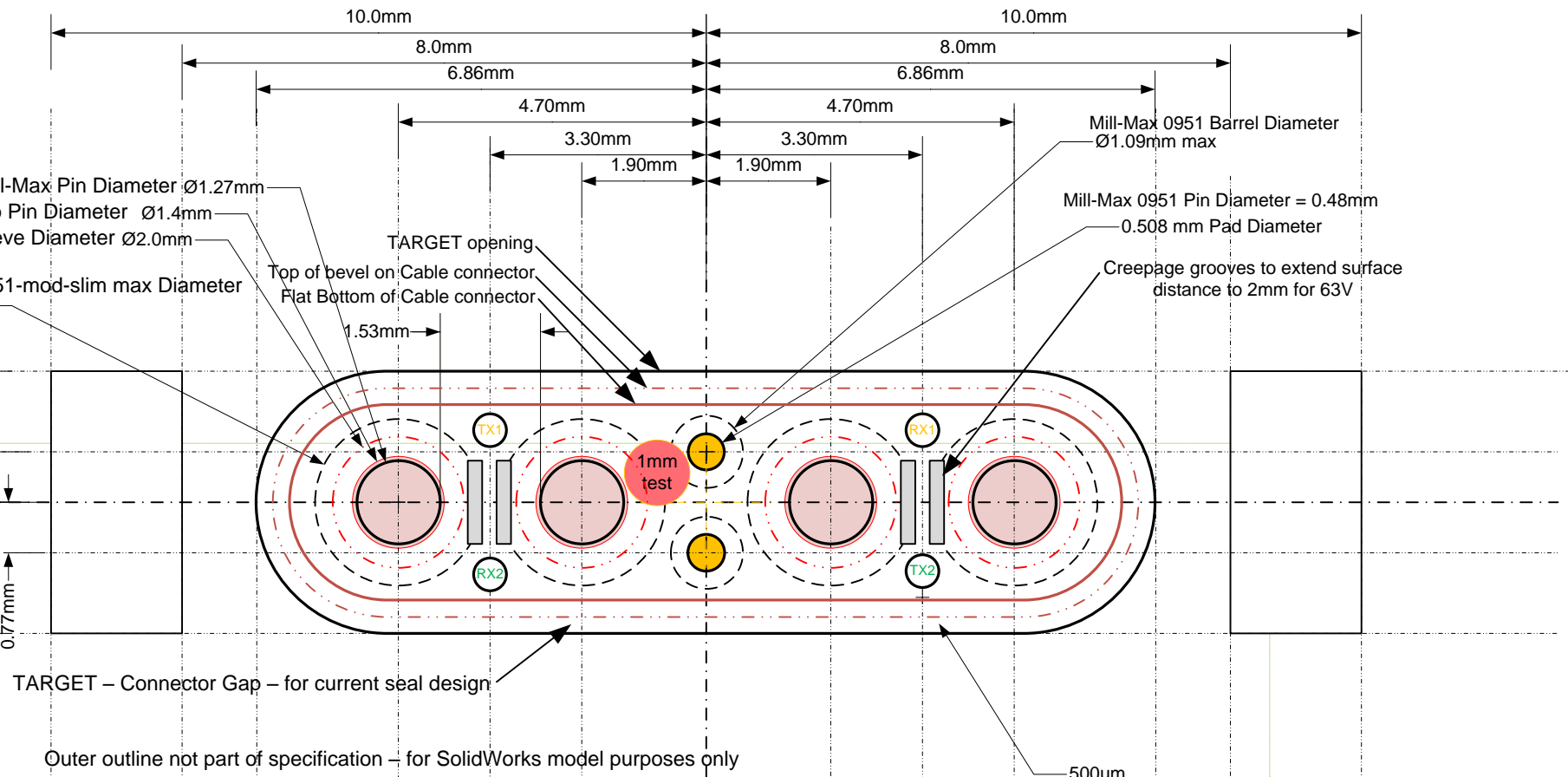
Details Needed



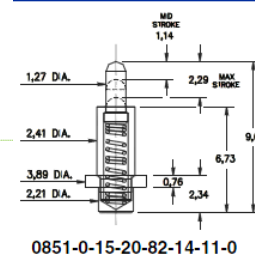
Changes included in this version to allow for new Mill-Max 0851-mod-slim pin

- Move Vneg + 0.25mm to 1.9mm from C/L
- Move Vpos-Vneg to 2.54+0.26 = 2.8mm
- Vpos - C/L = 2.8mm+1.9mm = 4.7mm
- Optical C/L to connector C/L = 1.9 + 1.4 = 3.3mm
- Overall pin dimension length changed is 1.58mm

2mm creepage test

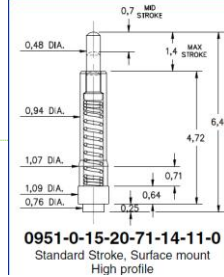


0851



0851-0-15-20-82-14-11-0

0951



0951-0-15-20-71-14-11-0
Standard Stroke, Surface mount
High profile

