

General Notes

Participant Generally Agreeable

Participant Generally Disagreeable

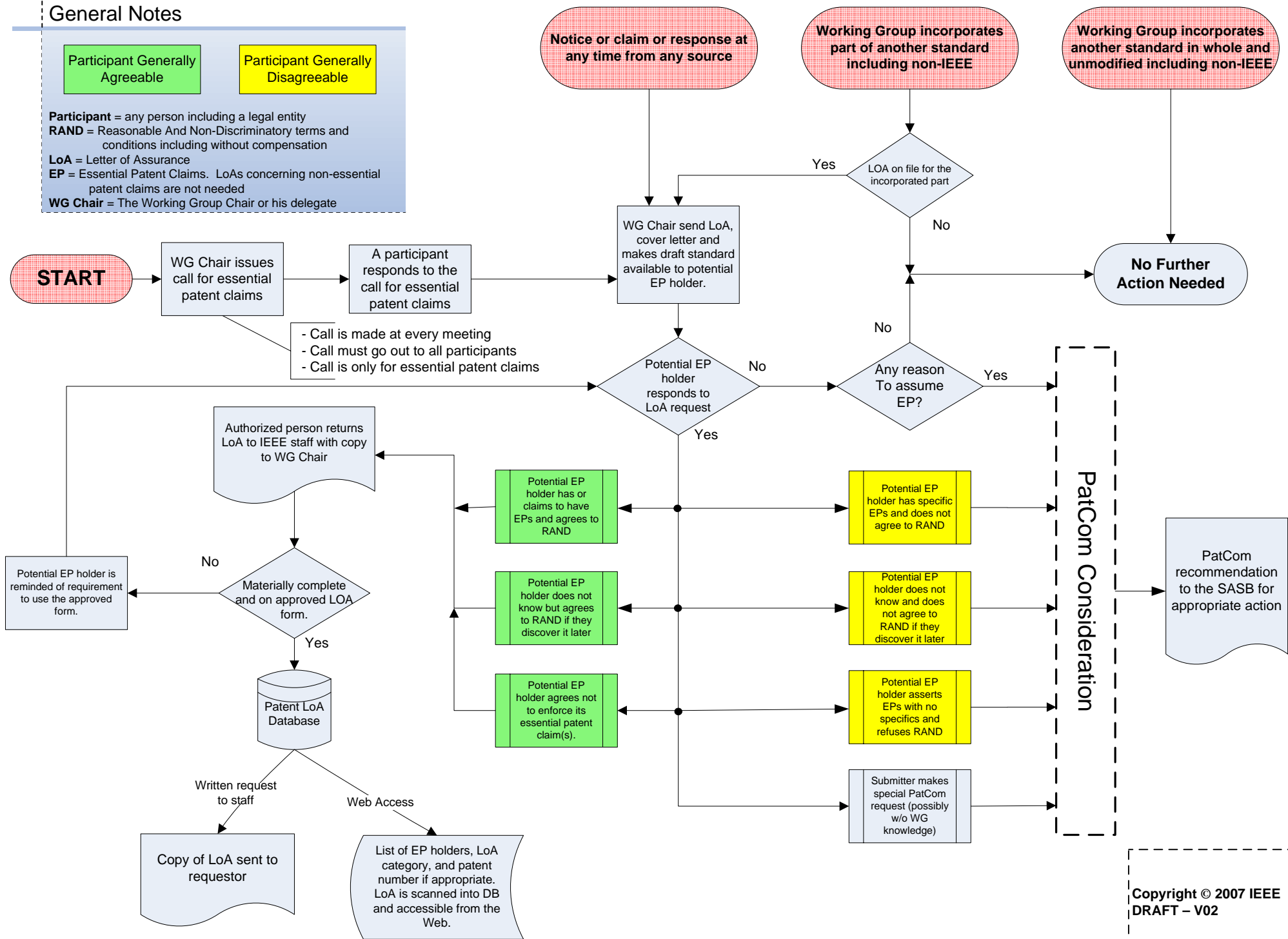
Participant = any person including a legal entity

RAND = Reasonable And Non-Discriminatory terms and conditions including without compensation

LoA = Letter of Assurance

EP = Essential Patent Claims. LoAs concerning non-essential patent claims are not needed

WG Chair = The Working Group Chair or his delegate



Copyright © 2007 IEEE
DRAFT – V02