

IEEE P1564 Voltage Sag Indices Task Force Meeting

2007 IEEE/PES General Meeting
Tampa, Florida
January 7, 2008, 3:00 to 5:00 PM

Chair: Dan Sabin
d.sabin@ieee.org

IEEE P1564 Task Force Meeting

Agenda

- Task Force Overview
- Draft Status
- Review Document

IEEE P1564 Task Force Overview

Status

- Title
 - IEEE Guide for Voltage Sag Indices
- Scope
 - This guide identifies appropriate voltage sag indices and characteristics as well as the methods for calculating them. Methods are provided for quantifying the severity of individual events (single-event characteristics), for quantifying the performance at a specific location (single-site indices), and for quantifying the performance of the whole system (system indices). Multiple methods are presented for each. The methods are appropriate for use in transmission, distribution, and utilization electric power systems.
- Purpose
 - This document identifies and defines different characteristics and indices. It does not recommend the use of a specific set of indices, but instead recommends the method for calculating specific indices when such an index is used. The large variation in customers sensitive to voltage sags and power providers supplying them makes it impossible to prescribe a specific set of indices. Instead this document aims at assisting in the choice of index and ensuring reproducibility of the results after a certain index has been chosen. The user of this document may decide to calculate the value for just one index or for a number of different indices, depending on the application.
- PAR Status
 - In February 2007 the IEEE-SA Standards Board approved the project until December 31, 2011.

IEEE P1564 Draft Work

- Edited by a summer intern working for Russ Ehrlich
- Currently in the process of being “reflowed” into the current IEEE standards template.

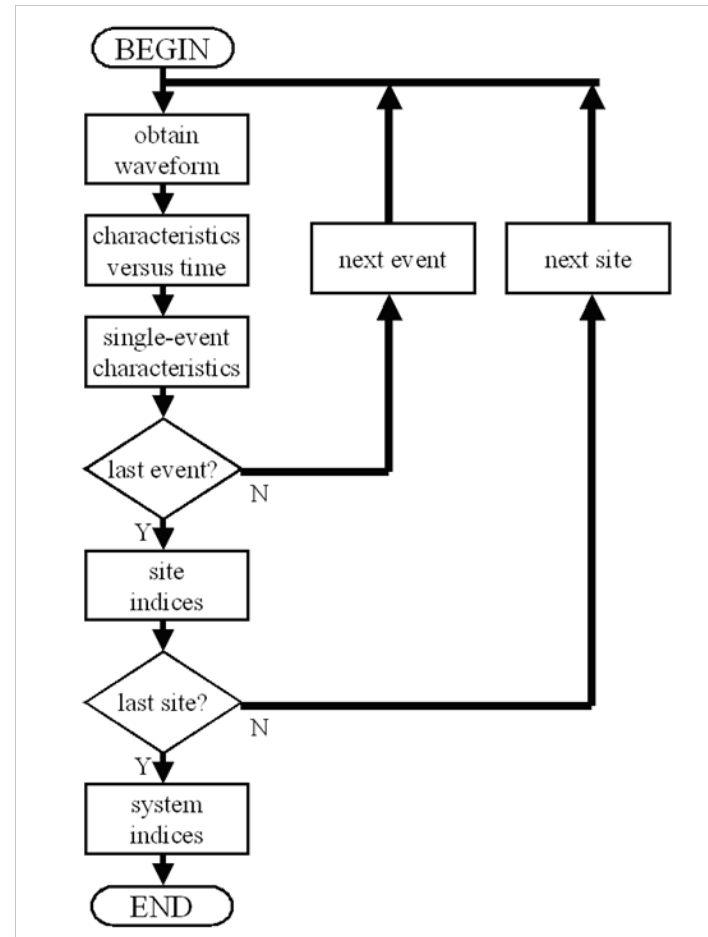
IEEE P1564

Draft Review

- Provides definitions useful for assessing counts, rates, and severity of voltage sags, voltage swells, and interruptions
- Current draft provide coordination with a number of existing and draft standards
 - IEC 61000-2-8
 - Voltage dips and short interruptions on public supply systems with statistical measurement results
 - IEC 61000-4-11
 - Voltage dips, short interruptions and voltage variations immunity tests
 - IEC 61000-4-30
 - Testing and measurement techniques – Power quality measurement methods
 - IEEE Std. 1159-2001
 - IEEE Recommended Practice for Monitoring Electric Power Quality
 - IEEE Std 1366-2003
 - IEEE Guide for Electric Power Distribution Reliability Indices

IEEE P1564 Draft Review

Basic Procedure



IEEE P1564 Draft Review

Single Event Characteristics

- Magnitude-Duration
 - Retained Voltage
 - smallest one-cycle rms voltage (from series of rms values recomputed every half-cycle)
 - Duration
 - Time difference between beginning and end of voltage sag
- Mirrors definitions in IEC 61000-4-30 and IEC 61000-2-8

IEEE P1564 Draft Review

Drawing on IEC 61000-2-8

- Threshold Recommendations
 - Sag Start Time: 90% of reference voltage
 - Interruption Start Time: 10% of reference voltage
 - Sag End Time: 91% of reference voltage

IEEE P1564 Draft Review

More Single Event Characteristics

- Voltage Sag Energy
 - duration of an interruption leading to the same loss of energy for an impedance load as the voltage sag
- Voltage Swell Energy
- Voltage Sag Severity
 - Compares voltage sag magnitude with sensitivity curve such as the SEMI curve or lower ITIC curve

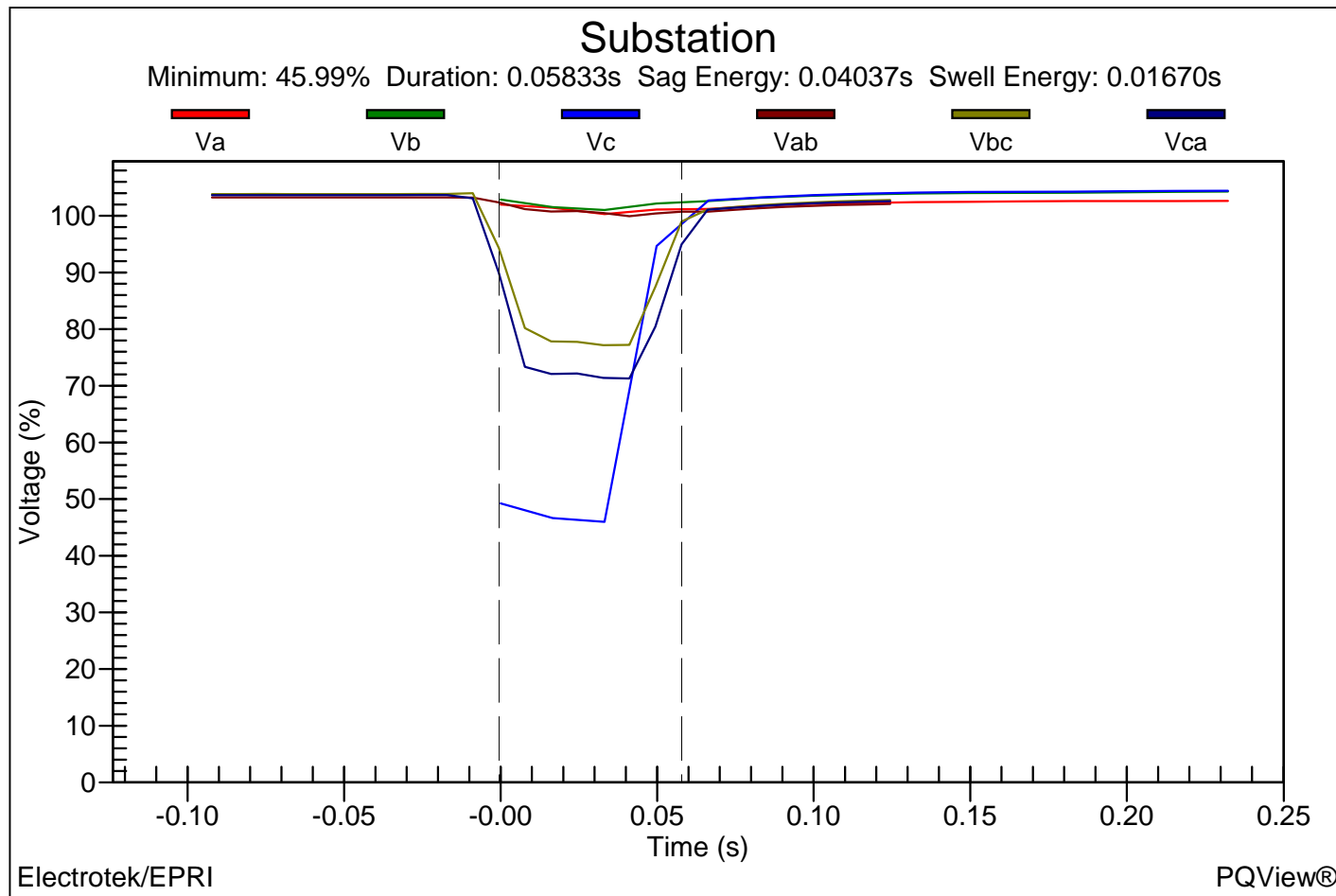
$$E_{vs} = \left[1 - \left(\frac{V}{V_{nom}} \right)^2 \right] \times T$$

$$E_{vs} = \left[\left(\frac{V}{V_{nom}} \right)^2 - 1 \right] \times T$$

$$S_e = \frac{1 - V}{1 - V_{curve}(d)}$$



Example Calculation of Retained Voltage, Duration, Sag Energy, and Swell Energy

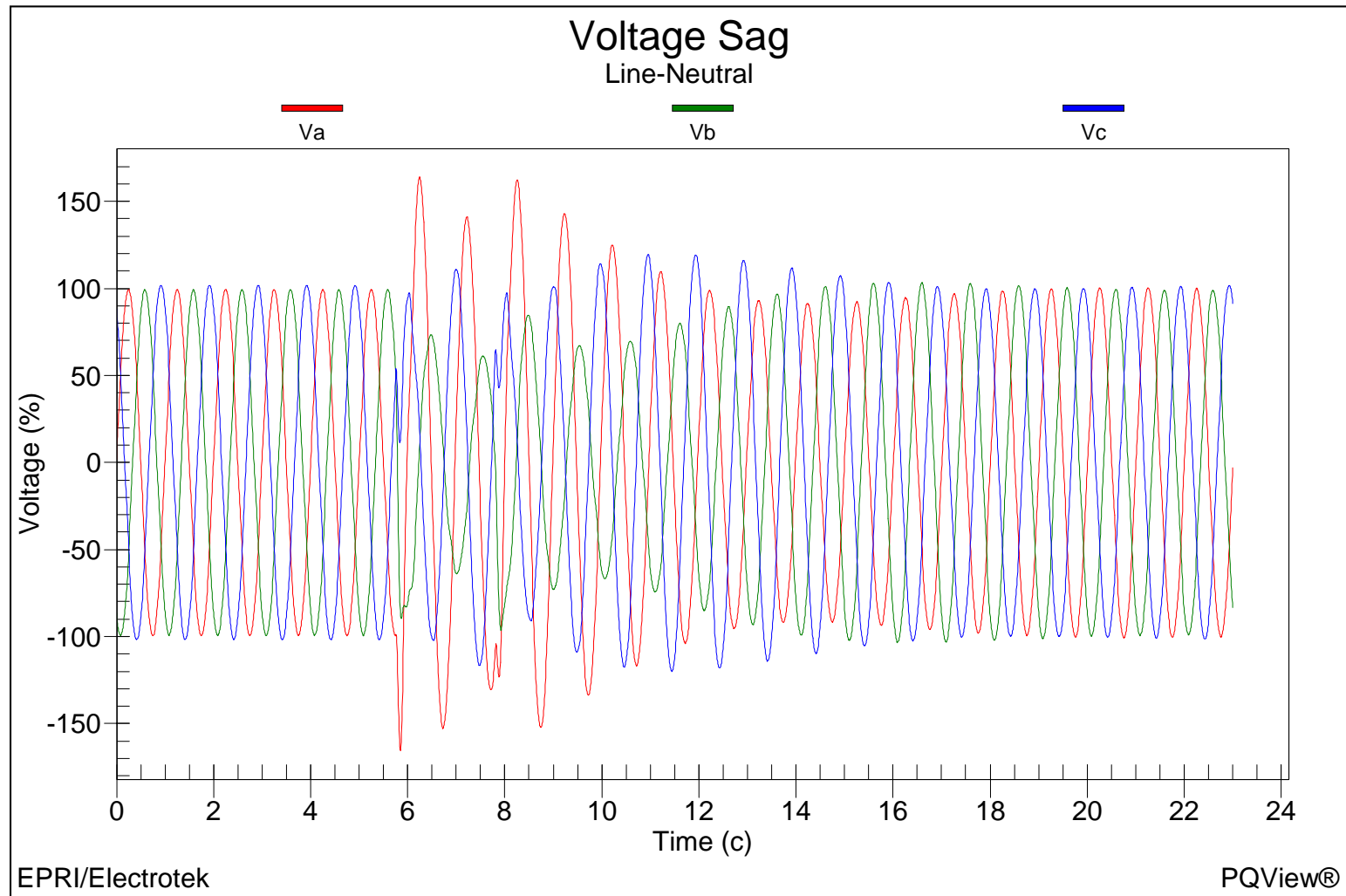


IEEE P1564: Draft Review

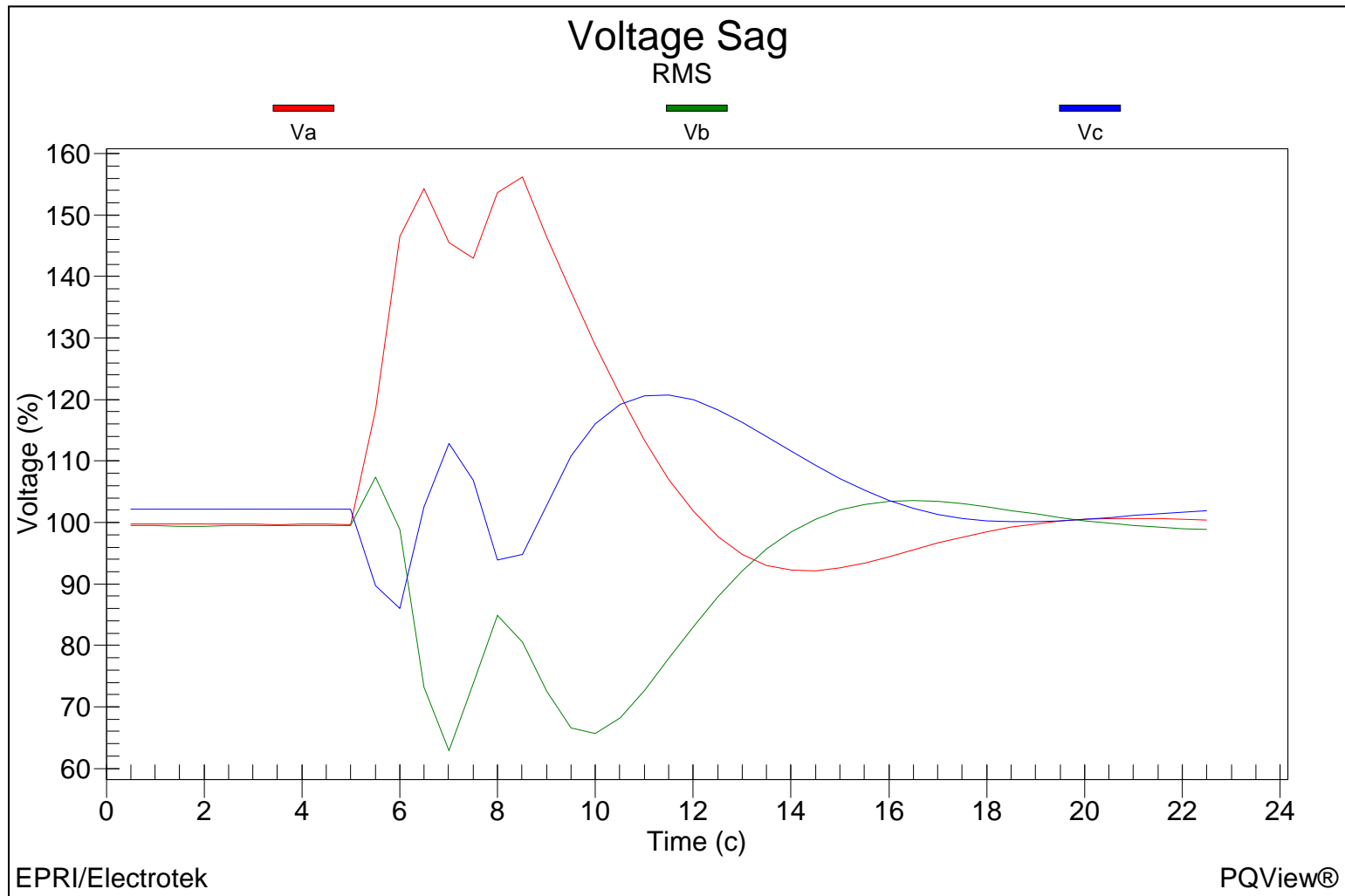
Three-Phase Voltage Aggregation

- Most Common Method: Lowest Line-Neutral or Line-Line RMS Voltage based on meter connection
 - V_A , V_B , or V_C
 - V_{AB} , V_{BC} , or V_{CA}
- P1564 Proposed Alternative: Characteristic Voltage
 - Line-neutral voltages are first “reduced” by subtracting zero-sequence voltage
 - $V_0 = (V_A + V_B + V_C) / 3$
 - Lowest magnitude of the rms voltages computed from the three reduced line-neutral voltage and the three line-line voltages

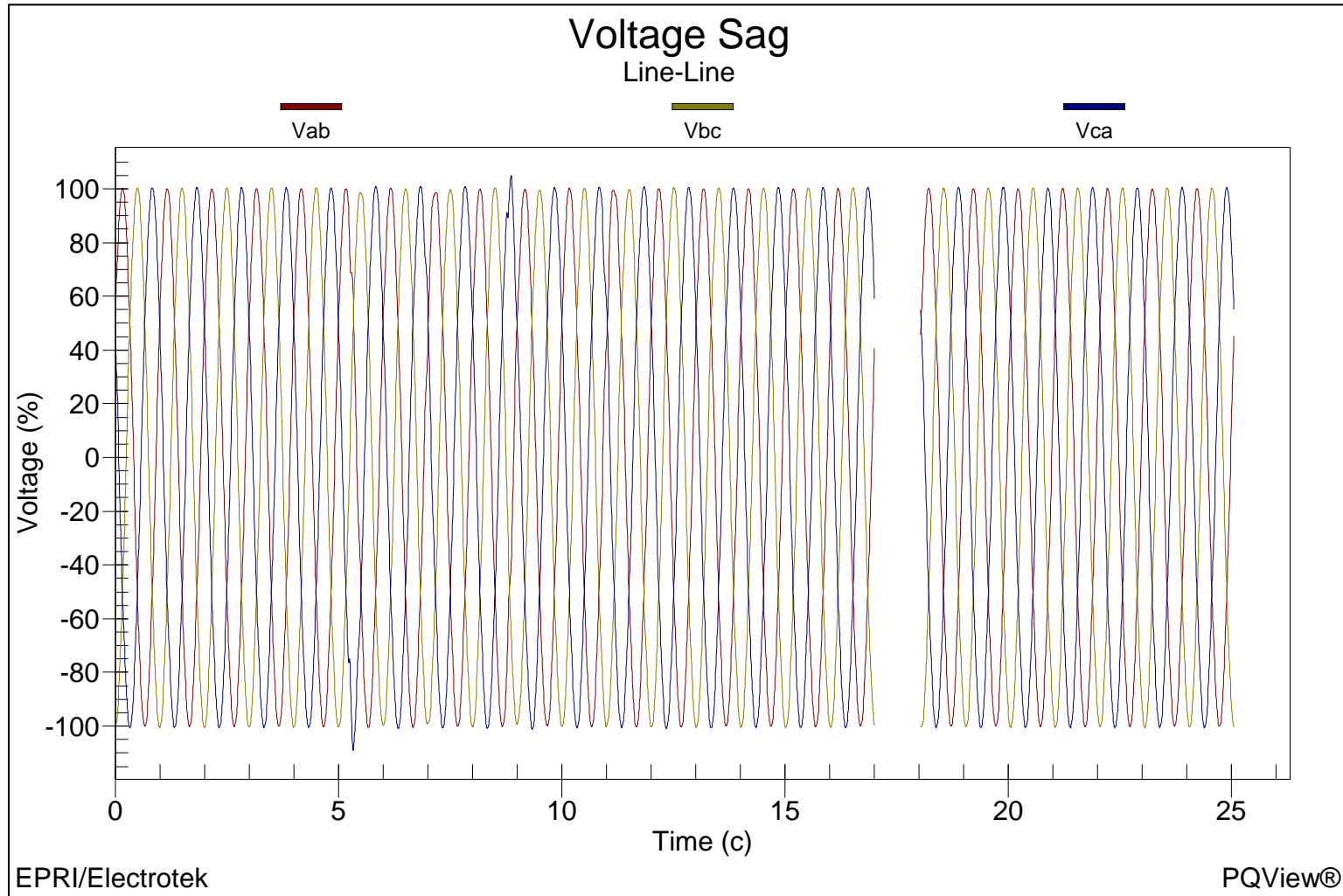
Example Voltage Sag on High-Impedance Grounded System



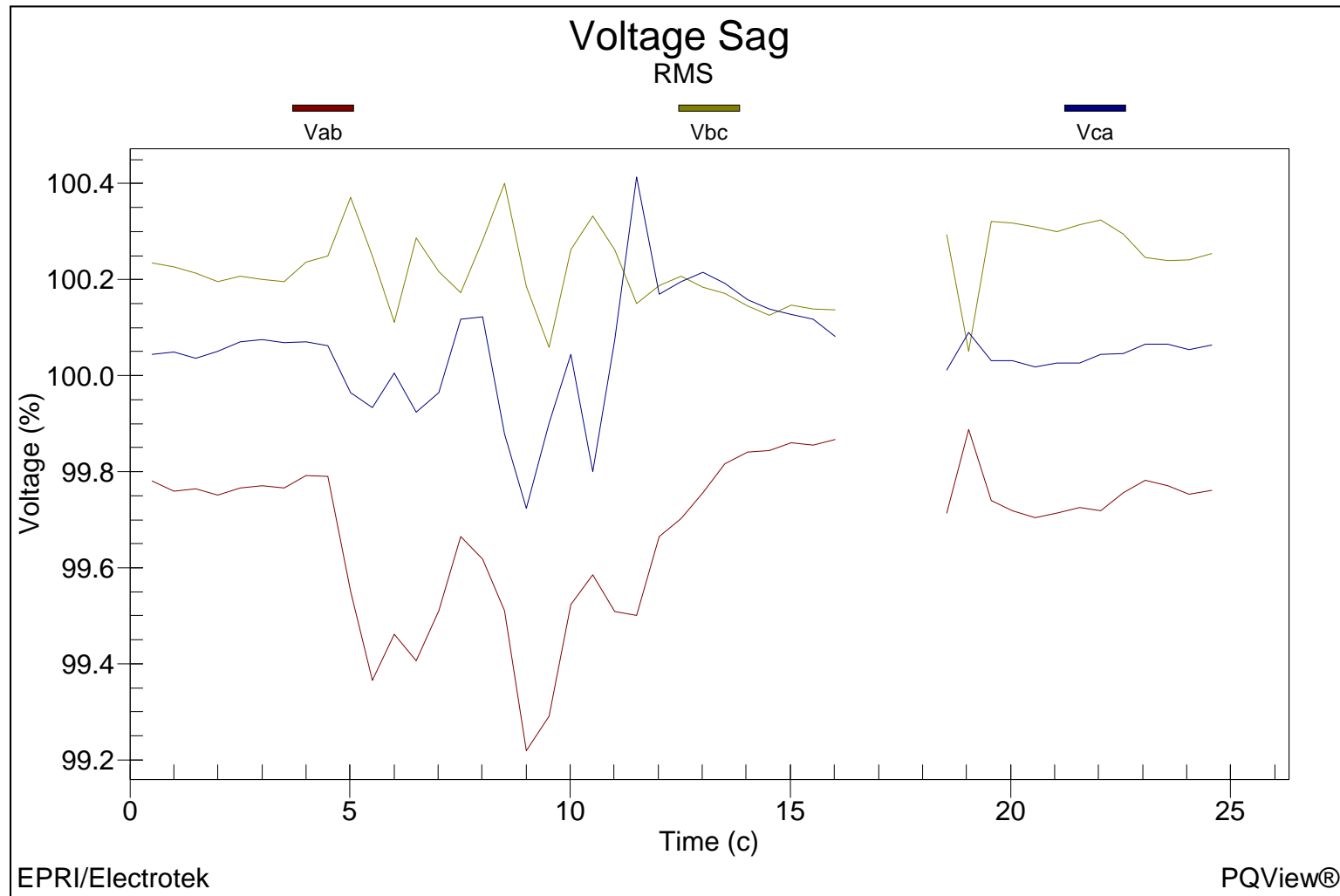
Example Voltage Sag on High-Impedance Grounded System



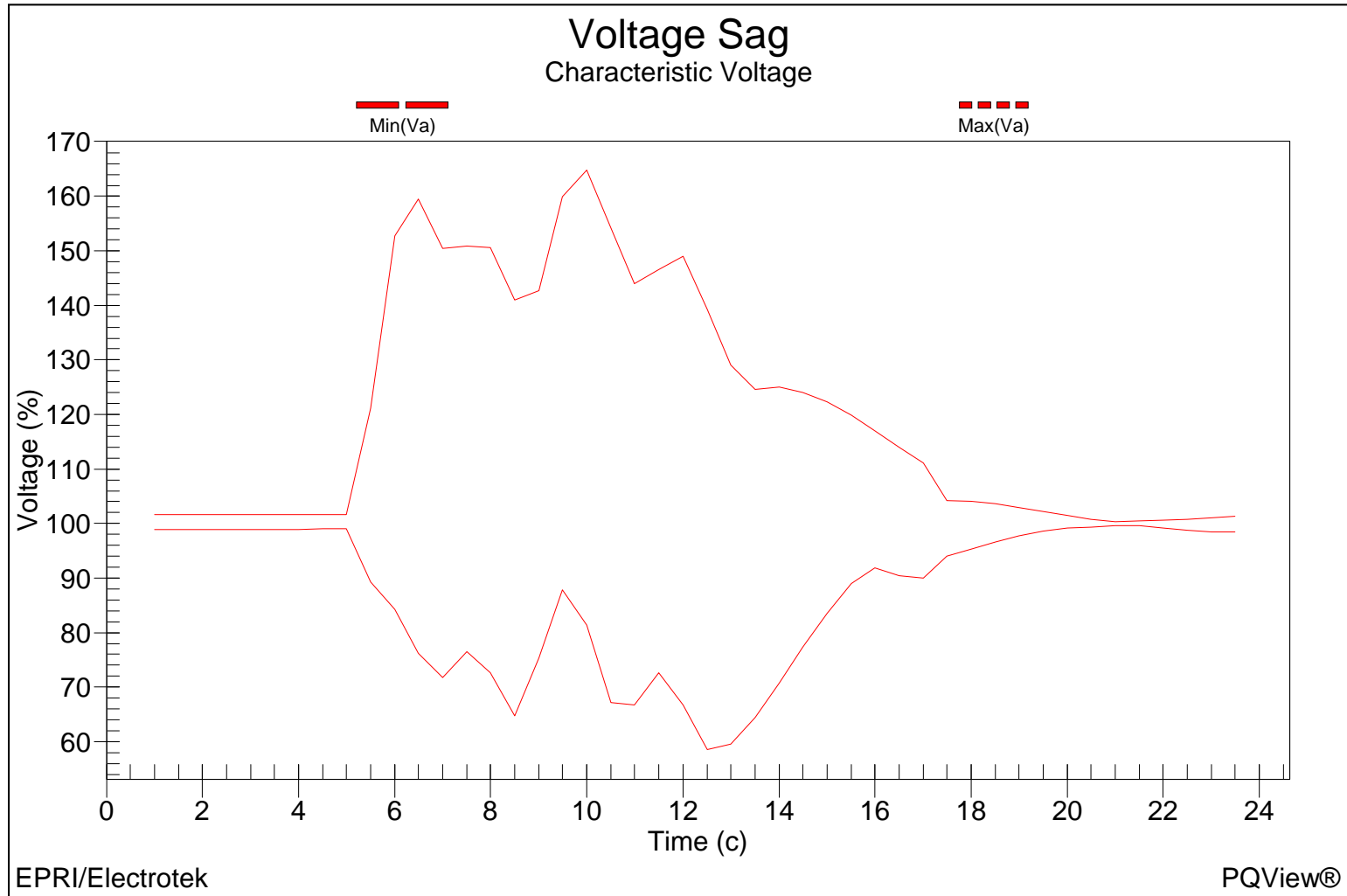
Example Voltage Sag on High-Impedance Grounded System



Example Voltage Sag on High-Impedance Grounded System



Example Voltage Sag on High-Impedance Grounded System



IEEE P1564 Draft Review

Site Indices for SARFI

- System Average RMS Variation Frequency Index
 - SARFI-X
 - **SARFI-90**: Count or rate of voltage sags and interruptions with retained voltage below 90% of voltage reference
 - **SARFI-80**: Count or rate of voltage sags and interruptions with retained voltage below 80% of voltage reference
 - **SARFI-110**: Count or rate of voltage swells with retained voltage above 110% of voltage reference
 - SARFI-Curve
 - **SARFI-ITIC**: Count or rate of voltage sags and interruptions with retained voltage and duration below the lower portion of the ITI (CBEMA) Curve
 - **SARFI-SEMI**: Count or rate of voltage sags and interruptions with retained voltage and duration below the lower portion of the SEMI F47 Curve
- Temporal aggregation recommended to account multiple recordings due to reclosing
- Event rate requires determination of monitor availability

IEEE P1564 Draft Review

Site Indices for Magnitude-Duration

- Voltage Sag Tables
 - Count of rate of retained voltage and duration of voltage sags in to tables
 - UNIPED, IEC 61000-4-11, IEC 61000-2-8
- Temporal aggregation recommended
- Event rate requires determination of monitor availability

	<0.1 s	0.1-0.25 s	0.25-0.5 s	0.5-1 s	1-3 s	3-20 s	20-60 s	1-5 min
80-90%								
70-80%								
60-70%								
50-60%								
40-50%								
30-40%								
20-30%								
10-20%								
<=10%								

IEEE P1564 Draft Review

South African Voltage Sag Table

- NRS-048-2 Sag Reporting Method

retained voltage	Duration t		
	$20 \leq t < 150$ (ms)	$150 \leq t < 600$ (ms)	$0.6 \leq t < 3$ (s)
$90 > U \geq 85$	Y		
$85 > U \geq 80$			
$80 > U \geq 70$			
$70 > U \geq 60$	X1	S	Z1
$60 > U \geq 40$	X2		Z2
$40 > U \geq 0$	T		

IEEE P1564 Draft Review

Site Indices for Sag Energy

- The sag energy method of characterization uses three site indices
 - number of events per site
 - “total lost energy” per site (Sag Energy Index, or SEI)
 - “average lost energy” per event (Average Sag Energy Index, or ASEI)

IEEE P1564 Draft Review

Site Indices for Voltage Sag Severity

- Total Voltage-Sag Severity
- Average Voltage-Sag Severity
- Count of Voltage Sags for the Site

$$S_{SITE} = \sum_{i=1}^N S_{e-i}$$

$$S_{average} = \frac{S_{SITE}}{N}$$

N

IEEE P1564 Draft Review

System Indices

- “System” definition is scalable
 - Could be a collection of customers, feeders, substations, networks, etc.
- System indices are a statistic of a given voltage sag site index from multiple sites
 - Average
 - Percentile
 - CP50: median or 50th percentile
 - CP95: 95th percentile
 - CP99: 99th percentile
 - Weighted Average
 - Number of customers
 - Statistical sampling weight

IEEE P1564 Draft Review

IEEE P1159.1 and P1159.2

- Relevant sections of the inactive P1159.1 and P1159.2 documents need to be incorporated

IEEE P1564 Action Items

Schedule

- Existing document needs to be reformatted to current IEEE template.
 - September 1
- Technical editing needs to be done.
 - November 1
- Task Force Review and Mandatory Editorial Coordination (MEC)
 - November – January
- Address Comments
- Begin Balloting Procedure in Spring 2008?