

## IEEE Technical Tour

March 23, 2023

Dynamic Ratings is pleased to offer a Technical Tour of our facilities to guests from the Milwaukee IEEE Transformers Committee Meeting.

Dynamic Ratings provides condition-based monitoring products and services to the utility industry. Real time data provides better awareness of high voltage electrical equipment, such as transformers, circuit breakers, switchgear, and more. Our top priority is to help utilities successfully deploy and manage their condition monitoring programs to improve the safety and reliability of their assets across the grid. Our purpose is to improve business performance through asset management, provide an exceptional experience with our LIFESTREAM™ support services, and share knowledge, training and resources throughout the monitoring process.

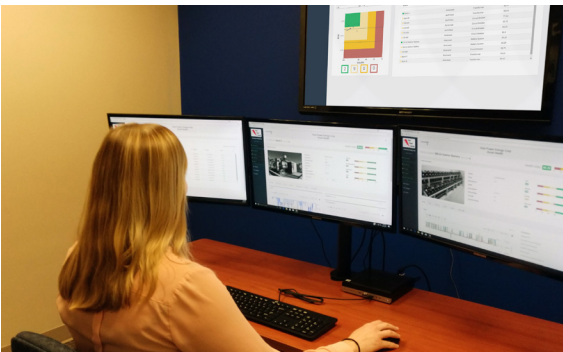


At Dynamic Ratings, you will

1. Understand how Asset Monitoring Systems can be integrated into a new transformer or circuit breaker control cabinet for OEM delivery or easily retrofitted to existing equipment in the field.
2. See the transformer simulator used to train commissioning engineers on installation of asset monitors, dissolved gas analyzers (DGA) and other integrated equipment in the field.
3. Tour the Asset Health Center and see how 24/7 operational support is achieved for utility customers.

**Tour is limited to 25 attendees\***

Please sign up online during meeting registration.



### Itinerary

12:15pm	Board bus at the Hyatt Regency Downtown
12:30	Bus departs
1:00	A true Wisconsin Lunch**
1:30 – 3:00	Facility Tour
3:00	Board the bus
3:30pm	Arrive at Hyatt Regency Downtown

Enjoy a **complimentary** lunch of Saz's Wisconsin Sausage Sampler: grilled bratwursts, andouille and italian sausages, pretzel roll, loaded baked potato salad, fresh fruit, and more.

*\*Dynamic Ratings reserves the right to approve guests prior to the event date, and any required adjustments will be communicated in advance of the visit.*

*\*\*Please indicate any special dietary needs during your registration.*



RESPONSIVE

**ASSET HEALTH SOLUTIONS**