



*MacLean Power Systems cordially invites you to tour our  
Franklin Park, Illinois manufacturing facility.*

*Monday evening, October 26, 2009*

*As part of the Fall 2009  
IEEE/PES Transformers Committee Meeting*

MacLean Power Systems is a leading manufacturer of products used by utilities for building transmission and distribution lines and substations. MPS product families include hardware and connection products as well as insulation and protection products. With global raw material sourcing capabilities, MPS produces over 10,000 items in six domestic production facilities. The MPS business model supports local manufacturing for high service levels, diversity development programs and also sustainability and green initiatives.

The Franklin Park factory tour will include the manufacturing processes for Arresters, Automatic Splices and Pole Line Hardware products. A brief presentation on transformer surge protection and arrester designs will conclude the tour.

#### Tour Schedule

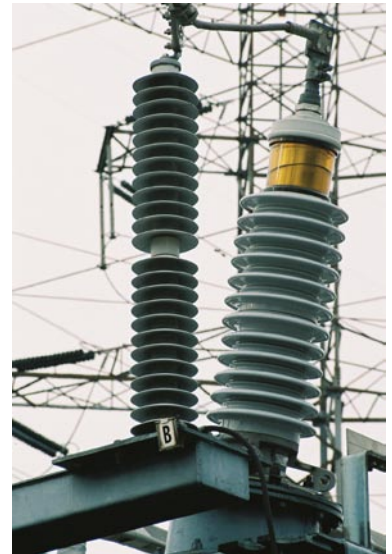
6:30 pm: Bus departs the Westin Hotel  
7:00 pm: Dinner provided at the plant and presentation  
7:30 pm: Plant tour  
9:00 pm: Technical presentation on Surge Protection  
9:30 pm: Depart for the Westin Hotel  
10:00 pm: Arrive back at Westin

Transportation will be provided. Spouses/companions are welcome. Indicate your desire to participate in this tour when you register on-line for the Committee Meeting. Due to the limitations of this tour (only one busload per tour), only Committee Members and Active Participants and their spouses/companions are permitted.

No cameras are allowed on the tour. Please wear your IEEE namebadge during the tour.

To reserve your place in the tour please indicate your desire to attend the tour when you register on-line for the IEEE Committee Meeting.

For more information or questions regarding the tour, contact Paul Lindemulder at [plindemulder@MacLeanPower.com](mailto:plindemulder@MacLeanPower.com) or call 847-451-2813.



**Pre-registration is required – seating is limited**